

A Framework for Fully Integrating Environmental Assessment

Susan M. Cormier · Glenn W. Suter II

Received: 24 August 2007 / Accepted: 20 April 2008 / Published online: 28 May 2008
© The Author(s) 2008

Abstract A new framework for environmental assessment relationships among the various types of assessment process is needed because no existing framework explicitly includes all types of environmental assessments. We propose a framework that focuses on resolving environmental problems by integrating different types of assessments. Four general types of assessments are included: (1) condition assessments to detect chemical, physical, and biological impairments; (2) causal pathway assessments to determine causes and identify their sources; (3) predictive assessments to estimate environmental, economic, and societal risks, and benefits associated with different possible management actions; and (4) outcome assessments to evaluate the results of the decisions of an integrative assessment. The four types of assessments can be neatly arrayed in a two-by-two matrix based on the direction of analysis of causal relationships (rows) and whether the assessment identifies problems or solves them (columns). We suggest that all assessments have a common structure of planning, analysis, and synthesis, thus simplifying terminology and facilitating communication between types of assessments and environmental programs. The linkage between assessments is based on intermediate decisions that initiate another assessment or a final decision signaling the resolution of the problem. The framework is applied to three cases: management of a biologically impaired river, remediation of a contaminated site, and reregistration of pesticide. We believe that this framework clarifies the

Keywords Environmental assessment · Environmental management · Causality · Risk assessment · Ecology · Environmental epidemiology · Eco-epidemiology · Environmental outcome · Introduction · No existing framework explicitly includes all types of environmental assessments. Other frameworks have integrated biological and human health risk assessments, but not risk assessments with other types of environmental assessments (Suter and others 2003; WHO 2001). This lack of integration is a problem, because practitioners of various approaches to environmental assessment may not see how they are conceptually linked. Lack of integration weakens or interrupts the process thus jeopardizing environmental outcomes. For example, assessors of environmental condition based on monitoring often disparage risk assessment as simplistic and unrealistic (Karr and Chu 1999), while some risk assessors complain that monitoring-based assessments do not provide support for risk-based decision making (Suter 2001). And yet, they share an objective: to provide scientific input for decision making. Both issues can be satisfied with an integrated framework that facilitates collaboration among assessors.

S. M. Cormier (✉) · G. W. Suter II
National Center for Environmental Assessment, United States
Environmental Protection Agency, MS-A130, 26 West Martin
Luther King Jr. Drive, Cincinnati, OH 45268, USA
e-mail: cormier.susan@epa.gov

The need for multiple types of environmental assessments is not always recognized or accepted. In particular most frameworks for environmental risk assessment treat epidemiological assessments as just "retrospective risk assessments" (Presidential/Congressional Commission on USEPA 1998). However, it is nonsensical to speak of the risk of an event in the past; either a thing happened or it did not

(Fairbrother and others 1997). Further, risk assessment frameworks show management decisions coming out of risk assessments without an intervening management assessment to integrate risks with costs, benefits, preferences, or legal constraints. Risk assessors are not the only ones guilty of *sumus hubris*. Epidemiology texts present examples of management decisions made from epidemiological results without considering risks or costs from the alternative actions.

A fully integrated framework could create a common set of concepts, tools, and terminology where none currently exists. A more universal, integrated framework may make it easier to perform assessments and for executives, legislators, judiciary, and stakeholders to understand the reasoning of the assessments.

Finally, none of the existing frameworks for environmental risk assessment is focused on making decisions to resolve the problem. For example, the Presidential/Congressional Commission (1997) created a framework that is centered on stakeholder involvement rather than decision making and is in the form of an infinite loop.

In this article, we describe the four types of assessment and explain how they are organized into an integrated environmental assessment framework. We explain a common assessment process that is the basis for all types of assessments. We illustrate the framework with examples of assessment for management of water quality, contaminated sites, and pesticides. Perhaps, this general framework at the common assessment process can make it easier for decision makers and stakeholders to cope with a variety of related environmental programs.

Framework for Environmental Assessment

Frameworks for processes typically consist of a flow diagram and text explaining how to perform the process by implementing the diagram. A framework provides guidance on how to implement the process and indicates what tasks need to be performed and in what order. It provides common terminology and understanding of the process for practitioners and a basis for judging the adequacy of a particular implementation of the process.

Columns

The integrated environmental framework is organized as a two-by-two matrix of assessments (Figs 1 and 2). The columns consist of processes for detecting or solving problems.

Problem Detection

The assessments use the results of environmental monitoring to determine whether the environment is impaired

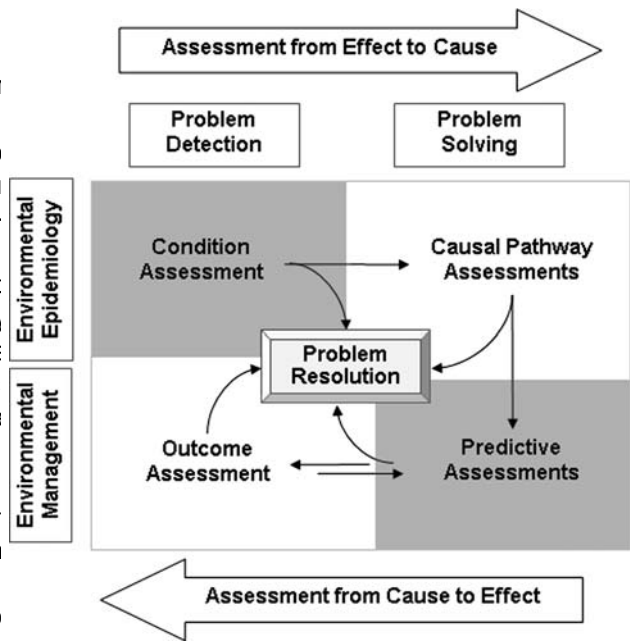


Fig. 1 Environmental assessment framework. The environmental assessment process is depicted as a matrix of assessments that address problem detection (left column) and problem solving (right column). Problem detection assessments feed into problem solving. Problem solving assessments lead to resolutions. The rows of the matrix are based on the direction of the analysis: eco-epidemiological assessments assess from effect to cause (top row) while environmental management assessments assess from cause to effect (bottom row). All assessment can potentially lead to a resolution of an environmental problem and an end to an assessment process.

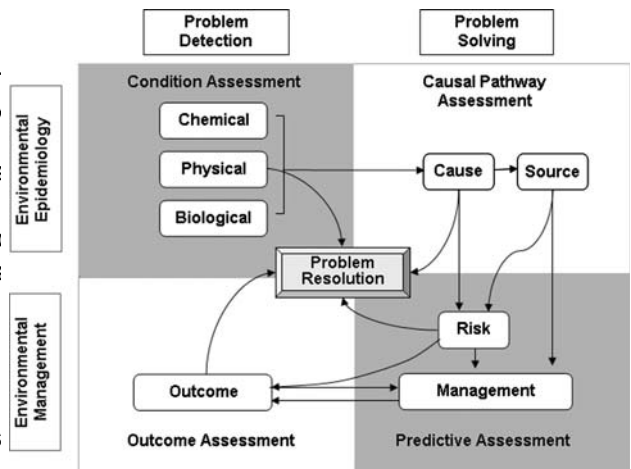


Fig. 2 Elaboration of the framework presented in Fig. 1. Condition assessments may evaluate chemical, physical, or biological conditions. Causal pathway assessments can deal with proximate causes or their sources. Predictive assessments evaluate the risks from alternative actions and the social and economic advantages and disadvantages of management options. Outcome assessments evaluate whether management actions achieve environmental goals

due to any cause (condition assessment) or is impaired due to a failed management action (outcome assessment).

Problem Solving

The assessments determine causes (causal pathway assessments) and evaluate solutions to environmental problems (predictive assessments).

Rows

The rows are formed by the practices of environmental epidemiology and environmental management. They distinguish the two basic activities of explaining what has happened and informing what should happen.

Environmental Epidemiology

The assessments in this row use epidemiological approaches to determine whether an ecosystem or its constituent organisms (including humans) are impaired (condition assessment) and the causes and sources of those impairments (causal pathway assessment). Environmental epidemiology deals with the determination of the incidence, distribution, and causes of injury and disease in human and nonhuman populations and communities. In sum, it characterizes existing environmental conditions and their causes. Hence, the assessor begins with observed effects and makes inferences about causes.

Environmental Management

The predictive assessments in this row estimate the consequences of alternative management actions (risk assessment), and the relative desirability of those actions based on those environmental risks, plus benefits, costs, stakeholder preferences, legal constraints, and other considerations (management assessment). After an action is selected and implemented, outcome assessments determine the performance of the action taken to remediate the cause and its effectiveness in resolving the problem. In sum, this row characterizes possible future environments that may result from alternative management actions and then evaluates the actual outcomes.

Condition Assessment: Problem Detection by Environmental Epidemiology

Condition assessments analyze monitoring data to determine whether environmental goals are being achieved that protect human health and ecosystems. Assessments of physical, chemical, and biological conditions may be performed independently or together. For ecological assessments, this involves comparing attributes of a population, community,

ecosystem to those that would be expected given the ecosystem type and location (Suter and others 1987). For human health, epidemiological statistics are used to determine whether the frequency of diseases or disabilities is higher than expected, given the demographics of a population (Friis and Seller 2003). If standards exist for a chemical or other agent, a condition assessment may simply determine whether the relevant standard is violated.

Some cases such as mass mortalities of fish are clearly outside the bounds of normality. Such cases require minimal condition assessments. For example, one may simply report the number, size, and species of fish involved and gather samples and data for the causal assessment. Condition assessments can prompt causal assessments, which lead to risk assessments as shown in the framework (Fig. 2). However, if the impaired condition is identified as contamination (e.g., a standard is exceeded or an oil spill has occurred), a causal assessment may be unnecessary. In addition, condition assessments may provide paired biological, physical, or chemical data for generating risk models (Fig. 2). For site-specific assessments (Example 1) including contaminated sites (Example 2), data from condition assessments can provide a basis for estimating from current conditions the risks that will continue if no remedial action is taken. For assessments such as pesticide reregistration (Example 3), condition assessments can provide exposure-response relationships that contribute to assessments of alternative regulatory decisions.

Causal Pathway Assessments: Beginning Problem Solving by Environmental Epidemiology

Causal pathway assessments determine the probable causes of the environmental impairments revealed by condition assessments. They consider the proximate cause, the source, and the causal pathways that connect them. It is not always necessary to perform both causal and source assessments. In many cases, identification of the cause also serves to identify the source. If the cause of wildlife mortality is oil and a grounded tanker is spilling oil, the source is self-evident. If impairment is defined by exceedence of a standard, then the cause need not be identified, but the source must be found. Management actions are usually more effective if they remove the source or interrupt events leading to the cause, rather than attempting to remove the proximate cause. Therefore, both the cause and the source of the cause usually must be determined before management actions can be defined.

Causal Assessment

This type of causal pathway assessment identifies the proximate cause, the causal agent that directly induces the

biological effect of concern. This is necessary because Risk assessments may be initiated in various ways. They specify effects often have multiple possible causes. For example, insufficient dissolved oxygen is a proximate cause of fish mortality, but so are chemical contamination and heat stress. Ecologists have adapted and modified epidemiological criteria to consistently evaluate the diverse types of organisms, there are no prior environmental assessments; the registration process is the initiator. Risk assessments may also address existing agents for which there is no epidemiological evidence such as most small production volume chemicals or most hazardous waste sites. They may include assessments of risks from proposed activities such as the risk of extirpation of a fish population from alternative fishery management plans or risks of biodiversity loss from alternative conservation plans (Burgman 2005).

Source Assessment

These identify and characterize the sources leading to exposure by the causal agents. If there are multiple sources, it apportions exposures among those sources. Some cases are simple; the source of an uncommon aqueous pollutant may be found by examining emission data from permitted upstream sources. More difficult cases involve trace substances, chemical or biological analyses, or modeling. Examples include isotope analyses to determine the source of lead (Finkelstein and others 2003, Scheuhammer and Templeton 1998) and nitrogen (deBruyn and others 2003), use of chemical fingerprinting to identify the sources of PAH mixtures (Mahler and others 2005, Menzie and others 2002), and DNA analyses to identify sources of pathogens (Simpson and others 2002). Because source assessments often support decisions of legal liability, the practice is often referred to as environmental forensics (Murphy and Morrison 2002).

Predictive Assessment: the Bases for Problem Solving by Environmental Management

Predictive assessments estimate changes that will occur under alternative actions to resolve the environmental problem. They include risk assessments and management assessments. Risk assessments estimate effects due to exposures and changes in effects due to management actions that change exposures. Management assessments predict the acceptability of actions by evaluating the risks in light of social, economic, and legal considerations.

Risk Assessment

These are the basis for risk-based management. Risk assessments estimate the potential adverse and beneficial effects of different exposures resulting from alternative management actions, including no action. Management options may include a combination of regulations, economic incentives, engineered controls, social and educational activities, and other approaches that are evaluated for their ability to reduce exposure to acceptable levels. In some contexts, assessments that predict effects of alternative actions are called environmental impact assessments.

Management Assessment

These integrate the environmental risks and benefits of alternative actions with stakeholder preferences, economic costs, regulatory requirements, legal considerations, and many other factors in the decision process. By balancing multiple goals, management assessments may provide a basis for making decisions that are likely to be successfully implemented. However, in many cases, such as new chemicals, the output of the risk assessment is usually sufficient to inform the decision. For example, if a chemical has large risks (e.g., a cancer risk greater than one in ten thousand), it will be prohibited; but if it has very small health and ecological risks, it is likely to be permitted. A formal management assessment is needed when the management decision itself is complex, because the acceptability of risks is unclear, the risks and benefits are numerous or heterogeneous, the decision is controversial, or the success of a management action depends on its political or social acceptance (SAB 2000). Management assessment implies an integrated analysis and synthesis of decision criteria rather than simply ensuring that the decision maker receives input from all relevant disciplines. Final recommendations may balance

risks against costs or utilities. For example, risks from the decrease in exposure or effects compared with the goal wastes may be balanced against risks from the remedial actions. This may be done qualitatively (e.g., using a checklist of considerations) or by quantitative methods such as net benefit analysis, cost-benefit analysis, and multi-attribute decision analysis (Efron and Tibshirani 1993; Linkov and Sargent 2006). Management assessments may result in a list of actions that are satisfactory, a ranking of alternative actions, or an optimum management action. Formal management assessments are relatively rare, because decision makers often prefer their own subjective processes for integrating input to the decision, but a subjective process is less transparent, less reproducible, and potentially less defensible.

Outcome Assessment: Problem Detection After Environmental Management Actions

Outcome assessments evaluate the success of a management action in achieving environmental goals. Whereas risk and management assessments predict the likely performance of different actions, outcome assessments estimate and measure the actual performance and effectiveness of management actions in the environment. Outcome assessments may be performed in stages. First, performance assessments evaluate if the action reduced the restricted the level of the causative agent as predicted by the risk and management assessments. Second, effectiveness assessments evaluate if the action resulted in an environmental condition that is acceptable and thus resolves the environmental problem. Ideally, both performance and effectiveness assessments are included in outcome assessment and inform management actions or indicate that the problem is resolved. However, some effects take decades or centuries to recover, precluding a timely assessment of effectiveness. Other effects, such as most human health effects, are too rare to measure. In these causes, performance alone may be used to decide if the action was sufficient to resolve the problem.

Like a condition assessment, actual measurements must be made in outcome assessments; they cannot be formed by modeling alone. The post-action condition is compared with the prior condition and with reference conditions. For Superfund, the outcome assessment compares the site meets the requirements of the record of decision (ROD). For outcome assessments involving aquatic life, an increase in the presence or abundance of an assemblage of target species may signal that biocriteria have been met. For human health, a decrease in exposure of the population signals that appropriate action was taken. The magnitude of

The individual assessments in this framework all share a common process composed of three activities: planning, analysis, and synthesis (Fig. 3). In addition, all assessments are initiated by an environmental problem, stakeholder demands, a legal mandate, or a prior assessment and they end with a decision concerning further assessments or management actions. The initiation and decision are not part of the assessment; rather these activities provide the impetus, link different assessments, or resolve the problem. The correspondence of this common process to risk assessment frameworks should be obvious. Therefore, we illustrate the generality of the common process by mapping the SEPA CADDIS Website (epa.gov/caddis) (Fig. 4) and the kinds of questions they attempt to answer are very different. Condition assessments ask, ““Is there a problem?”” Causal pathway assessments ask, ““What caused the problem?”” Predictive assessments ask, ““What will be the consequences of addressing the problem?”” Outcome assessments ask, ““Did the solution work?””

An assessment may be initiated directly by a law, regulation, policy, or other demand by society. Alternatively, it may be initiated by a prior assessment which was itself initiated by a law, regulation, or policy or societal initiative. For example, Section 303b of the Clean Water Act requires that the states, tribes, and territories report to the U.S. Congress the condition of waterbodies and the causes of their impairments. That requirement initiates condition assessments which may initiate causal pathway assessments (see the Middle Cuyahoga River case). The CADDIS stressor identification process is initiated by a detected or suspected biological impairment and the regulatory drivers include the U.S. Clean Water Act,

Fig. 3 A common assessment process (bottom right of pg.). Each type of assessment has three stages: planning, analysis, and synthesis (grey oblongs) and may be applied to any of the assessments in the framework. An assessment is initiated by a need or mandate (triangle). An assessment leads to a decision (pentagon). Practitioners of ecological risk assessment may recognize the three stages as problem formulation, risk analysis, and risk characterization, but note that all types of assessments share the same common process

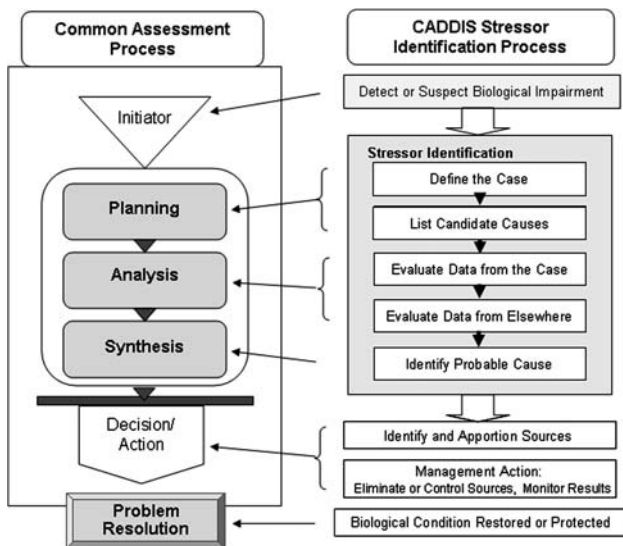
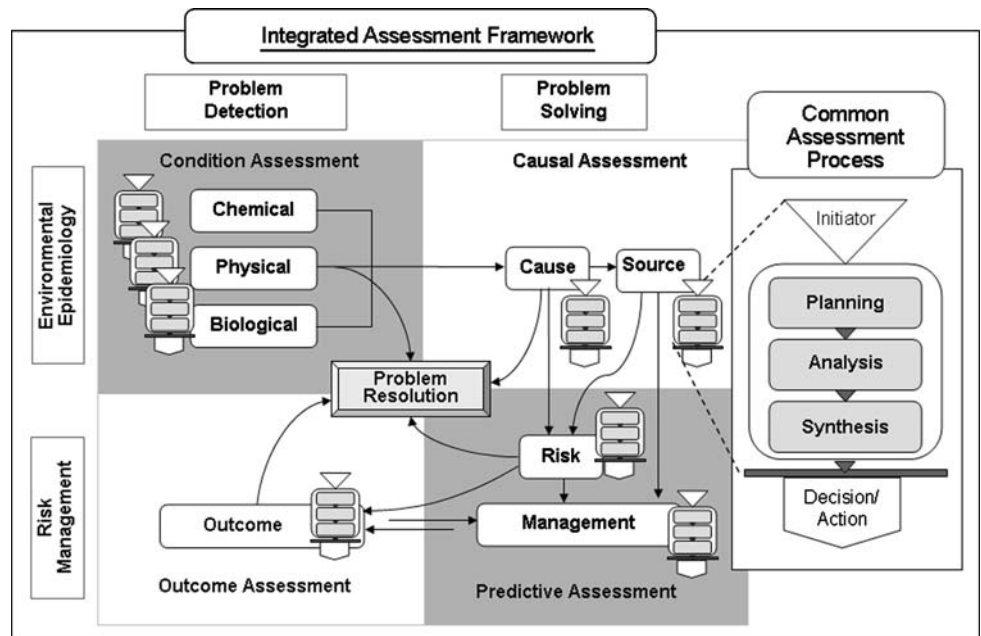


Fig. 4 A cross-mapping between the common assessment process and the CADDIS Stressor Identification process

CERCLA, and others (Fig4). Risk assessment of an existing pesticide may be initiated directly by a requirement for periodic reassessment or by results of condition and causal assessments, such as reports of wildlife mortality and pathology assessments (see the carbofuran case)

Planning

Assessors begin an assessment by determining the decision maker's goals and constraints on the assessment. Planning is primarily devoted to ensuring that the data collection and analysis will support the assessment and that the assessment

will inform the environmental management decision. However, assessors should also plan for the use of good science and for the integration of environmental assessment with other input to the decision such as societal preferences, engineering feasibility, and other inputs to the decision. The plan for each assessment and for the integration of assessments must be mindful that the entire assessment process will usually consist of multiple assessments that must be linked to resolve an environmental problem.

Also during planning, information about hazardous agents, ecological and human health conditions, and the context of the assessment is assembled. Then measurements to be performed and models to be developed are selected that will allow assessors to estimate what has happened, is happening, or may happen in the environment. The measurements and models are described in an analysis plan. The plan must be capable of generating the cause-effect relationships that will be used to identify causes or forecast and measure outcomes.

Planning narrows the focus to tractable issues and goals and information needed for the assessment. Unnecessarily elaborate assessments waste resources, so fewer problems can be addressed. There must be a balance between acceptable uncertainty and the desire to resolve the problem. Therefore, the assessors should know the bases for the decision and the decision maker's willingness to act under uncertainty. This may be accomplished using a formal process such as the data quality objectives process (USEPA 1994). The decision maker's needs may be modest. It may be sufficient to conclude that the consequences of inaction will be unacceptable, that one plan of action is clearly better than the others, and that a desired improvement is expected to be apparent and measurable within a certain

Table 1 Comparison of the activities performed in different phases of different types of assessments

	Planning	Analysis	Synthesis	Decisions
Condition	Defines the scope of the assessment (what, where, and when) and plans the analysis	Characterizes the conditions in the case being assessed and the acceptable or natural range of possible conditions	Compares the condition observed in the study to standards, reference, or background levels and determines whether impairment is occurring	Declare the system unimpaired and end the process Identify an impairment <ul style="list-style-type: none"> Continue monitoring
Causal pathway				
Causal	Develops a list of candidate causes and plans the analysis to determine the probable causes	Develops the evidence to evaluate each possible cause, primarily by defining associations between the effects and the possible causes	Compares evidence among possible causes and identifies probable causes	Identify a probable cause for further assessment <ul style="list-style-type: none"> Determine that the cause is not appropriate for further assessment (e.g., the impairment is due to a drought) Gather more data and repeat the causal analysis because evidence was unclear or insufficient
Source	Identifies potential sources and their distributions and then plans the analysis	Develops the evidence by sampling, analysis and characterization of materials, statistical analyses, geographical analysis, and transport and fate modeling	Brings together the modeling and analytical results to identify sources and estimate source contributions	Allocate the contribution of sources to the exposure <ul style="list-style-type: none"> Determine that the source is not appropriate for further assessment (e.g., the source is a natural hot spring) Gather more data and repeat the source assessment because evidence was unclear or insufficient
Predictive				
Risk	Identifies management goals, constraints, endpoints, and management options and then plans the analysis	Estimates the probable exposure and response given different scenarios and different types of evidence	Compares the risks estimated by the analysis and presents the risk estimates and uncertainties, recommends protective levels or restoration targets, or presents relative risks of alternative actions	Take action because of severe risks <ul style="list-style-type: none"> End the process because of minimal risks Gather more data and repeat the assessment due to uncertainty Proceed to a formal management assessment that balances risks against other considerations
Management	Focuses the assessment on societal values that may be affected by the suggested management options for reducing environmental risks	Qualitatively or quantitatively evaluates relevant decision criteria such as costs, risks, benefits, cultural and societal values, and regulatory compliance for each alternative action	Determines the relative advantages of the alternative actions based on their net benefits, cost-benefit ratios, net utilities, or other decision criteria	Attempt to resolve the environmental problem by some form of environmental intervention <ul style="list-style-type: none"> Take no action Request more information Determine whether and how to assess the success of the outcome
Outcome	Plans the monitoring programs and statistical analyses to be applied to the resulting data	Analyzes monitoring data to characterize changes in environmental conditions associated with the management actions	Compares the condition prior to and after actions to determine if the management goals are attained and the environmental problem is resolved	End the assessment process because goals have been achieved <ul style="list-style-type: none"> Return to either a risk or management assessment because goals are not being achieved Continue monitoring because the results are not clear

time frame. Planning during causal assessment includes two steps in the CADDIS stressor identification process (Fig. 4): (1) the cause is identified and a source assessment is initiated; (2) the identified cause is not within the jurisdiction of the manager and the problem is referred to an appropriate management body or the assessment process is terminated; and (3) the cause is not identified and new data are collected to refine the assessment.

Analysis

Analysis is defined here as a process by which data and other information are organized and evaluated and computations are performed to provide more useful information.

At the core of analysis are one or more causal relationships.

General and case specific empirical and mechanistic models

are used to infer what has happened in the past, whether conditions and change are natural or anthropogenic, or what may happen in the future. The analysis may include summary statistics, quantitative models, and logical arguments. Among the most useful analyses are those that demonstrate causal and source assessments, because causes and that the intensity or specific mechanism of a causal agent can or cannot cause the effect or accurately predicts the environmental disaster, appropriate actions may be obvious effect. In the CADDIS stressor identification process, analysis is broken down into two steps, evaluating evidence from the case and from elsewhere (Fig. 4). (www.epa.gov/caddis).

Synthesis

Synthesis brings together the results from the analysis to generate the findings of the assessment in a useful form for the decision. Synthesis is devoted to producing a coherent output that integrates all evidence and endpoints to inform the decision. This includes deriving endpoint estimates and associated uncertainties from the results of the analysis.

Integrating multiple forms of evidence, comparing the management alternatives, and deriving overall results. The methods and criteria for syntheses vary with the type of assessment, but they share similar processes of estimation, integration, comparison, and characterization (USEPA 2007). In the CADDIS stressor identification process, synthesis is the identification of a probable cause by weighing the evidence (Fig. 4).

Decisions and Actions

At the end of each assessment, a decision is made. The decision can be (1) to stop the assessment process because there is no further problem; (2) to perform an assessment-informed management action; (3) to initiate the next assessment in the sequence; or (4) to by-pass the next assessment and proceed to a another type of assessment.

Alternatively, although not a preferred option, a decision can be made without using the information offered by the assessment (e.g., if the assessment results suggest a politically or economically unacceptable conclusion). At the end of the CADDIS stressor identification

process, three typical types of decisions are possible (Fig. 4): (1) the cause is identified and a source assessment is initiated; (2) the identified cause is not within the jurisdiction of the manager and the problem is referred to an appropriate management body or the assessment process is terminated; and (3) the cause is not identified and new data

are collected to refine the assessment.

Abbreviating the Framework

Depending on the mandate, a full assessment can be initiated at any point in the integrated framework and need not include all of the potential assessments (Fig. 4). In particular, an expediency or emergency by-pass circumstance causal and source assessments, because causes and sources are known. Further, in an imminent or on-going environmental disaster, appropriate actions may be obvious and do not require a case-specific assessment. In such cases, containment is paramount and rapid evaluation of risks from different remedial options is needed. Ideally, a risk-based remedial action plan would already be available to the emergency response team. The flexibility to begin or return to any step in the process allows for iteration, self-checks, and adaptive management.

Applying the Framework

The integrated framework is implicit in some existing environmental assessment and management processes. We have chosen three cases illustrating different regulatory programs and that have led to environmental outcomes. Because the framework is applied after the fact, the organization of the cases is illustrative rather than descriptive of how the assessment process was organized.

Example 1: Middle Cuyahoga River Assessments TMDL Program

To illustrate how our framework relates to the U.S. Clean Water Act's cycle of assessments and management decisions, we have selected the Middle Cuyahoga River as a case study.

Initiator

Each year a report is filed with the U.S. Congress that lists all bodies of water identified by the states as impaired, the 303d List of Impaired Waters. The Clean Water Act requires that steps be taken to restore 303d-listed bodies of impaired water to acceptable, useful conditions. To that end, the U.S. Environmental Protection Agency (USEPA) mandates that

states determine the Total Maximum Daily Load (TMDL) *Causal Pathway Assessment*

of the pollutant that can be safely discharged while maintaining acceptable use of the body of water. The TMDL In 2000, that section of the river was placed on the State rule further requires states to develop a restoration implementation plan. The Figure eight diagram (Fig. 5) depicts the sequence of assessments involved with the 303(d) listing and the TMDL processes (USEPA 2002). Although its form is different, the diagram contains all the components of our environmental assessment framework in roughly the same sequence (Fig. 5).

Condition Assessment

The Ohio EPA monitors waters of the state on a five year cycle and characterizes streams from exceptional to very poor condition based on bioassessments of fish and benthic invertebrate assemblages (Ohio EPA 1988). In 1996, the Ohio EPA found that the Middle Cuyahoga River, near the cities of Kent and Munroe Falls, was only partially attaining State standards for warm water habitats (Table

Risk Assessment

The TMDL risk assessment determined that reductions in nutrients alone were unlikely to improve aquatic life due to contributing factors from two dams which altered flow, aeration, and benthic habitat. Furthermore, the dams were physical barriers to fish migration. The TMDL recommended increasing natural river characteristics by modification of dams and flow releases, and decreasing loading of pollutants that lead to low dissolved oxygen. Options included minimum release requirements for the Akron Reservoir, removal of dams in Kent and Munroe Falls, or significant upgrades to point source discharges to drastically reduce nutrient loadings.

Management Assessment

For the Kent locale, there were technical and social challenges due to the historic value of the dam and nearby area as well as costs for upgrading waste water treatment facilities. Ultimately a management alternative was negotiated and implemented that preserved the historic character of the area while providing a free-flowing river that aerated the water.

Management Action

In Kent, the old canal lock east of the dam was removed, the historically significant arched dam structure was preserved and modified into a fountain, and the area of the former dam pool, now above water, was developed into a heritage park (Fig. 6). Upstream, extensive natural stream channel and stream-bank restoration further increased the likelihood of improvements to aquatic life. The natural waterfall was rediscovered under the Monroe Dam and its aesthetic form was restored by removing the dam.

Outcome Assessment

Monitoring before and after remediation demonstrated that dissolved oxygen was increased, species that had been

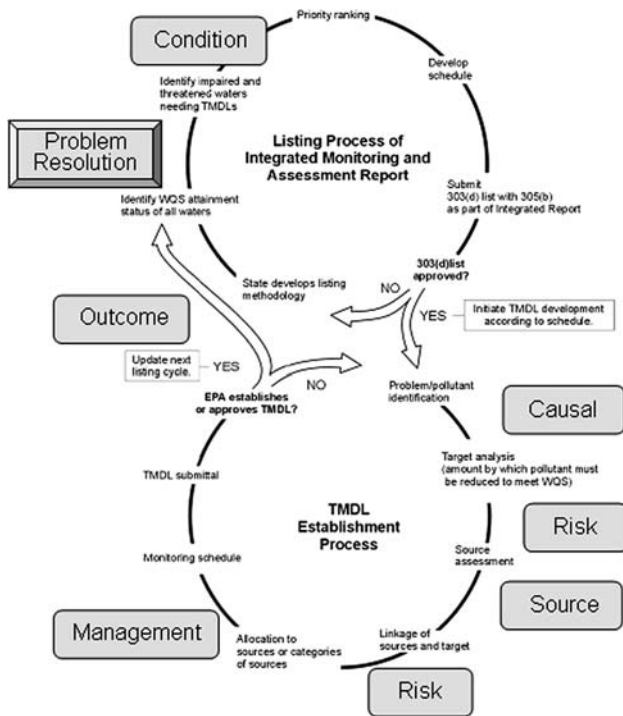


Fig. 5 A diagram of the assessments and decisions involved in the listing of waters as impaired and the determination of total maximum daily loads (USEPA 2002). The corresponding components of the assessment and management framework are indicated in grey oblongs: condition assessment (listing process), causal assessment (problem/pollutant identification), risk assessment of effects from exposure (target analysis), source assessment, risk assessment of sources (Linkage of sources and target), management assessment (allocation to sources), and outcome assessment (update next listing cycle) (from USEPA 2002)

Table 2 Ohio EPA Kent Dam pool bioassessment

	Pre-remediation	Post-remediation
Fish index (IBI)	28.0	44.0
Habitat index (QHEI)	51.0	79.5
Warm water criteria: IBI \geq 40; QHEI \geq 60		

Source: USEPA (2005)

excluded by the dams were found in the area, and a wide diversity and abundance of fish were observed (USEPA).

Resolution

The full assessment cycle was successful because each assessment was integrated with the next assessment, clear objectives were developed for each assessment and the overall integrated assessment, and different assessors were responsible for assessments within their area of expertise and authority. Compelling scientific information was succinctly provided to resource managers and stakeholders who were involved at appropriate stages of the assessments. Multiple regulatory authorities were invoked to maintain momentum and financial incentives, and resources were obtained to implement management actions (USEPA).

Example 2: Lower Fox River/Green Bay Superfund Assessments

Initiator

The Comprehensive Environmental Response, Compensation, and Liability Act of 1980 (CERCLA or Superfund), was created to clean up hazardous wastes that posed potential threats to human health or the environment. After the law was passed, U.S. governmental agencies developed two assessment and management processes to address different provisions of the Act:

- (1) Agencies that are trustees of natural resources perform a Natural Resource Damage Assessment (NRDA). It includes a condition assessment to determine whether resources at the site are injured and a causal assessment to determine whether the wastes are the cause.
- (2) The USEPA and state regulatory agencies perform a condition assessment to determine if the site is sufficiently contaminated to be on the National Priority List. They then perform a set of risk assessments, the remedial investigation/feasibility study (RI/FS), to estimate risks from no action and from alternative remedial actions (USEPA 1998b). The Record of Decision (ROD) is a management assessment that selects the remedial action.

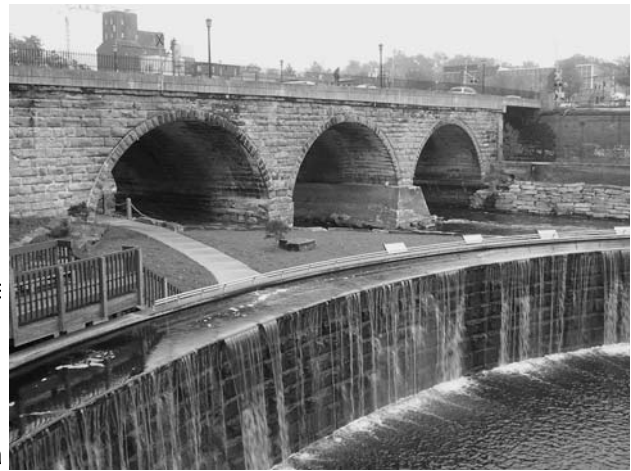


Fig. 6 After completion of the Kent Dam project, the river flows freely through the old lock structure (right) and the original arched stone dam was retained and converted to a fountain (left) (photo courtesy of Ohio EPA)

Superfund Natural Resource Damage Assessment: Biological Condition and Causal Pathway Assessments

Before the Fox River became a Superfund site in 1999, extensive condition and causal assessments were done by the Wisconsin Department of Natural Resources (WDNR). The Department of the Interior (DOI) and participating Native American Trustees for the NRDA on the lower Fox River and Green Bay, Wisconsin, site filed the official Natural Resources Damage Assessment reporting injuries to migratory birds resulting from hazardous substances within the Fox River and Green Bay system (Stratus Consulting, Inc. 1999a; WDNR and USEPA 2006; USFWS 1999). WDNR and USEPA also documented pathways from known releases of PCBs in the Fox River to known injuries in the Fox River, Green Bay, and Lake Michigan (Stratus Consulting, Inc. 1999c; USEPA 1992).

The condition assessment revealed numerous effects on fish and wildlife including endangered species and loss on natural resources to humans. PCB exposure, uptake, and injury were described for Forster's tern (*Sterna forsteri*), double-crested cormorants (*Phalacrocorax auritus*), red-breasted mergansers (*Mergus serrator*), black-crowned night-herons (*Nycticorax nycticorax*), tree swallows (*Ichthyophaga bicolor*), bald eagles (*Haliaeetus leucocephalus*), and other species. In addition, liver tumors were found in 34% of Walleye and PCB concentrations in multiple fish species were sufficient to impose human consumption advisories (Stratus Consulting, Inc. 1999b). Causal assessments established that PCBs were the cause of observed effects on wildlife. A source assessment traced the PCBs to their manufacture by Monsanto and then use by paper mills on the Fox River that manufactured

carbon-free copy paper (WDNR and USEPA 2006, US-FWS 1999).

Superfund Site Remediation

Figure 7 depicts the rather complicated site remediation decision making and affords a clear target for the assessment process from listing a Superfund site to post-remediation process. In 2005 and 2006, some of the necessary monitoring.

Condition Assessment (Chemical)

The Wisconsin Department of Natural Resources (WDNR) and the USEPA listed this site based on a waste-focused condition assessment (versus the resource-focused condition assessment of the NRDA) that revealed approximately 36 metric tons of PCBs in the lower Fox River and Green Bay (USEPA 1989). Sediments of the lower 30 miles (48 km) of the Fox River contain PCBs concentrations as high as 100 parts per million (ppm) (WDNR 1988).

Risk Assessment

Based on a risk assessment (RI/FS) for 63 km of the Lower Fox River and Green Bay (RETEC Group 2002), the regulators filed two records of decision in 2002 and 2003 that set PCB clean up levels at 1 ppm (WDNR 2003, WDNR and USEPA 2006).

Management Assessment

The Superfund remedial decision process compares the options using nine criteria: protection of human health and the environment; compliance with Applicable or Relevant

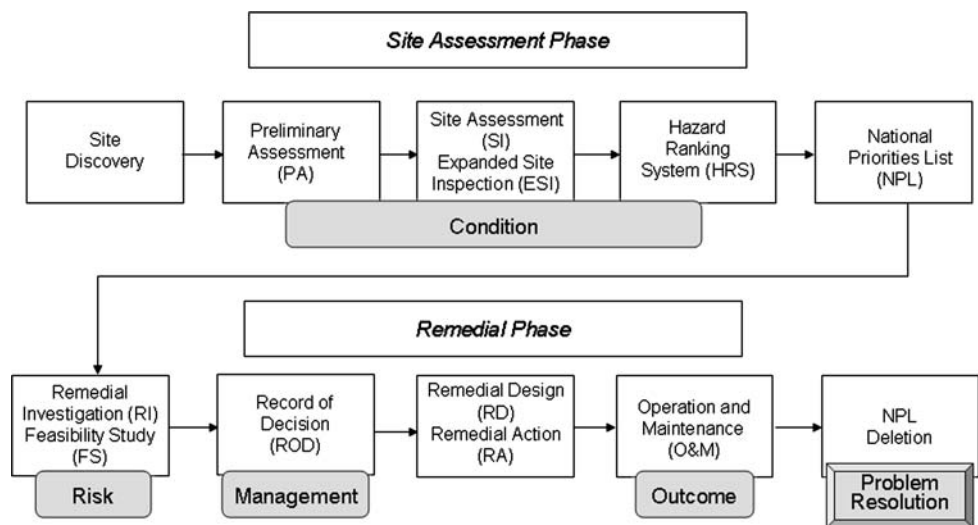
and Appropriate Requirements (ARARS) (regulatory standards); long-term effectiveness; reduction of toxicity, mobility, or volume; short-term effectiveness; implementability; cost; agency acceptance; and community acceptance. This provides consistency and transparency in decision making and affords a clear target for the assessment process from listing a Superfund site to post-remediation process. In 2005 and 2006, some of the necessary consent decrees were completed that allocated the clean up costs among polluters of the river. In 2006, a remediation implementation plan was accepted that recommended a combination of dredging, capping, and other procedures to support an outcome assessment (WDNR and USEPA 2006). Remediation began in 2007 and will be followed by 40 years of monitoring and outcome assessments.

Example 3: Pesticide Registration—Carbofuran

Initiator

In the United States, pesticides must be registered by the USEPA and periodically reregistered. The registration of new products is based on conventional health and ecological risk assessments using modeled exposures and laboratory tests of toxic effects. However, reregistrations may take advantage of monitoring data or incident reports to assess conditions resulting from prior uses and incorporate the results of those epidemiological assessments into the risk assessment.

Fig. 7 Superfund process: The site assessment phase is a condition assessment that determines whether the site is sufficiently contaminated to be listed. The remedial phase includes the risk assessment of the RI/FS and the management assessment of the ROD. The outcome assessment is a component of the operation and maintenance plan that may lead to the deletion of the site from the National Priority List (NPL) (original diagram no longer on website, similar found in USEPA 1998b)



Predictive Assessment

Carbofuran is an N-methyl carbamate insecticide which acts by inhibiting the neurotransmitter acetylcholine.

Because of its extreme toxicity to birds and the many reported incidents of bird kills, the granular form was

restricted to a few uses in 1994. Both forms were reassessed in 2006 under the requirements of the Food Quality

Protection Act (USEPA 2006b). The risk assessment used

both deterministic and probabilistic risk modeling to estimate that risks of mortality were severe for birds and

mammals. In addition, it used condition assessments and causal assessments in the form of 31 bird-kill incident

reports and kill investigations that determined carbofuran to be the cause. These eco-epidemiological reports provided

another source of exposure-response information that confirmed the reasonableness of the risk models. The

human health risk assessment also found significant risks based on both risk models and human poisoning incidents.

Resolution

As a result of these findings, the Agency reached an interim decision that products containing carbofuran will not be

eligible for reregistration (USEPA 2006a). If this decision stands, there will be no outcome assessment because there

will be no carbofuran applications to monitor and assess. So, although monitoring requirements are common in

pesticide registration decisions, monitoring would not be necessary if carbofuran is banned.

Current Practice Compared with Ideal

Most assessments are not as well integrated as these selected examples. And, even these three were integrated

a somewhat ad hoc fashion. This is due in part to the lack of integration among environmental programs. For example,

the USEPA's Environmental Monitoring and Assessment Program (EMAP) was designed for evaluating status and

trends. EMAP data have been used to evaluate impairment of aquatic communities, but it is not connected to the

TMDL program which requires determination of causes of impairments. Similarly, the TMDL regulation requires that

performance of integrated assessments that provide a causes, sources and pollutant loads be calculated and the

implementation plans be prepared, but it does not specifically require implementation or an outcome assessment.

The Superfund's RI/FS and NRDA programs are not linked of risk assessment and management has resulted in inefficiencies. In some cases, lack of integration

of risk assessment and management has resulted in inefficiencies (NRC 2005). Furthermore, the language that is used in

the different programs masks their commonalities, making these processes seem more complicated than they really are.

Using a common framework could make integration more common and more effective.

Discussion and Conclusions

We believe that this matrix framework for environmental assessment and management provides significant advantages

because it is based on sound principles for scientifically informed multi-dimensional decision making (Suter and

Cormier 2008). First and foremost, it keeps assessors focused on supporting decisions that lead to resolution of an environmental

problem. These include the decisions that result from the individual assessments (how to proceed) and the

definitive environmental management decisions (what to do) and (are we done?). It makes it clear that both the assessors

and the other environmental scientists who generate the data must serve the interests and needs of environmental managers.

Without such an inclusive and decision-focused framework, it will not be clear to scientists how to generate a

useful synthesis of information. For example, many condition assessments do not provide the needed information for

assessing causation and do not generate condition measures that can address stakeholder concerns or support management

decisions. Further, the figurative and literal centrality of the end of the assessment process, the "problem resolution"

(Fig.), emphasizes the desire of decision makers to expediently and successfully complete the process and

move on to the next issue or problem.

Second, the framework emphasizes the need to fully use available science throughout the process. For example, risk

assessors should, whenever possible, look to condition and causal assessments rather than relying solely on standard

assumptions, models, and laboratory data. This is obvious in the risk assessments of ongoing problems like contaminated

sites. However, even with cases such as evaluation of risks posed by new chemicals, condition assessments of locations

exposed to analogous chemicals can provide important evidence. Similarly, risk assessments that do not

follow through with outcome assessments miss the opportunity to assure success and improve the scientific

bases for future assessments and management decisions. Third, the generality of the framework encourages the

implementation of integrated assessments that provide a consistent input to management decisions that benefit

the environment, human health, and human welfare at all relevant scales and levels of organization. The World Health

Organization developed a framework for integrated health and ecological risk assessment (Suter and others 2003;

WHO 2001), but the framework presented here integrates the entire assessment and management process so that the

decision maker receives consistent and coherent scientific support.

Finally, the common framework may unify diverse assessment frameworks and practices. Environmental assessments are done for many reasons in different places based on approaches developed at different times under different policies, so the underlying commonality is obscured. As a result, the components of the assessment process have been reinvented many times. Yet, examination reveals that they all fit within a pattern of discovery and resolution that can be explained by this common process and general framework.

The basic frameworks for human health and ecological risk assessment (NRC 1983, USEPA 1992, 1998) have been so successful in improving risk assessment practices that they have been adopted and applied in numerous countries and contexts (Dale and others 2008, Power and McCarty 1998, 2002). Similarly, we hope that a fully integrated framework for environmental assessment will provide a more uniform and, therefore, a clearer and more accessible process. We hope that a common language among assessors will increase cooperation and the likelihood that integrative environmental assessment will occur. By improving the relevance of the scientific input and increasing the transparency of the integrated assessment, we hope to increase rationality of the environmental management processes and lead to informed decision making.

Acknowledgments We appreciate the constructive criticisms from Jay Messer, Michael Kravitz, Larry Barnhouse, Rick Linthurst, and Michael Troyer, who may still disagree with some portions of the framework, but who share our commitment to ensuring that scientific knowledge influences and guides environmental decision making. We thank Steve Tuckerman of Ohio EPA for providing the photograph of the Kent Dam removal project. The ideas in this article are our own and do not represent policy or recommendations of the U.S. Environmental Protection Agency and our work was not financially supported by any group and was done on our own time.

Open Access This article is distributed under the terms of the Creative Commons Attribution Noncommercial License which permits any noncommercial use, distribution, and reproduction in any medium, provided the original author(s) and source are credited.

References

- Burgman M (2005) Risks and decisions for conservation and environmental management. Cambridge University Press, Cambridge, UK
- Dale VH, Biddinger GR, Newman MC, Oris JT, Suter GW, Thompson T, Armitage TM, Meyer JL, Allen-King RM, Benford EF, Burton GA, Chapman PM, Conquest LL, Fernandez IJ, Landis WG, Master LL, Mitsch WJ, Mueller TC, Rabeni CF, Rodewald AD, Sanders JG, van Heerden IL (2008) Enhancing the ecological risk assessment process. *Integrated Environmental Assessment and Management* 4(3)
- de Bruyn AMH, Marcogliese DJ, Rasmussen JB (2003) The role of sewage in a large river food web. *Canadian Journal of Fisheries and Aquatic Sciences* 60(11):1332–1344
- Efroymson RA, Nicollette JP, Suter II GW (2004) A framework for net environmental benefit analysis for remediation or restoration of contaminated sites. *Environmental Management* 34(3):315–331
- Fairbrother A, Kapustka LA, Williams BA et al (1997) Effects-initiated assessments are not risk assessments. *Human and Ecological Risk Assessment* 3(2):119–124
- Finkelstein ME, Gwiazda RH, Smith DR (2003) Lead poisoning of seabirds: environmental risks from leaded paint at a decommissioned military base. *Environmental Science and Technology* 37(15):3256–3260
- Fox GA (1991) Practical causal inference for ecopidemiologists. *Journal of Toxicology and Environmental Health Part A* 33(4):359–373
- Friis RH, Sellers TA (2003) *Epidemiology for public health practice*. Jones & Bartlett Publishers, Boston, MA
- Hanley N, Spash CL (1993) *Cost-benefit analysis and the environment*. Edward Elgar Publishing, Cheltenham, UK
- Holling CS (1978) *Adaptive environmental assessment and management*. Wiley and Sons, Chichester
- Karr JR, Chu EW (1999) *Restoring life in running waters: better biological monitoring*. Island Press, Washington, D.C
- Linkov I, Satterstrom FK, Kiker G et al (2006) Multicriteria decision analysis: a comprehensive decision approach for management of contaminated sediments. *Risk Analysis* 26(1):61–78
- Mahler BJ, van Metre PC, Bashara TJ et al (2005) Parking lot sealcoat: an unrecognized source of urban polycyclic aromatic hydrocarbons. *Environmental Science and Technology* 39(15):5560–5566
- Menzie CA, Hoepfner SS, Cura J et al (2002) Urban and suburban stormwater runoff as a source of polycyclic aromatic hydrocarbons (PAHs) in Massachusetts estuarine and coastal environments. *Estuaries* 25(2):165–176
- Murphy BL, Morrison RD (eds) (2002) *Introduction to environmental forensics*. Academic Press, San Diego, CA
- National Research Council (NRC) (1983) *Risk assessment in the federal government: managing the process*. National Academy Press, Washington, DC
- National Research Council (NRC) (2005) *Superfund and mining megasites: lessons from the Coeur d'Alene river basin*. National Academies Press, Washington, DC
- Ohio Environmental Protection Agency (Ohio EPA) (1988) *Biological criteria for the protection of aquatic life: volume II: users manual for biological assessment of Ohio surface waters*. Ohio Environmental Protection Agency, Ecological Assessment Section, Division of Water Quality, Planning & Assessment, Columbus, OH. WQMA-SWS-6. Available at http://www.epa.state.oh.us/dsw/documents/BioCrit88_Vol2Cover.pdf. Accessed 12 May 2008
- Ohio Environmental Protection Agency (Ohio EPA) (2000) *Total maximum daily loads for the Middle Cuyahoga River, Final report*. Ohio Environmental Protection Agency, Division of Surface Water, Columbus, OH
- Power M, McCarty LS (1998) A comparative analysis of environmental risk assessment/risk management frameworks. *Environmental Science and Technology* 32:224A–231A
- Power M, McCarty LS (2002) Trends in the development of ecological risk assessment and management frameworks. *Human and Ecological Risk Assessment* 8:7–18
- Presidential/Congressional Commission (1997) *Risk assessment and risk management in regulatory decision-making*. The Presidential/Congressional Commission on Risk Assessment and Risk Management, Washington, DC
- RETEC Group (2002) *Final baseline human health and ecological risk assessment: Lower Fox River and Green Bay, Wisconsin remedial investigation and feasibility study*. Wisconsin Department of Natural Resources, Madison, WI

- Science Advisory Board (SAB) (2000) Toward integrated environmental decision-making. Science Advisory Board, U.S. Environmental Protection Agency, Washington, DC, EPA-SAB-EC-00D011
- Scheuhammer AM, Templeton DM (1998) Use of stable isotope ratios to distinguish sources of lead exposure in wild birds. *Ecotoxicology* 7(1):37D42
- Simpson JM, Santo Domingo JW, Reasoner DJ (2002) Microbial source tracking: state of the science. *Environmental Science and Technology* 36(24):5279D5288
- Stratus Consulting, Inc. (1999a) Injuries to avian resources, Lower Fox River/Green Bay natural resource damage assessment. U.S. Fish and Wildlife Service, Washington, DC
- Stratus Consulting, Inc. (1999b) Injuries to fishery resources, Lower Fox River/Green Bay natural resource damage assessment. U.S. Fish and Wildlife Service, Washington, DC
- Stratus Consulting, Inc. (1999c) PCB pathway determination for the Lower Fox River/Green Bay natural resource damage assessment. U.S. Fish and Wildlife Service, Washington, DC
- Suter II GW (2001) Applicability of indicator monitoring to ecological risk assessment. *Ecological Indicators* 1:101D112
- Suter II GW, Cormier (2008) A theory of practice for environmental assessment. *Integrated Environmental Assessment and Management* 4(3)
- Suter II GW, Cormier SM, Norton SB (2007) Ecological epidemiology and causal analysis. In: Suter GW II (eds) *Ecological risk assessment*, 2nd edn. CRC Press, Boca Raton, FL, pp 39D68
- Suter II GW, Norton SB, Cormier SM (2002) A methodology for inferring the causes of observed impairments in aquatic ecosystems. *Environmental Toxicology and Chemistry* 21(6):1101D1111
- Suter II GW, Vermier T, Munns Jr WR et al (2003) Framework for the integration of health and ecological risk assessment. *Human and Ecological Risk Assessment* 9(1):281D301
- United States Environmental Protection Agency (USEPA) (1989) Green Bay/Fox River mass balance study. U.S. Environmental Protection Agency, Region V, Chicago, IL, EPA-905/8-89/001
- United States Environmental Protection Agency (USEPA) (1992) Framework for ecological risk assessment. U.S. Environmental Protection Agency, Risk Assessment Forum, Washington, DC, EPA/630/R-92/001
- United States Environmental Protection Agency (USEPA) (1994) Guidance for the data quality objectives process. EPA QA/G-4. U.S. Environmental Protection Agency, Office of Research and Development, Washington, DC, EPA/600/R-96/055
- United States Environmental Protection Agency (USEPA) (1998a) Guidelines for ecological risk assessment. U.S. Environmental Protection Agency, Risk Assessment Forum, Washington, DC, EPA/630/R-95/002F
- United States Environmental Protection Agency (USEPA) (1998b) RCRA, Superfund and EPCRA hotline training module: introduction to the Superfund response process. U.S. Environmental Protection Agency, Office of Solid Waste and Emergency Response, Washington, DC, EPA 540-R-98-029. OSWER 9205.5-14A. PB98-963 237. Available <http://www.epa.gov/superfund/contacts/sfhotline/resp.pdf>. Accessed 12 May 2008
- United States Environmental Protection Agency (USEPA) (2000) Stressor identification guidance document. U.S. Environmental Protection Agency, Office of Water, Washington, DC. EPA/822/B-00/025. Available at <http://www.epa.gov/waterscience/criteria/stressors/stressorid.pdf>. Accessed 12 May 2008
- United States Environmental Protection Agency (USEPA) (2002) The twenty needs report: how research can improve the TMDL program. U.S. Environmental Protection Agency, Office of Water, Office of Wetlands, Oceans and Watersheds, Assessment and Watershed Protection Division (4503T), Washington, DC, EPA 841-B-02-002. Available at http://www.epa.gov/owow/tmdl/20needsreport_8-02.pdf. Accessed 12 May 2008
- United States Environmental Protection Agency (USEPA) (2005) Section 319 nonpoint source program success story, Ohio: dam modification project helps restore water quality in the Middle Cuyahoga River. U.S. Environmental Protection Agency, Office of Water, Washington, DC EPA 841-F-05-004Y. Available at http://www.epa.gov/OWOW/NPS/Success319/state/pdf/oh_cuy.pdf. Accessed 12 May 2008
- United States Environmental Protection Agency (USEPA) (2006a) Carbofuran; interim reregistration eligibility decision; notice of availability. *Federal Register* 71(168):51610D51612
- United States Environmental Protection Agency (USEPA) (2006b) Interim reregistration eligibility decision: carbofuran. U.S. Environmental Protection Agency, Prevention, Pesticides and Toxic Substances (7508P), Washington, DC, EPA-738-R-06-031. Available at http://www.epa.gov/oppsrd1/reregistration/REDs/carbofuran_ired.pdf. Accessed 12 May 2008
- United States Environmental Protection Agency (USEPA) (2007) Causal analysis, diagnosis decision information system. Available at www.epa.gov/caddis. Accessed 12 May 2008
- USFWS (US Fish and Wildlife Service) (1999) Preassessment screen and determination: Lower Fox River and Green Bay, Wisconsin. U.S. Fish and Wildlife Service, Region 3, Ft. Snelling, MN, Available at <http://www.fws.gov/Midwest/FoxRiverNRDA/prescreen.html>. Accessed 12 May 2008
- Wisconsin Department of Natural Resources (WDNR) (1988) Lower Green Bay remedial action plan for the lower Fox River and lower Green Bay: area of concern. Wisconsin Department of Natural Resources, Madison, WI, PUBL-WR-175-87 REV 88
- Wisconsin Department of Natural Resources (WDNR), United States Environmental Protection Agency (USEPA) (2003) Record of decision, operable units 3, 4, and 5, Lower Fox River and Green Bay, Wisconsin. U.S. Environmental Protection Agency, Region V, Chicago, IL
- Wisconsin Department of Natural Resources (WDNR), United States Environmental Protection Agency (USEPA) (2006) Final basis of design report: Lower Fox River and Green Bay Site; Brown, Otagami and Winnebago counties. U.S. Environmental Protection Agency, Region V, Chicago, IL. Available at http://dnr.wi.gov/org/water/wm/foxriver/documents/BODR/Final_BODR_Volumel.pdf. Accessed 12 May 2008
- World Health Organization (WHO) (2001) Report on Integrated Risk Assessment. World Health Organization, Geneva, Switzerland, WHO/IPCS/IRA/01/12