

Wyckoff/Eagle Harbor Site

Case Study and Lessons Learned

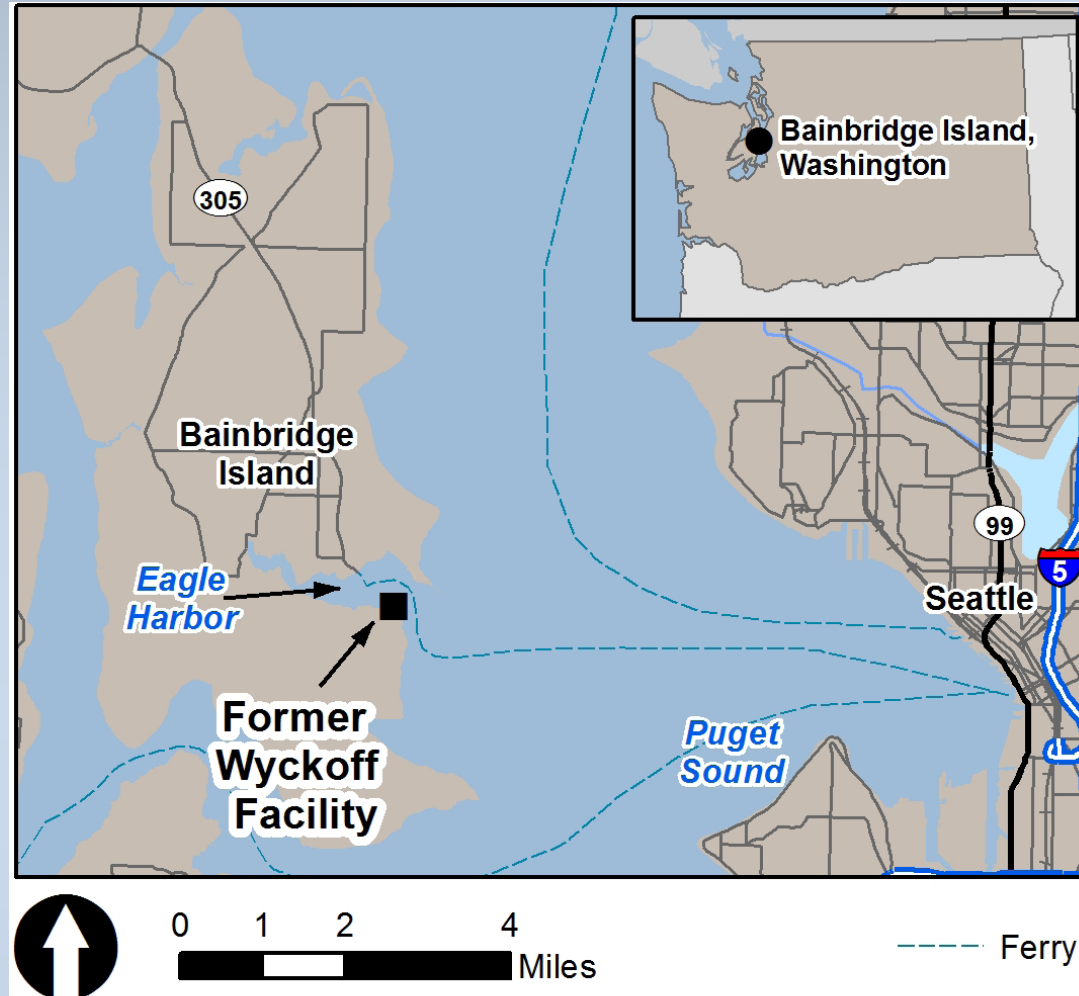


Topics for Today

- Brief Site History
 - Cleanup Actions to Date
 - Redevelopment Actions to Date
- Reuse Planning Process
- Reuse Outcomes
- Additional Cleanup Actions Proposed
- Lessons Learned
- Questions



Site Location



Sources: Esri, DeLorme, AND, Tele Atlas, First American, UNEP-WCMC and USGS.

Suquamish Tribe Village on Eagle Harbor - Early 1900s



Cleanup History

- Added to the Superfund list in 1987
- Contamination found in upland soils and groundwater, and in Eagle Harbor sediments
- Two primary sources of contamination
 - Wyckoff wood treating facility
 - Former shipyard
- Extensive cleanup actions implemented between 1993 and 2008

Site Overview



Site History

Wood treating facility 1940s



Cleanup Actions to date: Upland

- Demolition and removal of buildings, chemical storage tanks, grossly contaminated surface soils
- Perimeter sheet pile wall
- Groundwater extraction and treatment system (wells, treatment plant)
- Fencing, signage to prevent exposure to soils

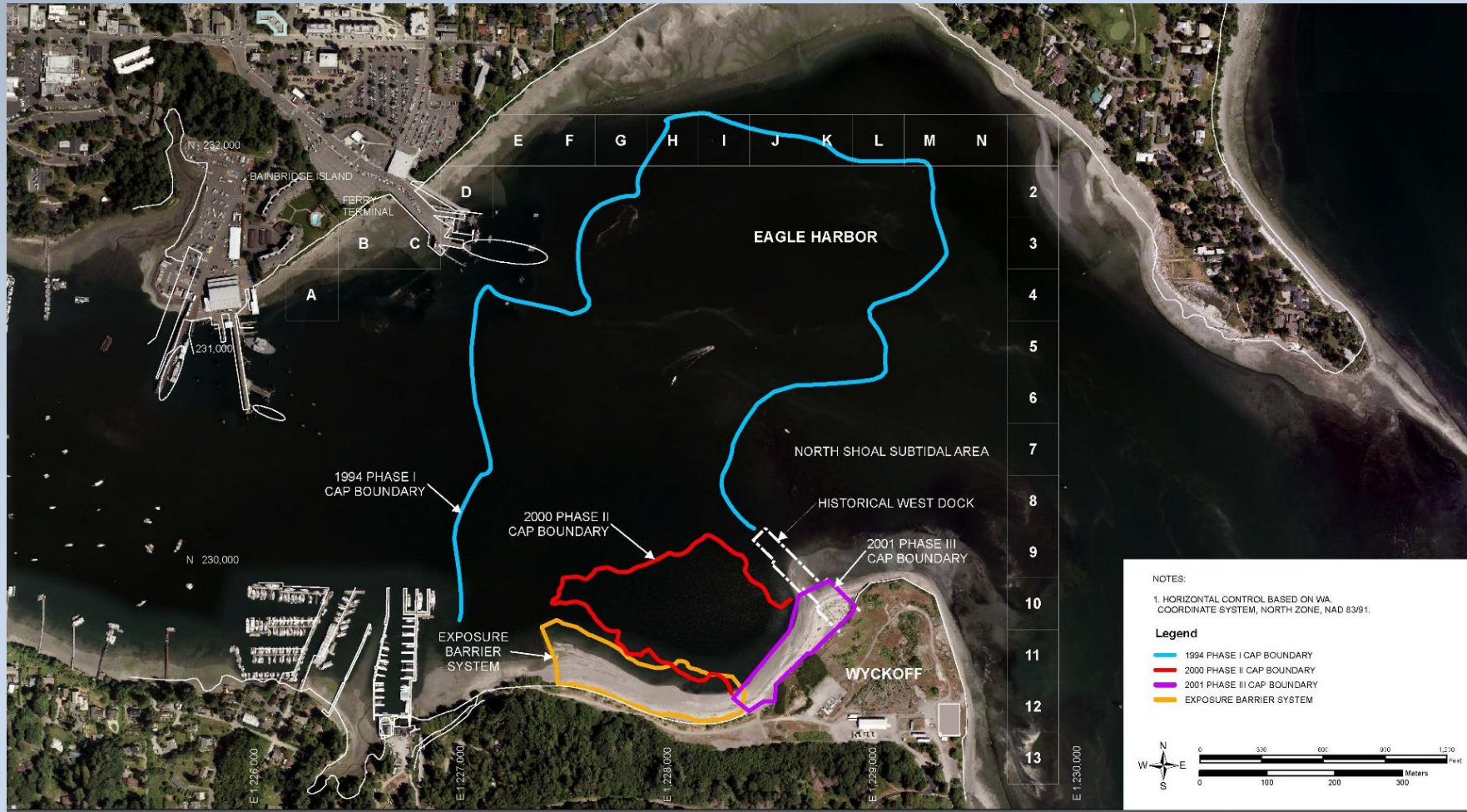
Current Site Conditions



Cleanup Actions to date: Offshore

- Sediment cap over 70 acres of Eagle Harbor
 - Built in phases 1993 - 2001
- West Beach
 - Wooden bulkhead demolished
 - Contaminated soils removed
 - Exposure Barrier System built in 2008
- Extensive cap repair 2017

Sediment Cap in Eagle Harbor



Former bulkhead along West Beach



West Beach Today



Redevelopment Actions to Date

- Property purchased by the City and Bainbridge Island Metro Parks park in early 2000s
- Trails constructed, signage posted
- View Point looking across Puget Sound
- Bainbridge Island Japanese American Exclusion Memorial constructed on western end of Park

Major Steps to Park Development

- Planning group that focused on acquiring the property, Wyckoff Advisory Committee
- Acquisition – in several phases: 2004 – 2006.
 - EPA Pilot Project Grant
 - Pre-purchaser Agreement, Justice Department Covenant and Agreed Order
 - Grants and Funding Partners, Trust for Public Land and BILT
- Development of trails
- Site Design: City – Parks Advisory Design Committee – University of Washington
- Memorial, First Phase Development.

Joel Pritchard/Japanese American Memorial Park Project



Pritchard Park Trails



Hiking shoes recommended
for woodland trails.



Trail Map



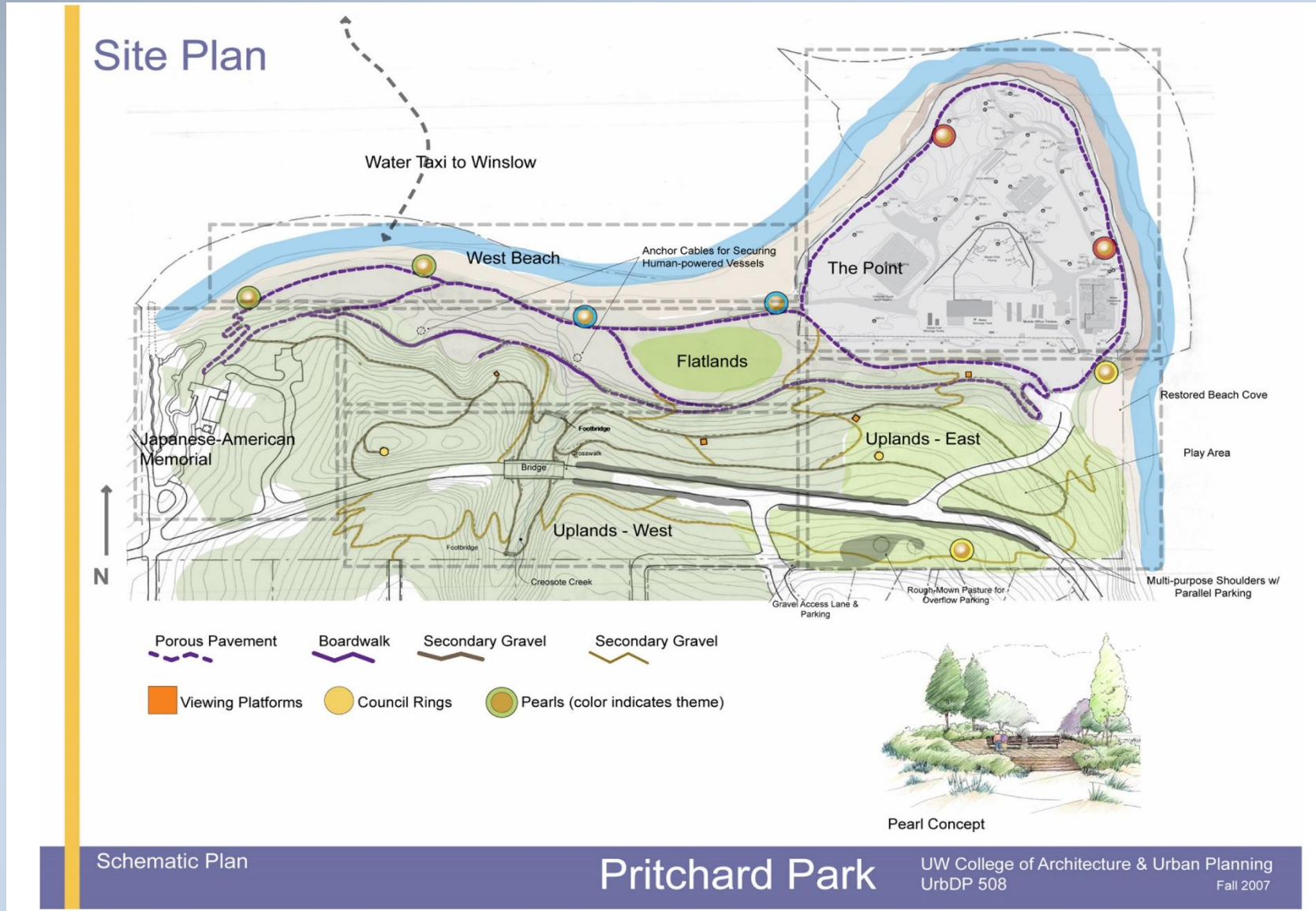
Information Kiosk



Parking

Funding support for this display provided by the ABC Conservation/Education Foundation
in coordination with the Association of Bainbridge Communities (ABC) and
the Bainbridge Island Metro Parks and Recreation District
www.pritchardpark.org

Site Plan Allows for Future Adaptation of the Point – Next Phase of Clean-up



Pritchard Park Plan Accentuates Location



Restored Beach Satisfies Local Needs



Point



Upland Trails: Provides for Recreation Demand



Shoreline and Trail Interface



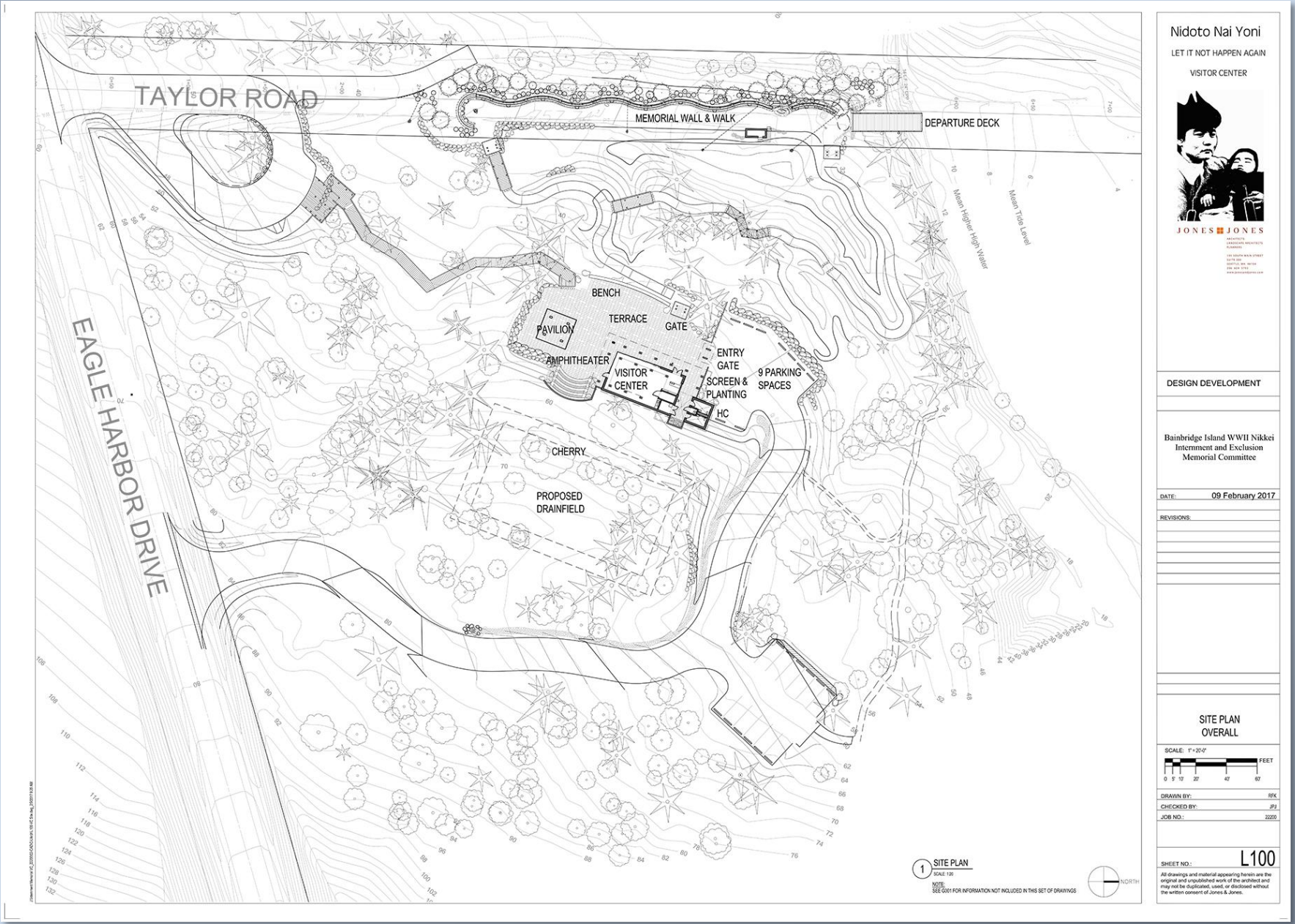
Nidoto Nai Yoni

“Let it not happen again”

- On March 30, 1942 the federal government through Executive Order 9066 gave authority to the War Department to remove what would total over 110,000 persons of Japanese ancestry from the west coast.
- The first 227 of these residents came from Bainbridge Island.



Memorial Planning with NPS and Local Partners



Nidoto Nai Yoni
LET IT NOT HAPPEN AGAIN
VISITOR CENTER



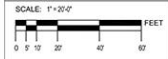
DESIGN DEVELOPMENT

Bainbridge Island WWII Nikkei
Internment and Exclusion
Memorial Committee

DATE: 09 February 2017

REVISIONS:

SITE PLAN
OVERALL



DRAWN BY: BK
CHECKED BY: JP
JOB NO.: 2222

SHEET NO.: L100

All drawings and material appearing herein are the original and unpublished work of the architect and may not be duplicated, used, or disclosed without the written consent of Jones & Jones.

1 SITE PLAN
SCALE: 1\"/>

Memorial Planning with NPS and Local Partners



Nidoto Nai Yoni
LET IT NOT HAPPEN AGAIN
VISITOR CENTER



JONES & JONES
ARCHITECTS
CORPORATE ARCHITECTS
PLANNING
1000 15th Street, NW
Washington, DC 20004
202.462.1000
www.jonesandjones.com

DESIGN DEVELOPMENT

Bainbridge Island WWII Nikkei
Internment and Exclusion
Memorial Committee

DATE: 09 February 2017

REVISIONS:

AERIAL PERSPECTIVE
RENDERING

SCALE: NTS
0 10 20 30 40 50 60 70 80 90 100 FEET

DRAWN BY: RFX
CHECKED BY: JFJ
JOB NO.: 22220

SHEET NO.: **R001**

All drawings and material appearing herein are the original and unpublished work of the architect and may not be duplicated, used, or disclosed without the written consent of Jones & Jones.

The Plan Provides for Interpretation of Pivotal Events for the Nation and the Community: Japanese American Internment

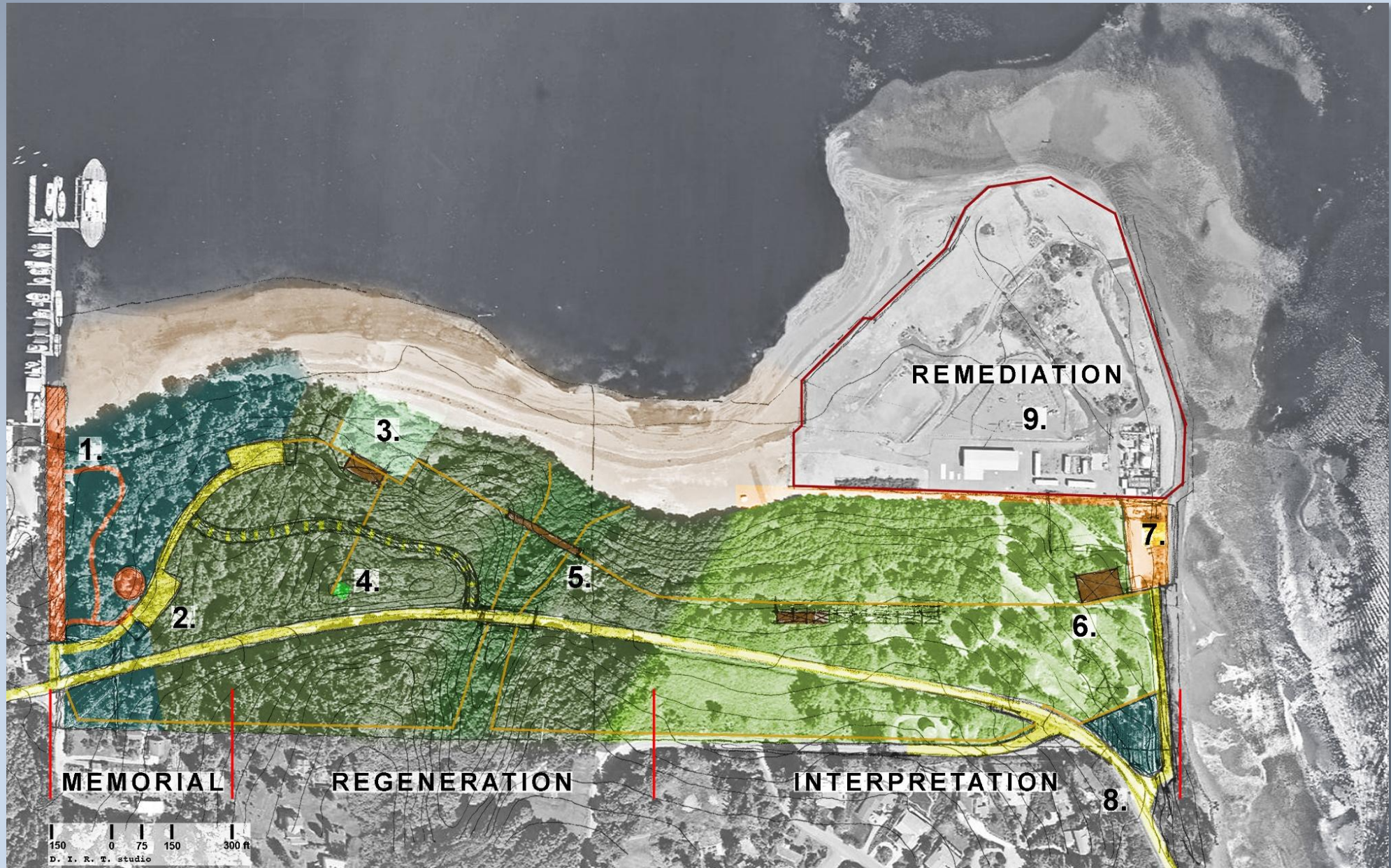






*"I was kind of afraid, but the neighbor girl that
I used to play with came up and welcomed me."
- Eiko Suyematsu Shibayama*

Joel Pritchard/Japanese American Memorial Park Project



Park Planning Process: Lessons Learned

- Know the local setting -- its landscape, history and people. Something has happened here prior to Superfund status.
- Answer the What, Who and When... not Just Where and How.
- Develop the intellectual infrastructure and *patience* for decision-makers; a plan discusses site constraints but points the direction forward toward future opportunities.
- Superfund Site status will represent more than a clean-up to a community when related to the human history of place; prior and future endeavors; and seeks to re-instill a sense of dignity.

More Cleanup Work is Needed

- In the Upland portion of the site
 - Perimeter wall is corroding
 - Groundwater extraction & treatment system is expensive, will require >100 years of operations
- On the East Beach and North Shoal:
 - Seeps of creosote remain on the beaches
 - Beaches are closed to shellfish harvesting
- Additional cleanup actions proposed in 2016
 - EPA and Bainbridge Island Metro Parks will continue to coordinate as cleanup plans are developed

To Learn More

- Community re-use plan:
 - <http://www.bainbridgewa.gov/574/Pritchard-Park-Design-Recommendations>
- Fact sheets and technical documents about the cleanup:
 - <http://www.epa.gov/superfund/wyckoff-eagle-harbor>
- Pritchard Park:
 - <https://biparks.org/parks-trails-finder/>
- Japanese American Exclusion Memorial:
 - <http://bijaema.org/>
- Site reuse case study:
 - <https://www.epa.gov/superfund-redevelopment-initiative/depth-case-studies-superfund-reuse>

