

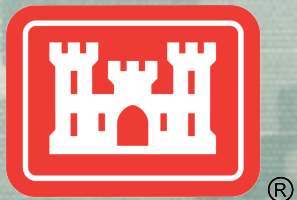
# M2S2

## Briefing

Omaha District Corps of Engineers  
Military Munitions Design Center (MMDC)

Glenn Marks  
MMDC Manager

April 24, 2014



US Army Corps of Engineers  
**BUILDING STRONG**®





## *Military Munitions Response Program Discussion Topics*

- **Omaha District Military Munitions Design Center**
  - **In-house capabilities**
  - **Doing business with Omaha MMDC**
    - **Contracts**
    - **Challenges**
    - **Suggestions**
    - **Ongoing contractor challenges**
  - **Featured Project**



# FY14 Procurement Schedules – New Contracts

## Environmental Remediation Branch

Contract Original Date Revised Date	Value	Internal Review	Issue RFP	Proposals Due	Discussions Completed	SSA Review and Selection	Peer Review BOB or PARC Completed	Award
1-Maxwell/Gunter Arnold PBR	\$45M	21 Mar 14	10 Apr 14	20 May 14	16 Jun 14	25 Jun 14	11 Jul 14	17 Jul 14
2-Pueblo CD PBR	\$70M	14 Apr 14	07 Jul 14	1 Aug 14	21 Aug 14	28 Aug 14	12 Sep 14	17 Sep 14
3-ECS, 8(a)	\$60M	14 Apr 14	05 May 14	04 Jun 14	03 Aug 14	03 Sep 14	10 Sep 14	30 Sep 14
4-MMRP SATOC	\$9.9M	23Apr 14	12 May 14	11 Jun 14	08 Jul 14	25 Jul 14	08 Aug 14	15 Aug 14
5-AAS, SB	\$25M	19 Jun 14	26 Jun 14	25 Jul 14	18 Aug 14	01 Sep 14	22 Sep 14	03 Oct 14
6-ECS, SB	\$60M	18 Jan 12	22 May 12	11 Jul 12	17 Mar 14	16 Apr 14	2 May 14	9 May 14
7-ERS Unrestricted	\$400M	25 Apr 14	04 Jun 14	05 Jul 14	27 Aug 14	30 Sep 14	19 Nov 14	28 Jan 15



## ***MMDC IN-HOUSE CAPABILITIES***

- **Program/project managers**
  - 13 dedicated to MMRP
  
- **OE Safety Specialists (OESS)**
  - 10 former military EOD personnel
  - Major responsibilities
    - Project Managers eyes and ears during the field work
    - ESS/ESP preparation, MEC work plan review
    - Field safety oversight, MEC clearance QA, and MPPEH certification
  
- **Geophysicists**
  
- **Chemists**
  
- **Risk Assessors**



# ***DOING BUSINESS WITH OMAHA MMDC***

## ***Challenges***

- **Programmatic**

- **Risk based approach – address risk munitions pose, not munitions themselves**
- **No MEC - no MC**
- **Inexperienced regulators (which has improved immensely)**
- **Technology limitations**
- **Funding**



# ***DOING BUSINESS WITH OMAHA MMDC***

## ***Challenges (con't)***

- **Project management and technical competency**

- **Experienced PM's and technical staff**
- **PM's and technical staff that truly understand methodologies and technologies and how to apply them correctly considering the project phase and dynamics**

- **Investigations**

- **PA**
- **SI**
- **EECA**
- **RI**

- **Removal/Remedial Actions**

- **TCRA**
- **NTCRA**
- **Remedial action**

- **Project dynamics**

- **Customer requirements**
- **Regulatory requirements**
- **Cultural and natural resources**
- **Funding**
- **Schedule**
- **Location**
- **Site specific conditions**
- **Future land use**

- **Technical Approach (s)**

- **Visual surveys**
- **Geophysical mapping**
- **Wide Area Assessment**
- **XRF**
- **MC sampling**
- **Anomaly avoidance**
- **Construction support**
- **ESS/ESP**
- **Surface clearance**
- **Intrusive removals**



# ***DOING BUSINESS WITH OMAHA MMDC***

## ***Suggestions***

- **Experienced PM's – get them in the field more often**
- **Get to know, understand and embrace the MMDC philosophies/approaches and apply them to our projects**
- **Get to know and understand the MMDC PM you are working for – what are their needs and management style - accommodate them**
- **Get to know the technical support people, their expertise, strengths and work with them**



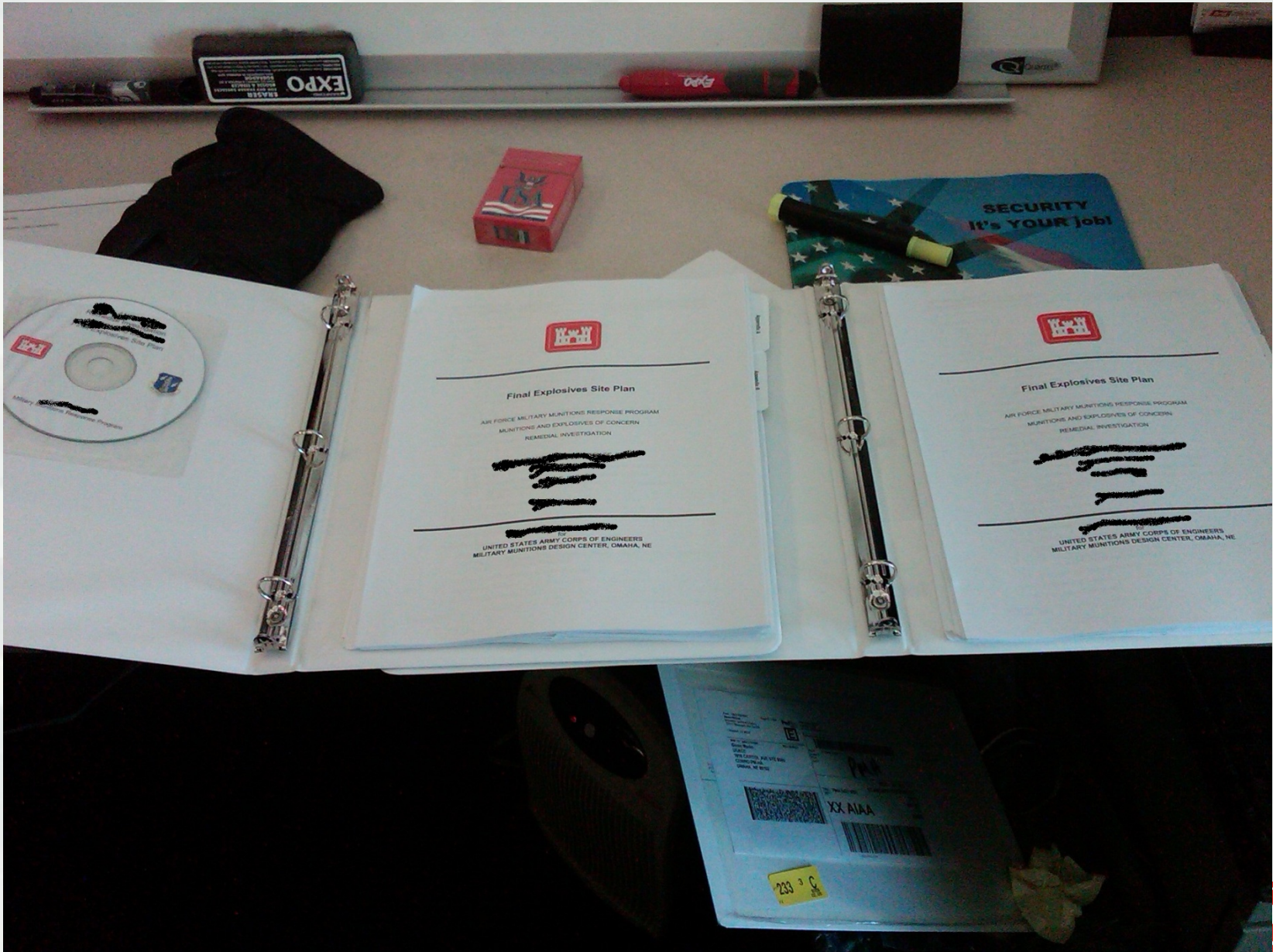


# ***DOING BUSINESS WITH OMAHA MMDC***

## ***Ongoing Contractor Challenges***

- **Limited experienced project managers**
- **Limited experienced technical staff**
- **Poor QA of documents, reports, etc.**
  - **Cut and paste errors**
    - **Reference to wrong installation/site**
    - **Maps to wrong hospitals (different states)**
  - **No overall document QA review resulting in disjointed/confusing reports**
- **Non-authorized communications with customers, regulators, etc.**
- **Taking direction from other than USACE POC**
- **Not thinking for yourself**
- **Reactive, instead of proactive – think ahead**





## ***DOING BUSINESS WITH OMAHA MMDC Ongoing Contractor Challenges (con't)***

- Utilizing cookie cutter technical approaches – every site is different
- Technical approaches that focus on minimizing fieldwork in lieu of leveraging sunk costs and maximizing fieldwork efforts
- Fully understanding explosive safety requirements
- Utilizing correct terminology in documents (i.e. dailies, weeklies, work plans, after action reports, etc.) – i.e. “MEC/DMM”, “potential MEC”, etc.
- Understanding emergency response procedures – procedures are typically similar, but POC’s can vary significantly
- Documenting all field efforts
- “Tell the story”



## Early OE Palm Pilot



# Eglin Air Force Base Military Munitions and MILCON Spt



**BUILDING STRONG®**

# Purpose of the Brief

**1. As a MMRP (Military Munitions Response Program) Design Center, the work at Eglin AFB highlights three different munitions services that the Omaha District provides:**

**a) Conventional clean-up of munitions on former land ranges**

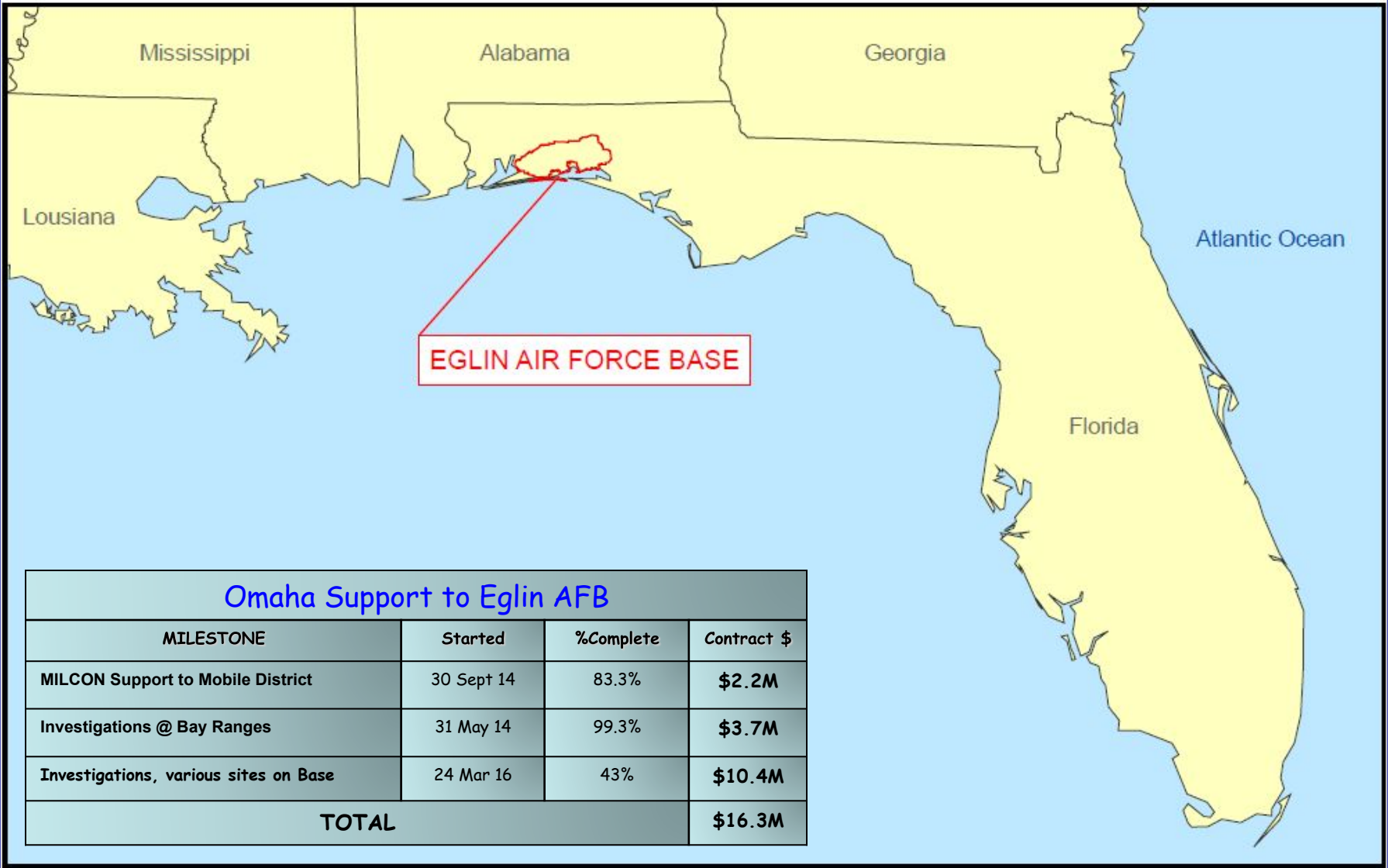
**b) Support to ongoing Military construction on Eglin property on a munitions contaminated site.**

**c) Investigations/cleanup of water ranges in the adjacent bay.**

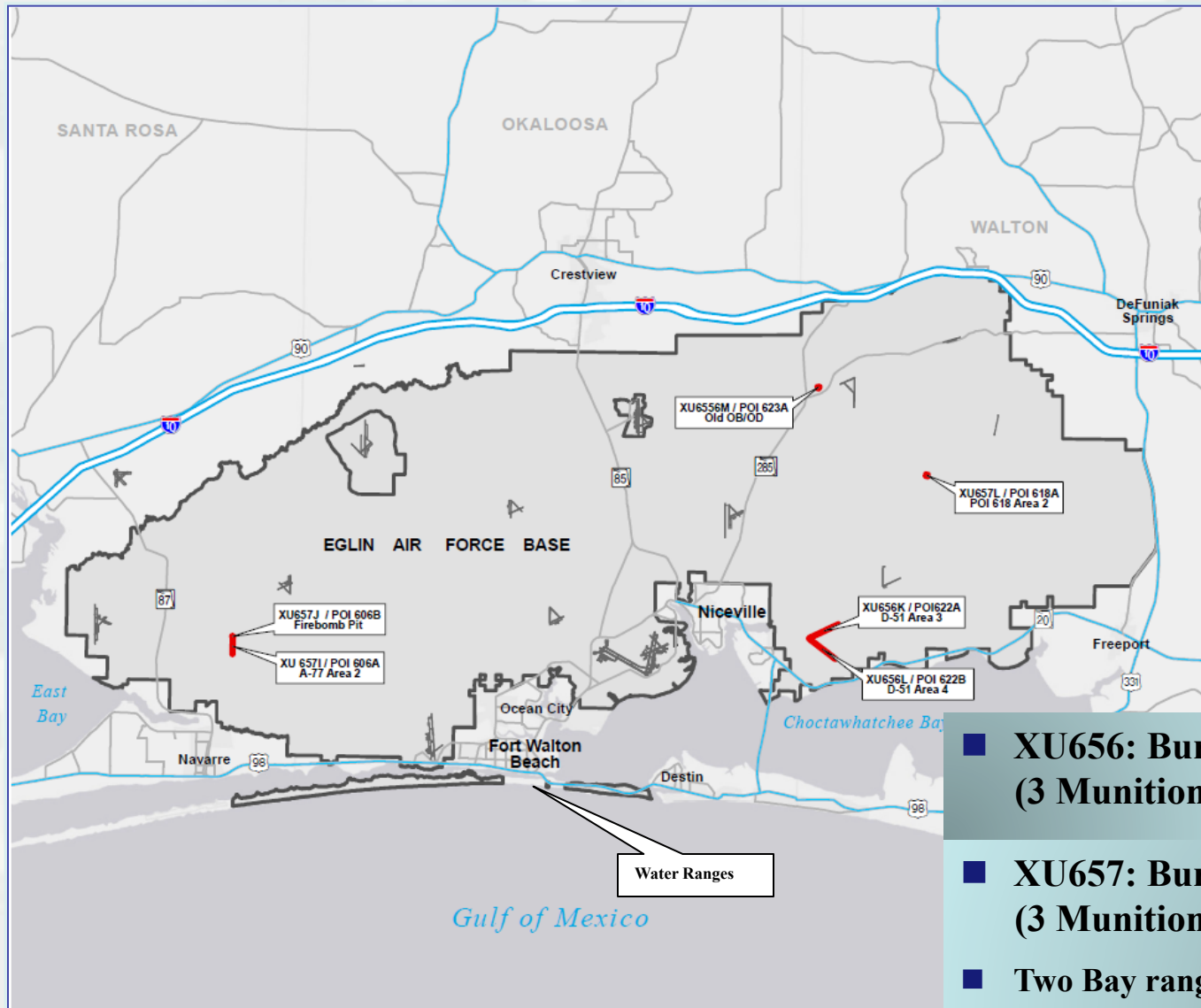


# Eglin Air Force Base

## CSE Phase II & Supp'l Investigations



# Eglin Air Force Base Site Locations





# Eglin Air Force Base

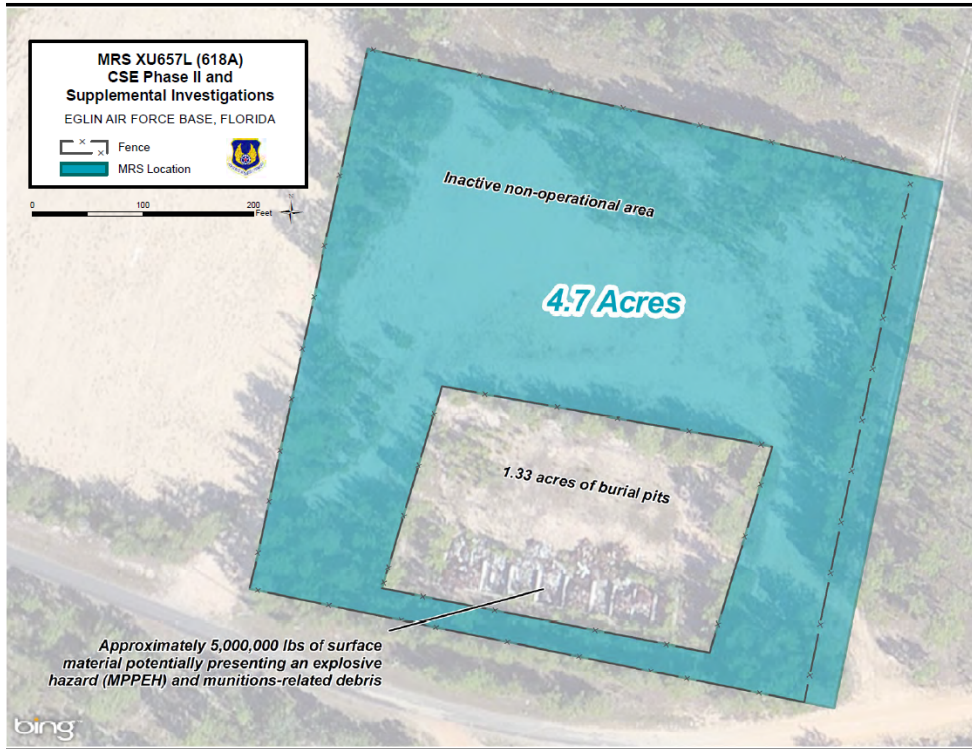
## Site Investigation Summary

- **Awarded \$5.4M to Bay West September 2012 to investigate six MRSs at Eglin AFB, Florida.**
- **Currently 65% complete (not including the recent MOD).**
- **83,620 lbs. of Munitions Debris demilitarized & recycled.**
- **145 MPPEH items have been explosively demilled and certified as explosive free for recycle.**
- **Mod for \$3.2M was awarded on February 2014 to include additional investigation acreage, estimated 5,000,000 lbs. of munitions in concrete bays aboveground.**

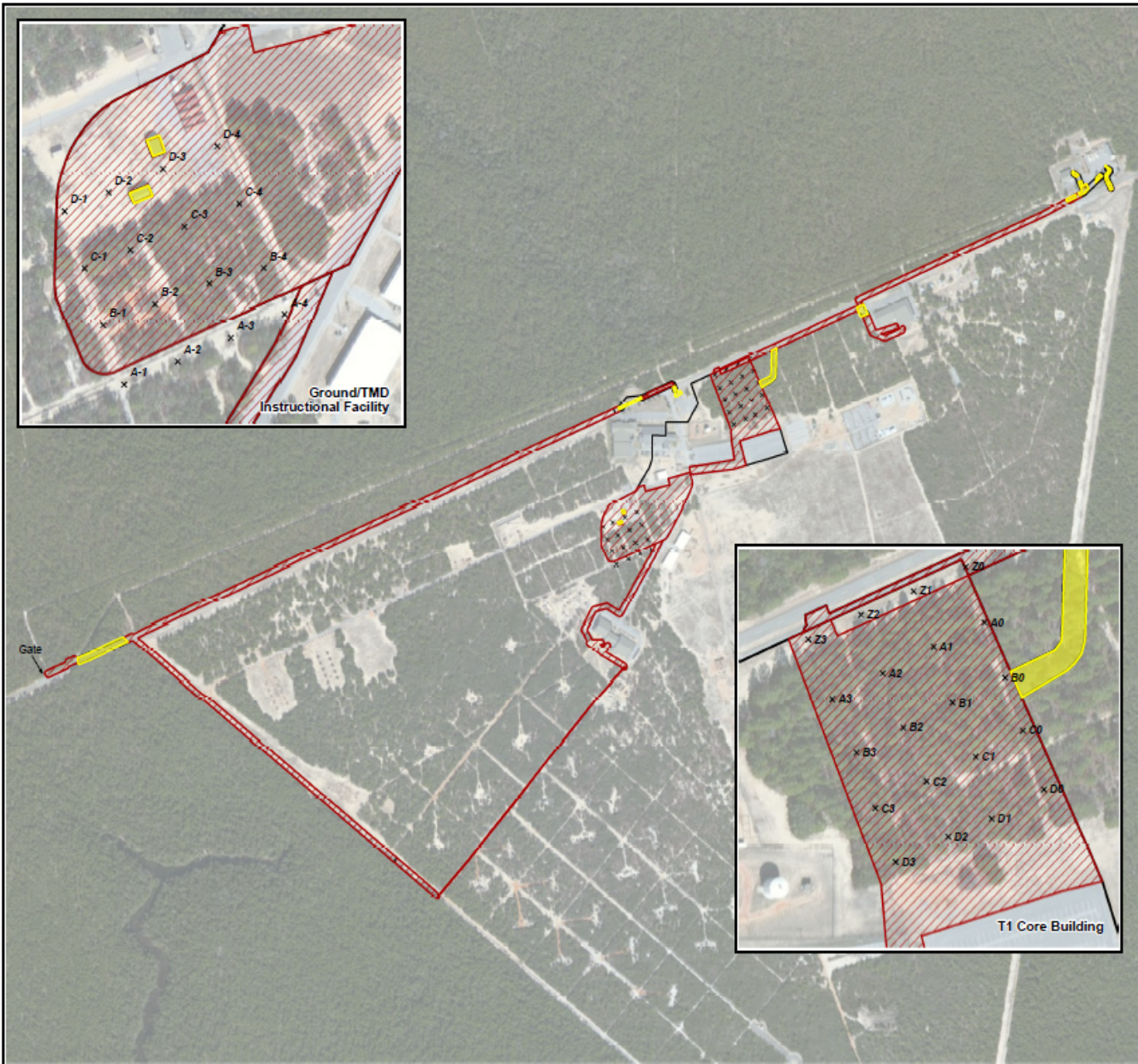


# Eglin AFB



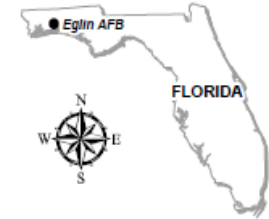


V:\ORION\US\_ARMY\_CORP\_OF\_ENGINEERS\_CMAA\EGlin\_AFB\EOC\_School\_Expansion\MapDocs\EOC\_School\_MEC\_Removal\_Project\_Status\_07OCT13.mxd

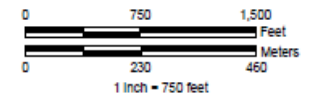





## EOD School MEC Removal Project Status Update\_07OCT13

Eglin Air Force Base, Florida



Map Units: Meters  
Coordinate System: NAD 1983 Florida State Plane North FIPS 0903 Feet  
Basemap: Bing Aerial WMS

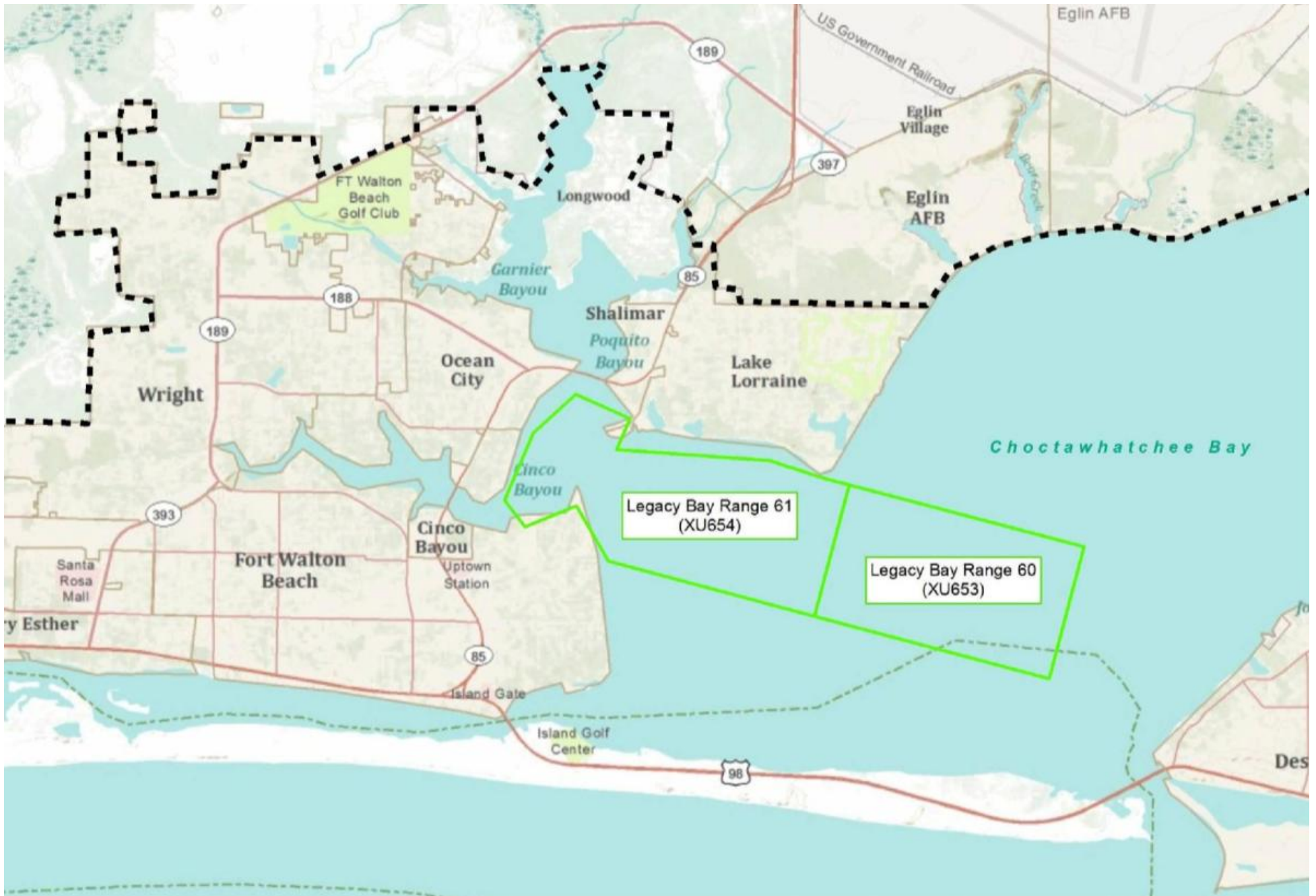


-  Construction Boundary
-  DGM Area - 23.78 Acres
-  Mag & Dig Area - 1.04 Acres

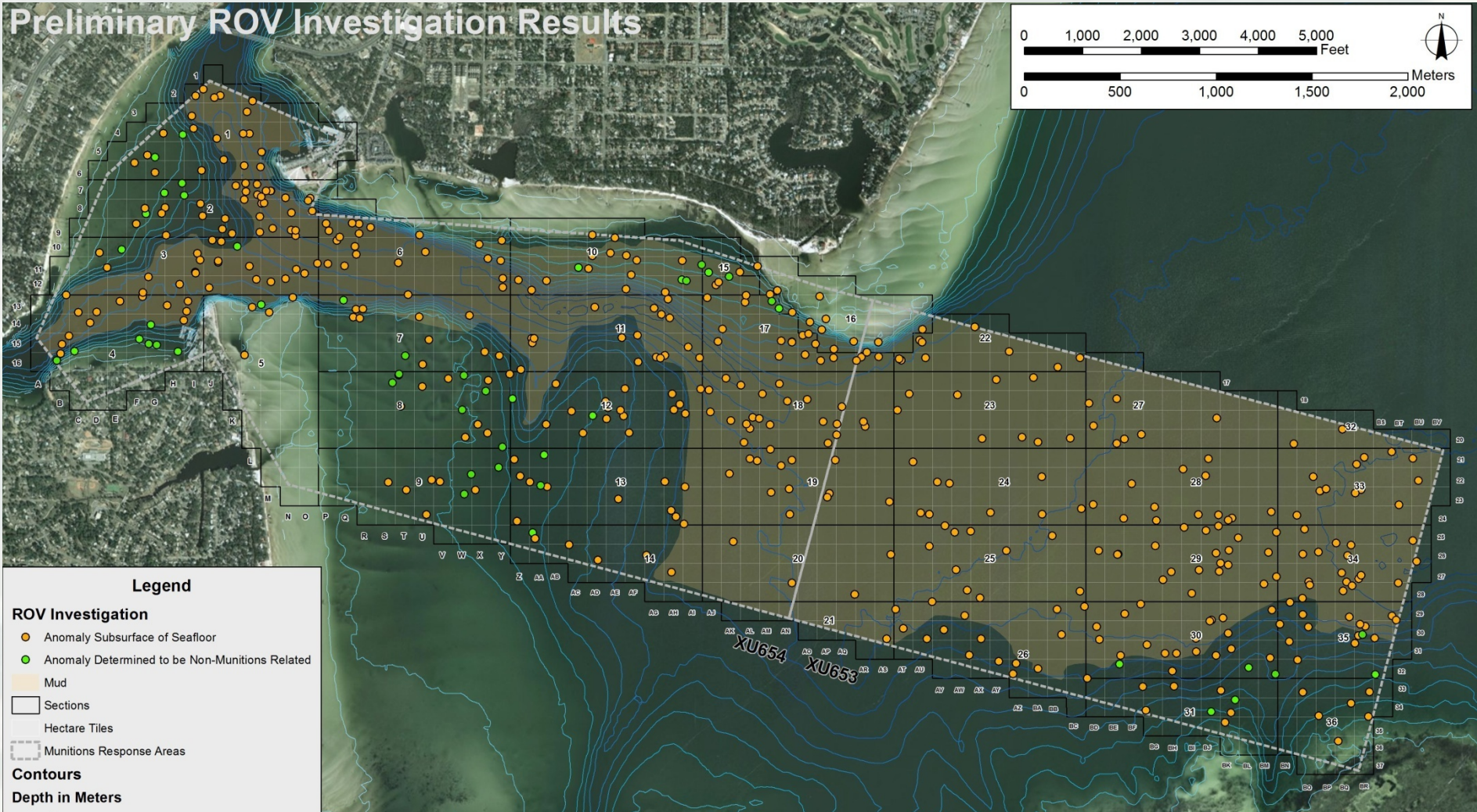
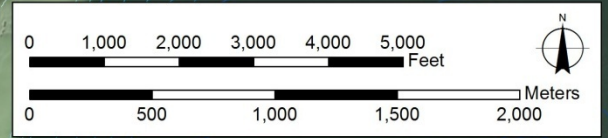


Drawn By: S.G. Date Drawn/Revised: 10/7/2013 Project No. J120542





# Preliminary ROV Investigation Results



**Legend**

**ROV Investigation**

- Anomaly Subsurface of Seafloor
- Anomaly Determined to be Non-Munitions Related
- Mud
- Sections
- Hectare Tiles
- Munitions Response Areas

**Contours**

Depth in Meters



## ■ **Summary of field work**

- ▶ Two Munitions Response Areas (MRA) were investigated
  - Legacy Bay Range 60 (XU653) 1,307 Acres
  - Legacy Bay Range 61 (XU654) 1,582 Acres
  
- ▶ 100% coverage geophysical “Marine Mag” surveys
  - Surveys occurred from Dec 6, 2010 to Aug 25, 2011
  
- ▶ Visual investigation of geophysical anomalies
  - 500 geophysical anomalies investigated
    - 449 anomalies subsurface of seafloor
    - Revisited 105 anomalies for QC purposes
    - 51 anomalies determined to be non-munitions related
  - Visual investigations occurred from May 30, 2012 to Oct 17, 2012



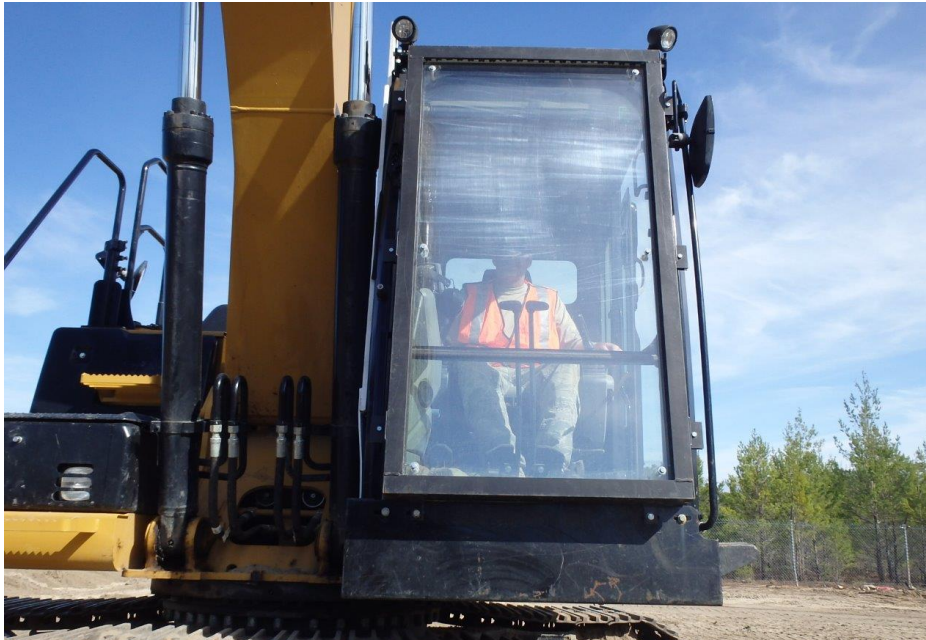




Low-input Mechanized  
MEC Procedure.

equipment used to transport and dump MPPEH  
on table screen.

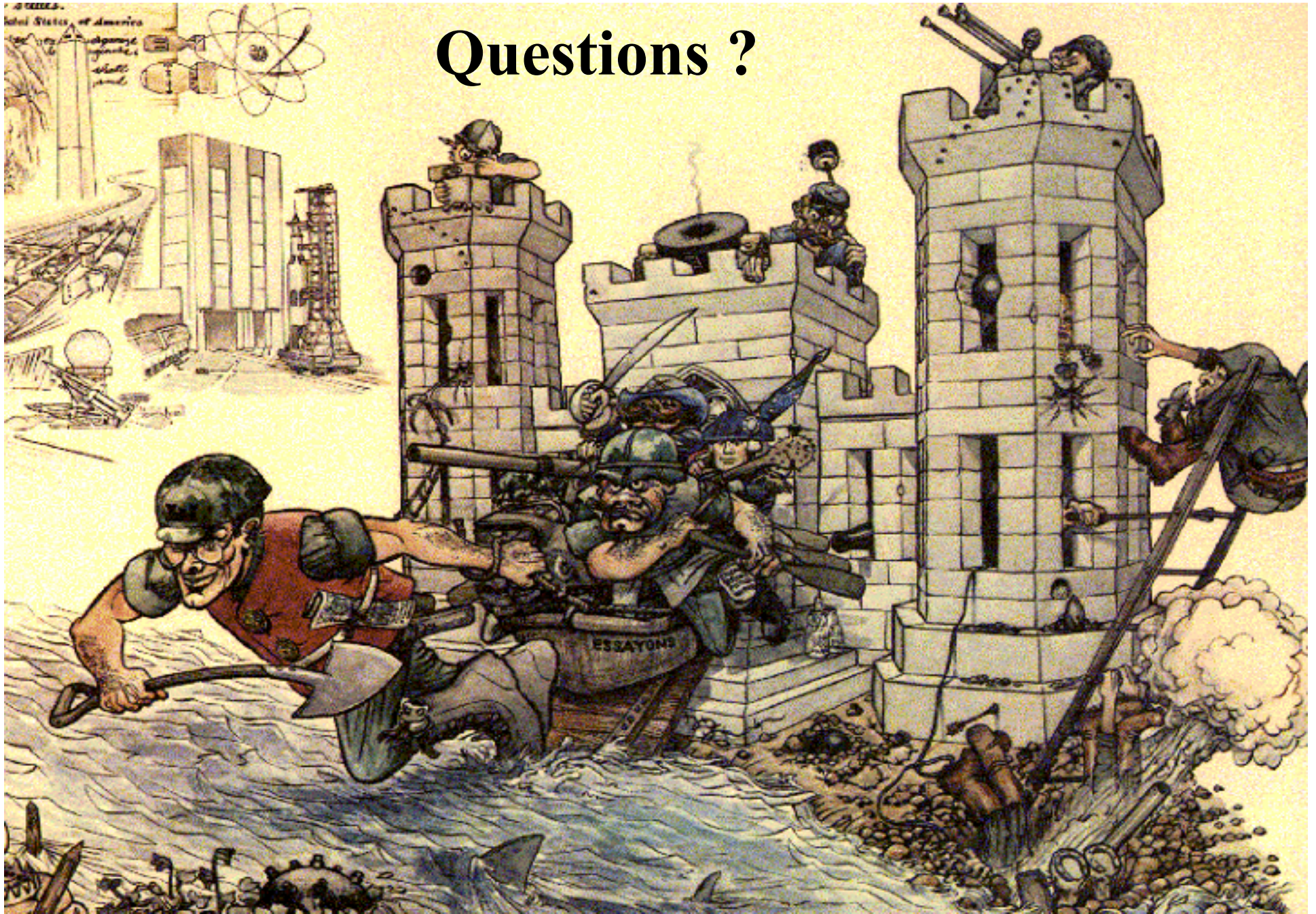




**5/8 inch thick hardened steel plate**



# Questions ?



**The Terrorists have won the toss and  
have elected to receive!**



Bob McCown

