



1

THE CSM IN THE ACQUISITION PROCESS

Using the CSM as a mechanism for Systematic Project Planning and Acquisition from the RI through RA: best practices and data needs for characterization, and contracting

1



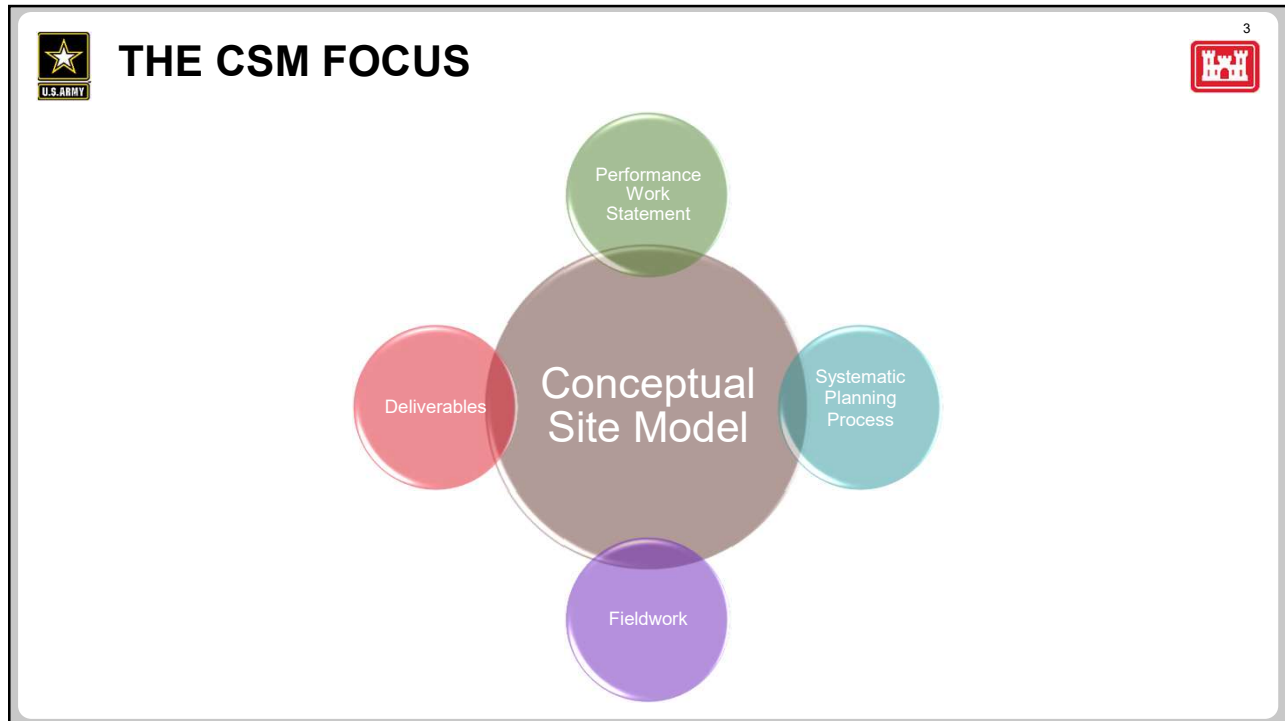
AGENDA



2

- Constraints
- Details Matter
- Early SPP involvement
- Continuous Check on the CSM
- Planning & details in PWS
- Reality Check

2



3

THE ELEPHANT IN THE ROOM

Most ***comprehensive*** technical approach

MAXIMIZES

- DGM acres surveyed
- Intrusive investigations performed
- Samples collected
- Time spent in the field

Need a robust investigation

Most ***cost-competitive*** technical approach

MINIMIZES

- DGM acres surveyed
- Intrusive investigations performed
- Samples collected
- Time spent in the field

USACE uses Best Value, Trade-Off Analysis. The Technical Approach is the most important factor.

4



THE CONSTRAINTS



EXPECTATIONS

- Want high quality product with sufficient data
- Audit trail - AGC
- Money is limited
- Change orders/REAs undesirable

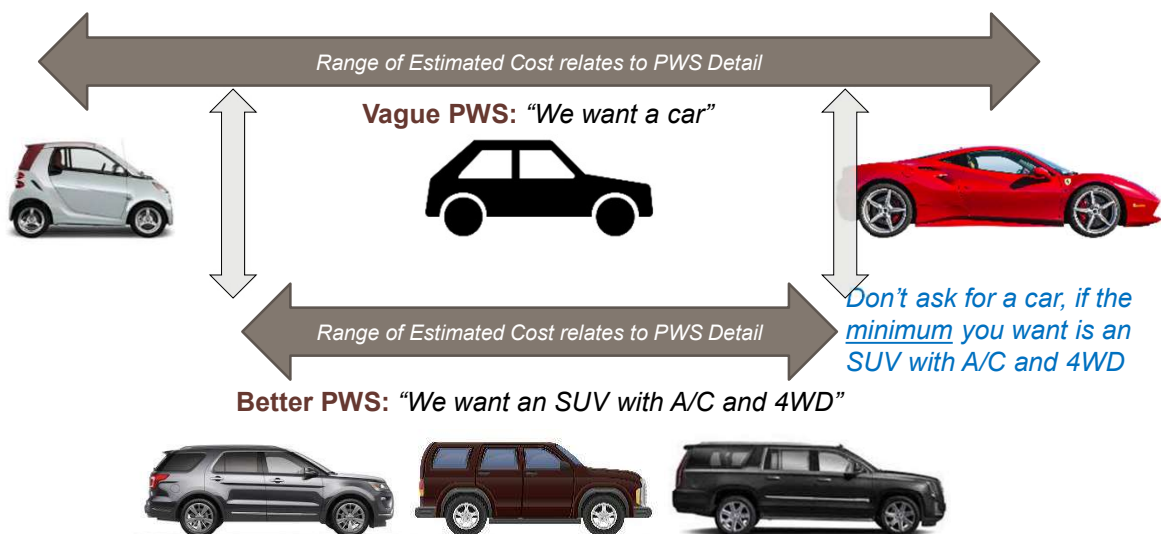
REALITY

- Technical approach requirements subject to broad interpretation
- Limited time to develop complex technical approaches to meet solicitation deadlines
- Can have unknowns before field work
- The “best” technical approach is subjective
- Cost proposals vary widely for field activities

5



PWS DETAILS MATTER



6



SYSTEMATIC PLANNING PROCESS



7

To provide better detail in the PWS, have the Regulators involved early.

Start with the current available data, then as a PDT, talk about the end goals of that phase.

Notate in Worksheet #9.

Planning Session #1 through Preliminary Field Work and Data Analysis					
Project Phase	RFP-Contract Award			Work Plan Preparation	
Generalized PMP Activity	Pre-award Systematic Planning Process		Contract RFP, Evaluation & Award Contract	Post-award Systematic Planning Process	
MR-QAPP Activity	Planning Session #1	Planning Session #2	n/a	Planning Session #3	Planning Session #4
Participants:	LEAD-key; REG	LEAD-key; REG	LEAD-key; KO-OC	LEAD-key; REG; CONTR-key	LEAD-key; REG; CONTR-key
Inputs	All available data	Planning Session #1 Outputs	Planning Session #2 outputs	Planning Session 2 outputs Contractor's Proposal	Planning Session 3 outputs
Activities	Planning Session #1: <ul style="list-style-type: none"> Define Overall Objectives Other Activities: <ul style="list-style-type: none"> Initiate Contract Action Initiate Right-of-Entry actions Initiate Institutional Analysis 	Planning Session #2: <ul style="list-style-type: none"> Site Visit Determine Data Needs Determine Intended Uses of Data Other Activities: <ul style="list-style-type: none"> EM CX Independent Technical Review of Draft PWS Evaluation Criteria, & Independent Government Estimate Initial institutional analysis data/information collection 	<ul style="list-style-type: none"> Finalize PWS Finalize Evaluation Criteria Finalize Independent Government Estimate Site Visit Conduct Source Selection and Evaluation Board Finalize Rights-of-Entry 	Planning Session #3: <ul style="list-style-type: none"> Site Visit Revise & Update DQO Steps #1 through #4 Develop data collection options for Preliminary Characterization, High Density Area Characterization and Low Density/No Evidence of Use Area Characterization Develop Preliminary Sample Design for MC Develop Measurement Performance Criteria Develop preliminary baseline risk assessment strategies Plan for FS Alternatives Development (incl. PRGs) Develop Institutional Analysis Strategy 	Planning Session #4: <ul style="list-style-type: none"> Develop Sample Design for Preliminary Characterization (VSP Planning) Identify preliminary High Density Area Characterization Strategy
Outputs	<ul style="list-style-type: none"> Worksheet 10 CSM (preliminary) Worksheet 11 DQO Steps #1 & #2 Worksheet 9 updated 	<ul style="list-style-type: none"> Worksheet 11 DQO Steps #3 & #4 Worksheet 9 updated Draft PWS Draft Evaluation Draft Independent Government Estimate Draft QASIP 	<ul style="list-style-type: none"> Contract Award 	<ul style="list-style-type: none"> Review/Revise DQO Steps #1-#4 DQO Steps #5 & #6 Measurement Performance Criteria Worksheet 9 updated 	<ul style="list-style-type: none"> VSP Sample Plan for Preliminary Characterization DQO Step #7 Worksheet 17 final for Preliminary Characterization Worksheet 17 draft for High Density, Low Density and No Evidence of Use Area Characterization Worksheet 22 Worksheet 9 updated Draft Final Project QA/PP

Note: Red text indicates an activity that includes contracting (KO or COR)

7



CSM COMPONENTS – PROFILES TO ADDRESS



8

Facility Profile

- Site history, site boundaries, man-made features, and potential contaminant sources

Physical Profile

- Natural factors that may affect contaminant release, fate and transport, or accessibility

Release Profile

- Types of contaminants
- Known/suspected locations of MEC or MC

Land Use and Exposure Profile

- Land uses and activities
- Exposure scenarios
 - Receptors, receptor locations, and pathways


Ecological and Cultural Resources Profile

- Natural habitats and ecological receptors
- Cultural resources


Vertical Profile



8

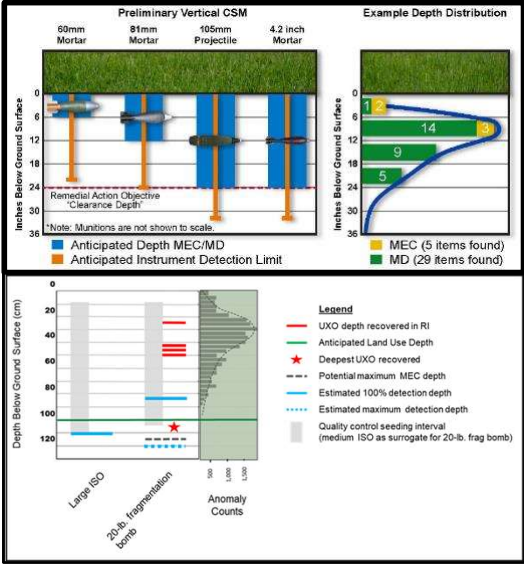


VERTICAL PROFILE FOR ACQUISITION




The vertical profile is critical for planning your PWS.


- MEC & Seeding depths
- Production Rates
- Instrument detection depths
- What instruments to use
- Land use depths
- Planning for the future
- RAO depths
- FS & RODs



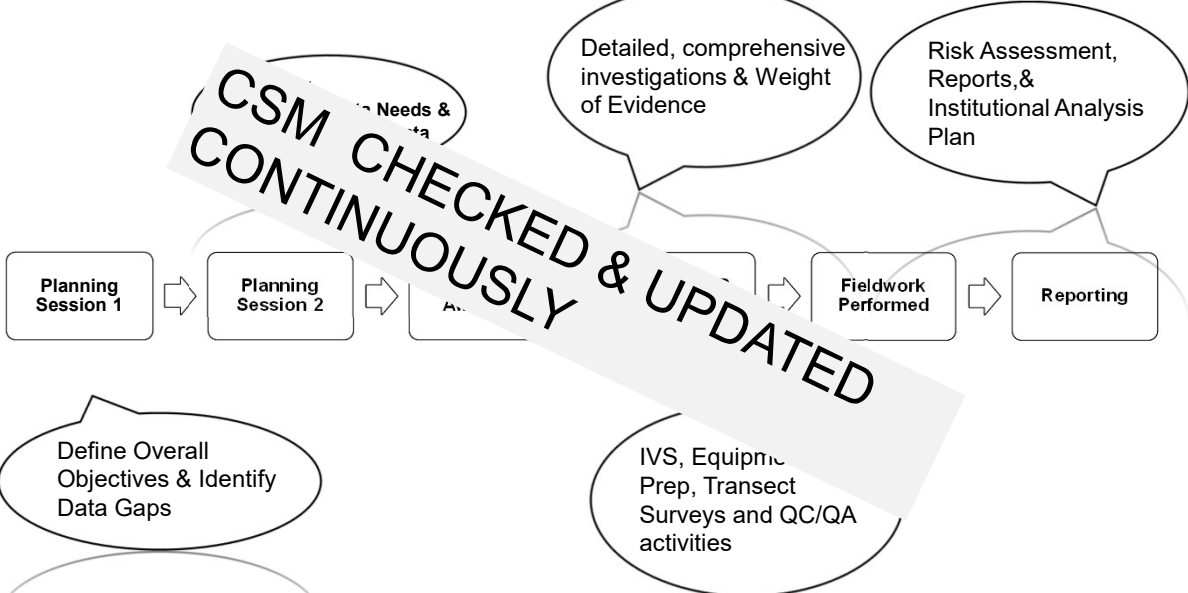
9



CONTINUOUS CHECK ON THE CSM



CSM CHECKED & UPDATED CONTINUOUSLY



10



STRUCTURE THE PWS WITH FLEXIBILITY

11



Include lots of options for fieldwork

Include phased approaches for data gaps

Phase 1RA – map known areas and 100% of the site with dynamic AGC

Phase 2RA – map the remaining data gaps, dig and report

Include additional FUP task in addition to the base

If we want something prescriptive – then ask

11



DO THEY MATCH?

12



Performance Work Statement

- Remove 60mm HE and practice mortars to 60cm bgs across the 46-acre remedial footprint with the exceptions for inaccessible areas including under trees greater than 20 cm in diameter ABH and under the existing building foundation
- Perform digital geophysical surveys...AGC..DAGCAP-accredited GCO.
- "Following implementation of the selected remedy, it is anticipated that all the MEC within the 60cm volume of searched soil within the Mortar Range MRS will be treated via disposal."
- Install 6 safety posters on the trailheads with the 3Rs, provide 2,000 brochures for the park personnel to hand out and provide training to the Park Personnel that they may conduct 3Rs briefings.

Regulators

- Digital Geophysical Survey for 100% of the investigation
- AGC equipment
- What's DAGCAP accredited personnel
- Clearance of trees less than 20 cm ABH – assuming 10 acres with T&E species and critical habitat
- Key personnel needed include a Biologist
- Install 6 safety posters on the trailheads with the 3Rs, provide 2,000 brochures for the park personnel to hand out
- What does provide training to the Park Personnel that they may conduct 3Rs briefings mean?

Proposals

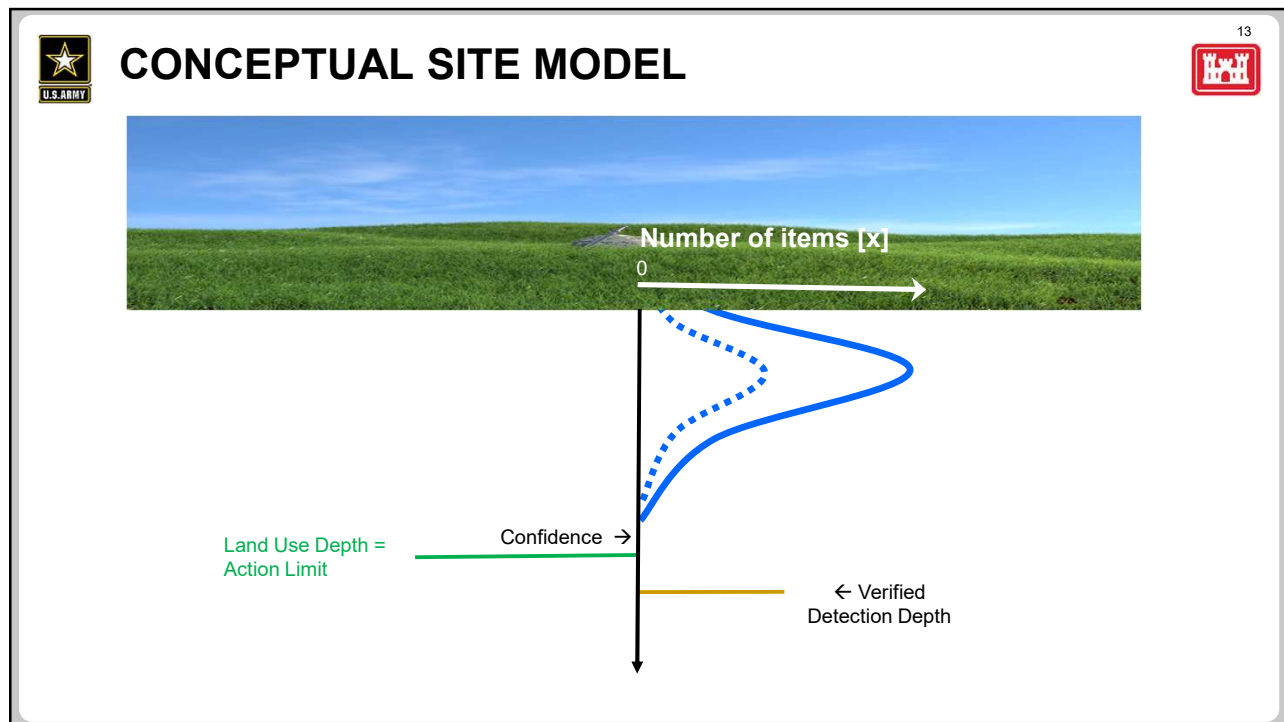
- Digital Geophysical Survey for 85% of the investigation
- AGC equipment
- DAGCAP accredited personnel
- Clearance of trees less than 20 cm ABH – assuming 20 acres
- Key personnel added are Biologist and Archeologist – The technical proposal notes both T&E and archeological concerns in the MRS.
- Install 6 safety posters on the trailheads with the 3Rs, provide 2,000 brochures for the park personnel to hand out

Actual



- Digital Geophysical Survey for 90% of the investigation
- AGC equipment
- DAPCAP accredited personnel
- Clearance of trees less than 20 cm ABH amounted to 15 acres
- MR-QAPP and Fieldwork were conducted to monitor T&E
- Biologist needed but not Archeologist
- Install 10 safety posters on the trailheads with the 3Rs, provide 3,000 brochures for the park personnel to hand out and pulled 3Rs training from Denix (<https://3Rs.mil>) to provide to the Park Personnel that they may conduct 3Rs briefings.

3/21/2022

12



13

 **WRAP UP - PLAN FOR THE PWS DETAILS**  14

- Plan a site visit early ahead of the solicitation
- Plan early and continuous for those Rights of Entry (ROEs)
- Regulators and Stakeholders need buy in at the initial meeting
- Discuss key personnel that will be needed for the project ahead of award
- Discuss coverage, terrain and sampling
- Discuss the WoE for No Evidence of Use areas
- Plan a site visit for the contractors
- Ensure those requirements are transcribed in the PWS and Worksheets

14



Questions?