

Plan2Fund: A Tool to Organize Your Watershed Funding



*Bill Jarocki
Environmental Finance Center
Boise State University*

*Amy Williams
Environmental Finance Center
Boise State University*

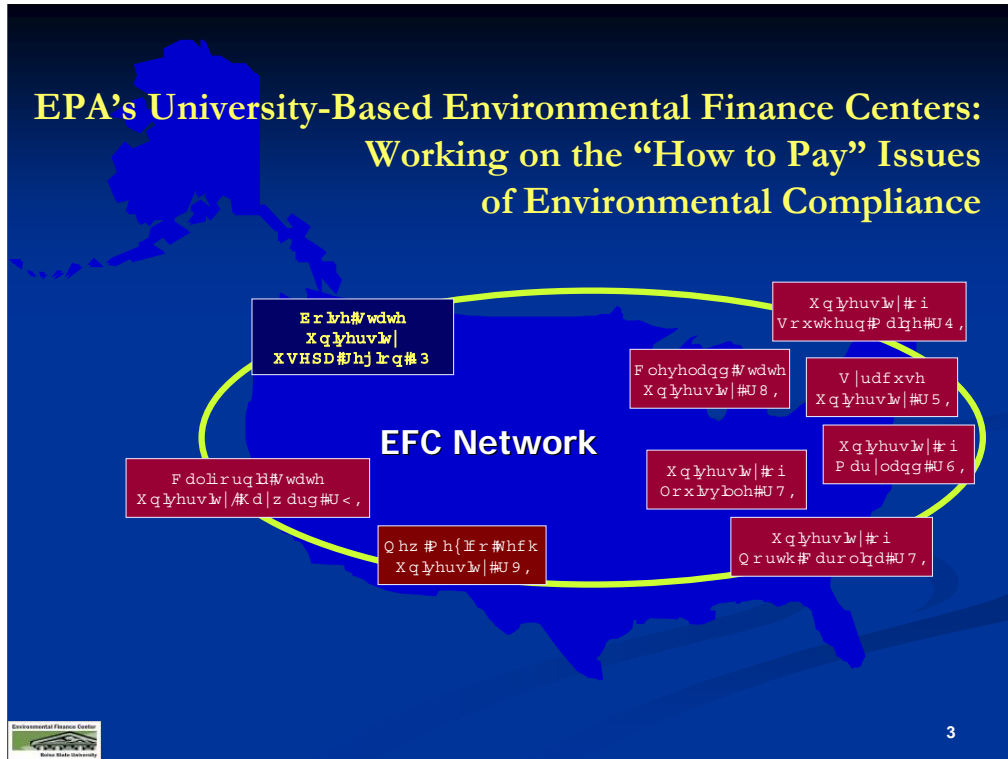
*Lee Napier
Grays Harbor County
Chehalis Basin Partnership*



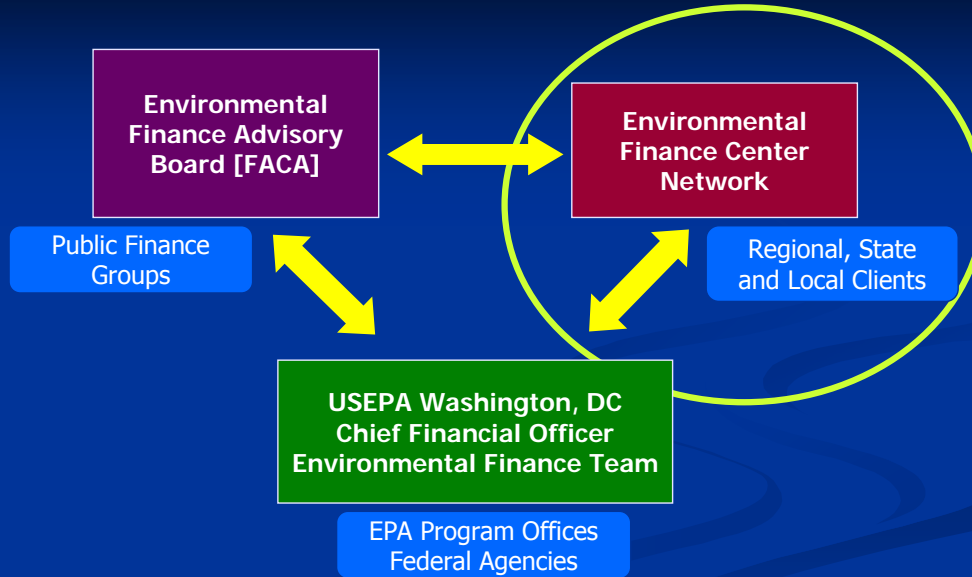
Environmental Finance Center at Boise State University



EPA's University-Based Environmental Finance Centers: Working on the "How to Pay" Issues of Environmental Compliance



EPA Environmental Finance Partners



Mission:

- The mission of the Environmental Finance Center at Boise State is to provide help to those facing the *"how to pay"* challenges of environmental protection.
- EFC-10 is committed to helping communities build and improve the technical, managerial, and financial capabilities needed to comply with federal and state environmental protection laws.

Macro and Micro Environmental Finance



Macro - EF

Watershed Finance
Regionally Oriented
Non-Point Source

Micro - EF

Utility Finance
Community Oriented
Point Source

Micro – Environmental Finance Programs

Utility Rate Setting Training and Technical Assistance
RateCheckup™

Infrastructure Financing Assistance
Alternative Financing Methods
Guidebook of Financing Tools

Management and Financial Capacity Tools
Idaho DW Handbook for Board Members
Kansas, Washington budgeting tools

Utility Asset Inventory and Replacement Financing
CAPFinance™

CWSRF/DWSRF Financial and Management Capacity
Reviews (Idaho, Alaska and *Washington in 2004*)

Brownfields Project Assistance

SDWA Implementation: TFM Strategies and Tools

Macro – Environmental Finance Programs

Watershed Financing Workshops

DIRECTORY OF WATERSHED RESOURCES (Web-Based)

Watershed Funding Interactive Database - included Region 10
and Region 1 Region data and Replicated for Region 4 by
University of North Carolina

Strategic Planning for Watershed Improvements

Plan2Fund™

Lower Boise River Pollution Trading Project

Watershed Financing Assistance

Alternative Financing Methods

Guidebook of Financing Tools

Prioritization Tool – Chehalis Model

Brownfields Project Assistance

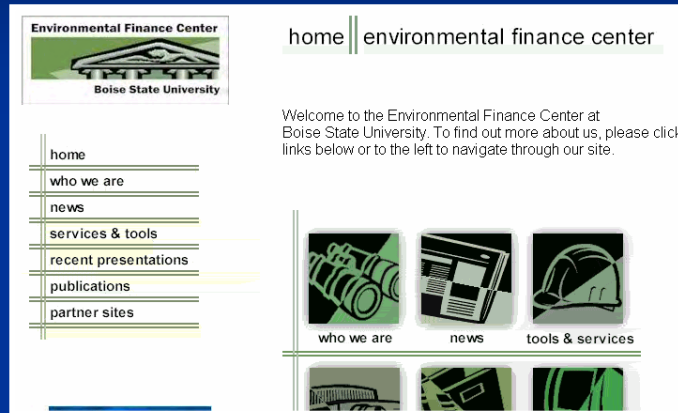
Community Charrettes: Jerome, ID; Pocatello, ID; Newberg, OR;

Siletz Tribe, OR; Chiloquin, OR

Agency Charrettes: Lower Boise Watershed Stakeholders,
EPA Region10



Building Financial & Management Capacity Through Research, Training and Assistance



<http://sspa.boisestate.edu/efc>

This is what we've learned...

In pure public finance terms, watershed funding is one of the most difficult funding challenges.

This is because cost, organizational, intergovernmental and time factors are more complex in watershed restoration than in any other environmental finance setting.

If this is so...

Recognize that there never has been, nor will there ever be, enough public funding available to get the job done.

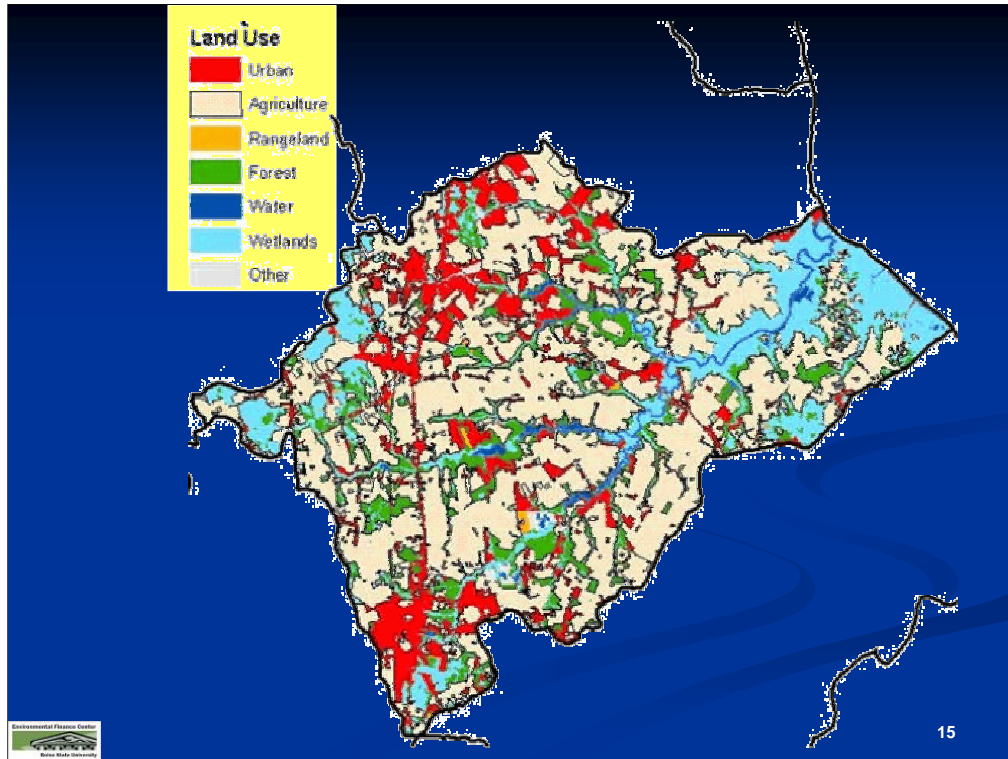
Utilize the existing watershed framework to create a funding strategy that uses the skills and strengths of stakeholders, in coordination with multiple funding sources, to realize implementation of plans and reach objectives.

Financing Watershed Restoration with a “Community Quilt”



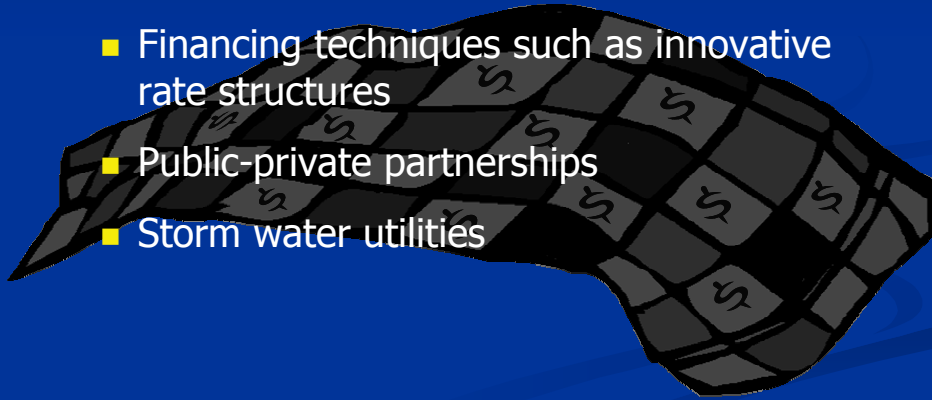
“Community Quilt” concept of financing

- The Watershed is a Mosaic of public, private and nonprofit land ownership and a myriad land uses.
- Using a broader collection of terms can broaden the sources of funding for your source water protection plan.
- Identify land owners and land uses within a watershed to create a patchwork of funding opportunities.



Creating the Quilt

- Federal, State and Local programs *plus*
- Financing techniques such as innovative rate structures
- Public-private partnerships
- Storm water utilities



Each land use and activity has different funding options.



Forest Stewardship Program
Forest Legacy Program
American Forest Foundations



Community Development Block Grants
Greenspaces Program
Alaska Conservation Foundation
Sustainable community grants



EQUIP
Alaska Commercial Fishing and Agriculture Bank
319 Non Point Source Grants

A Holistic approach...

Broad-based sources of funding leads to broad-based support for your objectives

Think creatively about issues related to finance.

Create a visionary strategic funding plan that relies on diverse sources of funding.

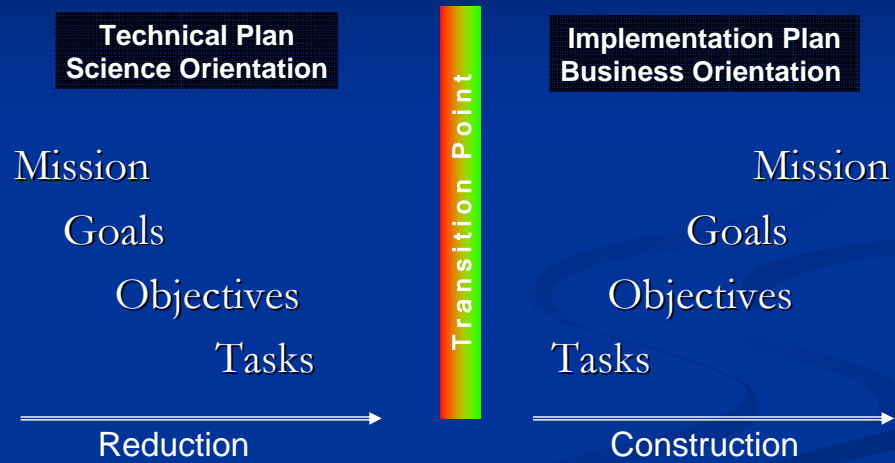
Questions



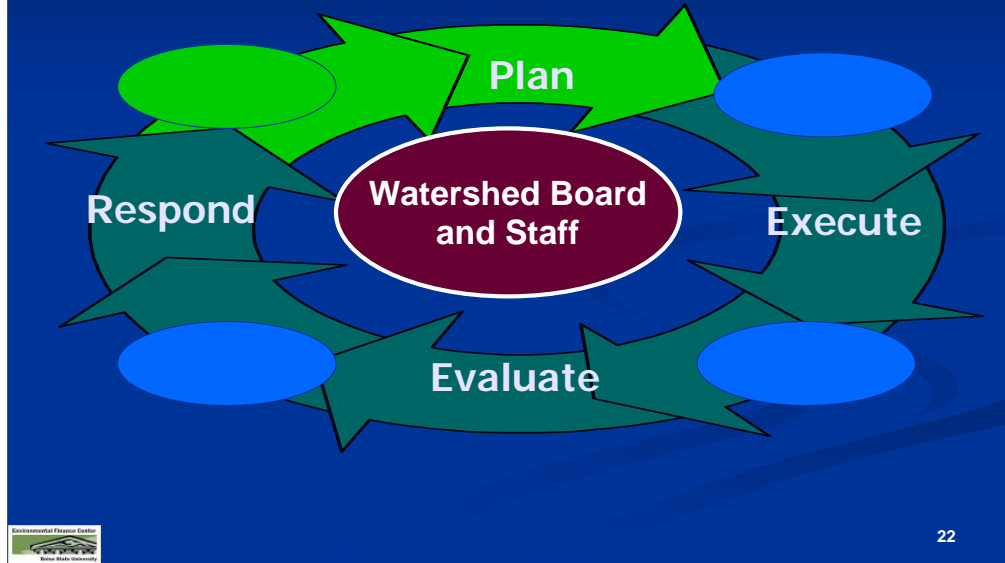
What are the tools for developing a strategic funding strategy?

- Plan2Fund
- Prioritization Tool
- Funding Sources and Financing Techniques
 - Guidebook of Financial Tools
 - Directory of Watershed Resources, Catalog of Federal Funding for Watershed Protection and other databases

Planning to Implementation Transition



Using the Business Cycle Model to Turn the Watershed Plan into Reality

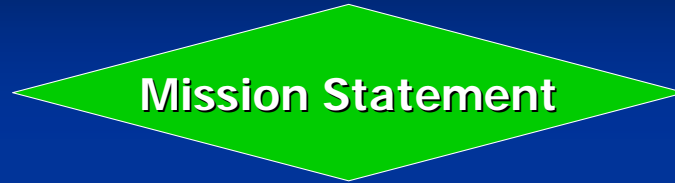


- Planning: Where do we want to go?
 How do we compare to peers?
 What is the impact of these decisions?
- Budget: What do we have to do?
 Can we achieve the targets?
 How do we allocate resources?
- Report: Where are we?
 How are we doing compared to the plan?
 What actually happened?
- Analysis: What decisions do we make?
 What are the alternatives?
 Why did it happen?

Turning the Plan into a Budget

- The planning process identifies goals, objectives and tasks for the next year and future years
- Priorities are then established
- Each task requires resources
- The budget is the roadmap for how resources will be acquired and used

Watershed Planning: Using the Classical Planning Process



As we move from Mission to Goals - and then to Objectives - more specific information is revealed that is essential for implementation...

Mission Statement

Goal

Goal

Goal

Objective

Objective

Objective

Objective

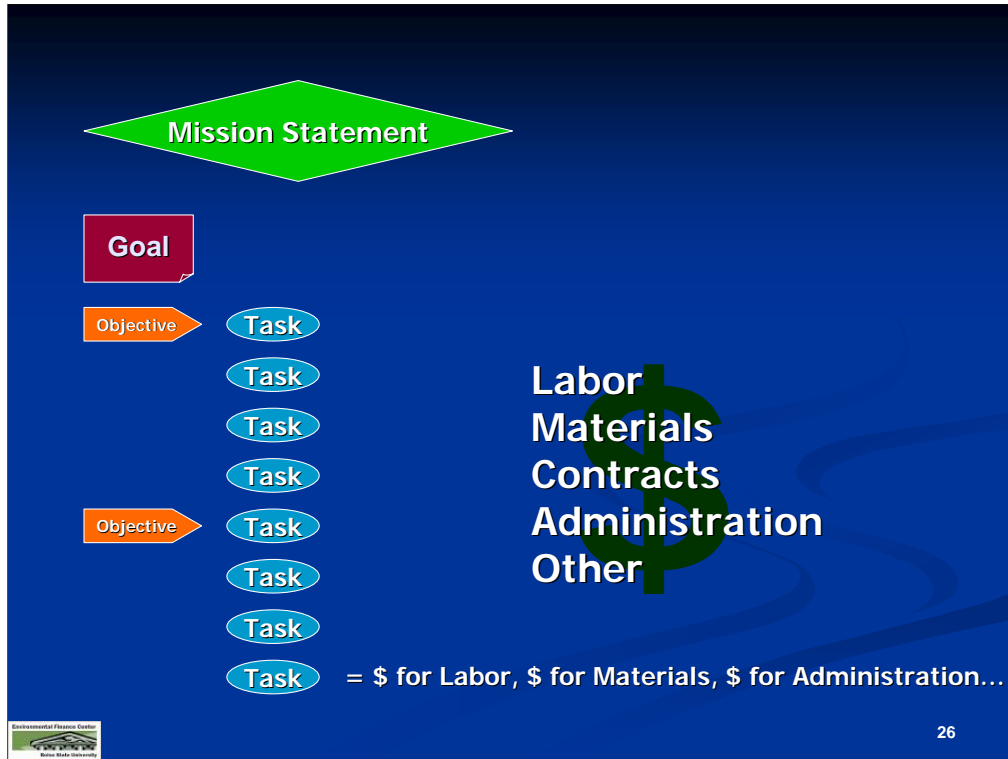
Objective

Objective

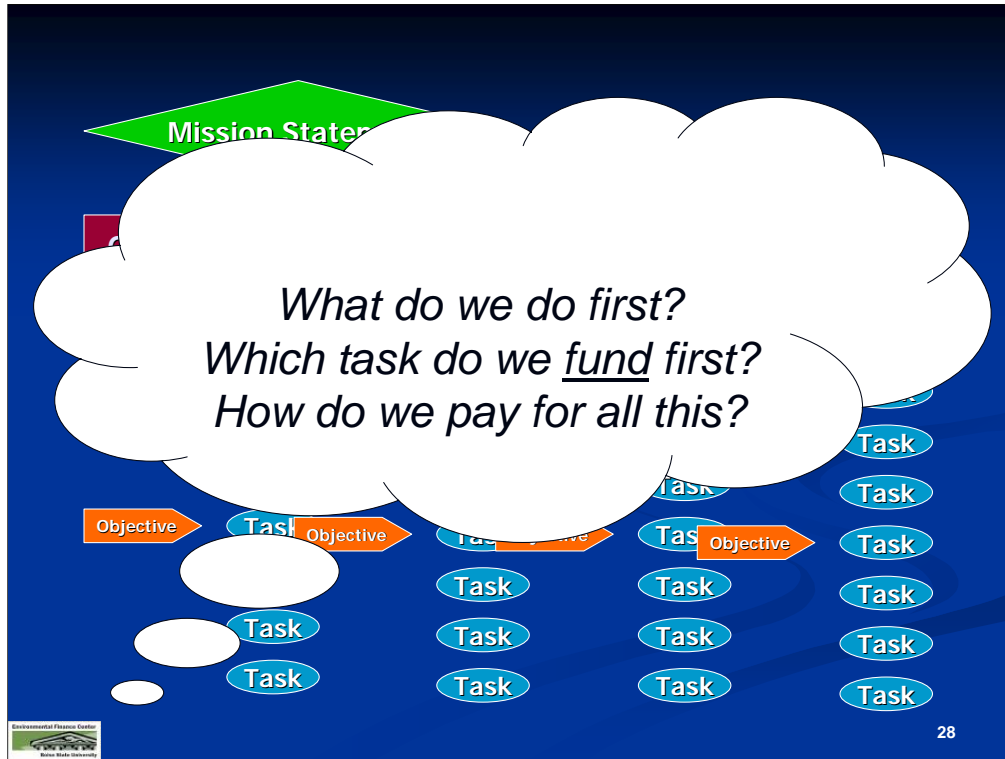
Objective

Objective

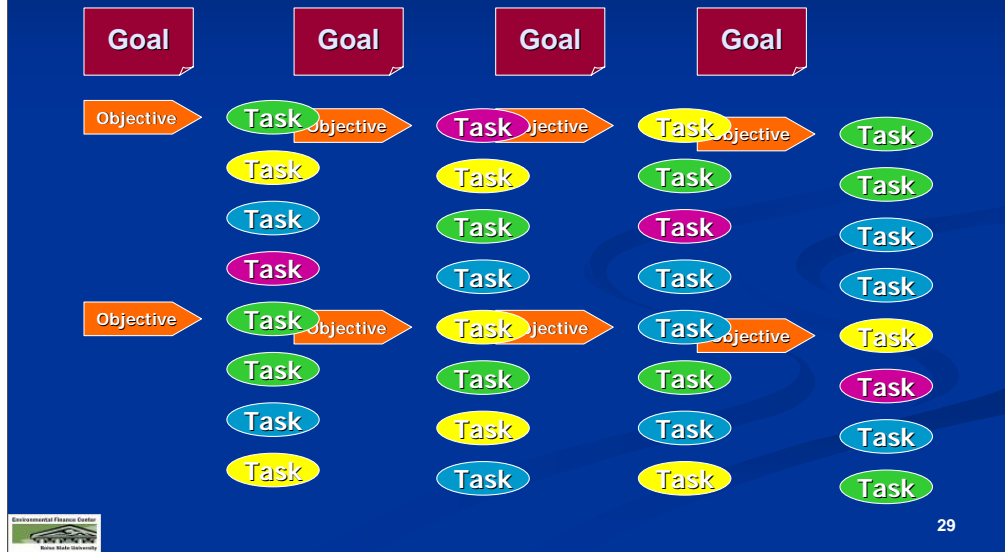
Objective







Since tasks can't be accomplished simultaneously,
tasks should be assigned to different years...





Questions



Demonstrate Plan2Fund™



Plan2Fund 2.0 [Open Data Source]

Please specify the location of the data file you want to open.

C:\

- Program Files
- Plan2Fund
- Database

Plan2Fund_Blank.mdb
Plan2Fund_Example.mdb

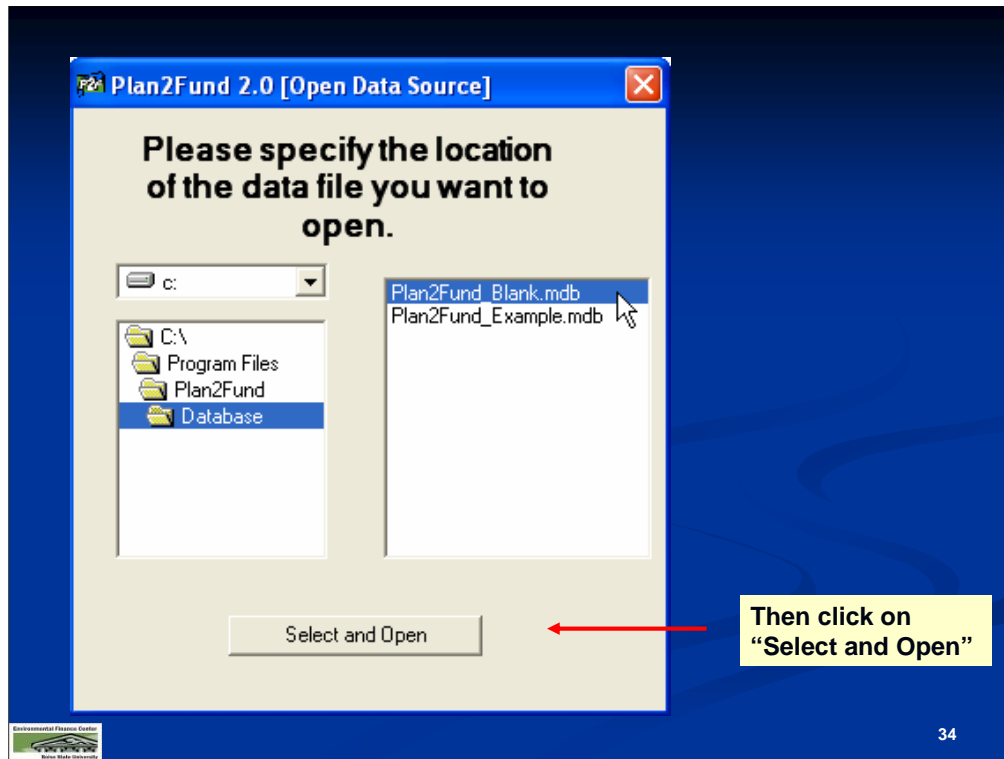
Select and Open

When you open Plan2Fund, the Data Source screen will appear.

Highlight the Database you would like to open.

Environmental Planning Center
Baylor State University

33





PLANNING AND BUDGETING DATABASE

- [Input Program Planning Data](#)
- [Input Task Financial Information](#)
- [Contact List](#)
- [Report Menu](#)

Quit



To enter your program planning data, click on "Input Program Planning Data".



Plan2Fund 2.0 - [Program Goals]

File Help

Plan2Fund

Program Name:

Type of Organization:

Location:

Program Focus:

Mission Statement:

Goals:

List the Goals for the Program. When a Goal has been completed check (click) the "Complete" box.
Note: For record options, "Right-Click" to the left of the Goal Number field.

Goal No.	Description of Goal	Complete

After entering all the Goals, hit the "Go to Objective Input" button to input Objectives for each Goal.

Go To Objective Input

Return to Plan2Fund Main Page

Environmental Planning Center
Baylor State University

36

Each screen in Plan2Fund has a help file located at the top of the screen. Click on 'Help' for information about using Plan2Fund.

Plan2Fund Help

Hide

Back

Print

Options

Plan2Fund

Open Data File

Main Screen

Input Program Planning Data

Input Goals

Input Objectives

Input Tasks

Input Task Financial Information

Contact List

Report Menu

Plan2Fund - Plan2Fund - Program Goals

Program Goals

Program Name:

Type of Organization:

Location:

Program Focus:

Mission Statement:

Goals

Goal No.

Description of Goal

Complete

1

Goal 1

☐

2

Goal 2

☐

3

Goal 3

☐

4

Goal 4

☐

5

Goal 5

☐

6

Goal 6

☐

Save

Reset

After entering all the Goals in the table, click on the "Save" button to save the data. You can also click on the "Reset" button to reset the data.

Go To Objectives Input

Return to Plan2Fund Main Page

The help file brings up information for the screen you are working on as well as a table of contents that can be used to locate information for other sections of Plan2Fund.

PROGRAM GOALS FORM

This form allows users to enter program information, mission statement and goals for the program.

Entering Program information

When data is entered into a field, the *Save* and *Reset* buttons will appear. To save the data click *Save*, or to undo the input or changes click *Reset*.

Entering Goals

Enter a Goal Number and a description for each Goal.

Environmental Planning Center

Brown State University

37

37

Program Goals

Plan2Fund

Program Name:

Type of Organization:

Location:

Program Focus:

Mission Statement:

Goals:

List the Goals for the Program. When a Goal has been completed check (click) the "Complete" box.
Note: For record options, "Right-Click" to the left of the Goal Number field.

Goal No.	Description of Goal	Complete
1	Reduce nonpoint source pollution from agricultural practices for improved water quality in the Blue River Basin	<input type="checkbox"/>
2	Protect and restore habitat for key ecological functions, target species, and biological communities in the Blue River Basin	<input type="checkbox"/>
3	Improve infrastructure and stormwater systems to reduce point source pollution for improved water quality in the Blue River Basin.	<input type="checkbox"/>
4	Monitor and assess watershed conditions and trends over time to gather missing data for decision making and ensure watershed plan goals and infrastructure are met	<input type="checkbox"/>
	<input type="text"/>	<input type="checkbox"/>

After entering all the Goals, hit the "Go to Objective Input" button to input Objectives for each Goal.

Go To Objective Input

Return to Plan2Fund Main Page

Enter program information including program name, location and mission statement.

Enter Goals

Once all goals have been entered, click on "Go to Objective Input" to enter objective information.

Environmental Planning Center
 Boise State University

38

Objectives for Goals

Goal: 1

Reduce nonpoint source pollution from agricultural practices for improved water quality in the Blue River Basin

List all the Objectives for this Goal below:

When an Objective is complete, check it's "Complete" box. If you make a change to an objective you need to click "Save" to save it.

Objectives: *Note: For record options, "Right Click" to the left of the Objective Number field.*

Objective No.	Description of Objective	Complete
1	Increase use of agricultural Best Management Practices for nutrient reduction and fertilizer use on crop land by 25%.	<input type="checkbox"/>
2	Protect 3 miles of critical stream segments to reduce erosion and enhance habitat.	<input type="checkbox"/>
		<input type="checkbox"/>

Back to Previous Goal

Go To Next Goal

After listing All Objectives and prioritizing them, it's time to enter the tasks for each Objective.

Go to Task Input

Back to Watershed Program Goals

Return to Plan2Fund Main Page

Enter the objectives for each goal.

When the objectives for that goal has been entered, Click on "Go to Next Goal" to move to the next goal.

Environmental Planning Center

39

Objectives for Goals

Goal: 2

Protect and restore habitat for key ecological functions, target species, and biological communities in the Blue River Basin

The next goal will appear at the top of the page

List all the Objectives for this Goal below:

When an Objective is complete, check it's "Complete" box. If you make a change to an objective you need to click "Save" to save it.

Objectives: *Note: For record options: "Right Click" to the left of the Objective Number field.*

Objective No.	Description of Objective	Complete
1	Decrease fish mortality by 10% by improving fish access within the Blue River Basin through removal of barriers and installing culverts.	<input type="checkbox"/>
2	Construct 10 acres of wetlands along critical areas to reduce pollution, improve habitat, and reduce flooding in populated downstream areas.	<input type="checkbox"/>

Back to Previous Goal

Go To Next Goal

Enter the objectives for the goal.

After listing All Objectives and prioritizing them, it's time to enter the tasks for each Objective.

Go to Task Input

Back to Watershed Program Goals

Return to Plan2Fund Main Page

Once all the objectives have been entered for all the goals, click on "Go to Task Input" to enter the task information.

40

Tasks for Objectives

Goal: 1

Reduce nonpoint source pollution from agricultural practices for improved water quality in the Blue River Basin

Objective: 1

Increase use of agricultural Best Management Practices for nutrient reduction and fertilizer use on cropland by 25%.

Back to Previous Objective

Go to Next Objective

The Goals and Objectives will appear at the top of the page

List each Task for this Objective below.

Tasks: *Note: For record options, right click to the left of the task number.*

Task Number	Task Description	Responsible Entity	Start Year
1	Provide one workshop on proper chemical handling and application.	King, Seth	2005
2	Distribute flyers to farmers and livestock operators addressing BMPs for nutrient reduction on cropland and livestock facilities. Provide information on financial incentives for implementation of BMPs.	Carroll, Gary	2006
		Select	

After listing all Tasks for all Objective, it's time to prioritize your Tasks. Click on the "Prioritize Tasks" button at the right.

Prioritize Tasks

Back to Objective Input

Return to Plan2Fund Main Page

Enter the task description, responsible entity and start year for each objective of each goal.

Click "Go to Next Objective" to move to the next objective.

Environmental Planning Center

Baylor State University

41

41

Tasks for Objectives

Goal: 1

Reduce nonpoint source pollution from agricultural practices for improved water quality in the Blue River Basin

Objective: 2

Protect 3 miles of critical stream segments to reduce erosion and enhance habitat.

Back to Previous Objective

Go to Next Objective

List each Task for this Objective below.

Tasks: *Note: For record options, right click to the left of the task number.*

Task Number	Task Description	Responsible Entity	Start Year
3	Work with willing landowners to install fencing along 50 acres of critical stream bank.	Jim Seft	2006
		Select	

After listing all Tasks for all Objective, it's time to prioritize your Tasks. Click on the "Prioritize Tasks" button at the right.

Prioritize Tasks

Back to Objective Input

Return to Plan2Fund

The next objective will appear at the top of the page.

When all the tasks have been entered for all the objectives for each goal, click on "Prioritize Tasks" to enter the priority ranking for each task.

Environmental Planning Center

Burns State University

42

Prioritize Tasks

Start Year: 2005

Prioritize each Task for this Start Year with a Task Priority Number. Number 1 being the highest priority. You must assign a different priority number to each task. Scroll down to prioritize all the Tasks. When a Task has been completed check (click) the "Complete" box.

Go to Previous Year

Go to Next Year

Click on "Go to Next Start Year" to move to the next year.

Goal: 2 Protect and restore habitat for key ecological functions, target species, and biological communities in the Blue River Basin

Objective: 1 Decrease fish mortality by 10% by improving fish access within the Blue River Basin through removal of barriers and installing culverts.

Task: 1 Work with fish and wildlife agencies to conduct an assessment to identify potential fish barriers and locations.

Priority: 1 Complete

Click the "Notes" Button to add notes for this Task.

NOTES

Goal: 1 Reduce nonpoint source pollution from agricultural practices for improved water quality in the Blue River Basin

Objective: 1 Increase use of agricultural Best Management Practices for nutrient reduction and fertilizer use on crop land by 25%.

Task: 1 Provide one workshop on proper chemical handling and application.

Priority: 2 Complete

Click the "Notes" Button to add notes for this Task.

NOTES

Back to Tasks for Objectives

Return to Plan2Fund Main Page

Enter the priority number for each task in the listed start year.

Environmental Planning Center

Boise State University

43

43

Prioritize Tasks

Start Year: 2006

Prioritize each Task for this Start Year with a Task Priority Number. Number 1 being the highest priority. You must assign a different priority number to each task. Scroll down to prioritize all the Tasks. When a Task has been completed check (click) the "Complete" box.

Go to Previous Year

Go to Next Year

The next start year will appear at the top of the page with the tasks for that year listed below.

Goal: 1 Reduce nonpoint source pollution from agricultural practices for improved water quality in the Blue River Basin

Objective: 2 Protect 3 miles of critical stream segments to reduce erosion and enhance habitat

Task: 3 Work with willing landowners to install fencing along 50 acres of critical stream bank.

Click the "Notes" Button to add notes for this Task.

NOTES

Priority Complete

1 1

Goal: 2 Protect and restore habitat for key ecological functions, target species, and biological communities in the Blue River Basin

Objective: 1 Decrease fish mortality by 10% by improving fish access within the Blue River Basin through removal of barriers and installing culverts.

Task: 2 Work with landowners to install culverts where barriers exist. Install 2 culverts in 2005

Click the "Notes" Button to add notes for this Task.

Priority Complete

2 1

Back to Tasks for Objectives

Return to Plan2Fund Main Page

Once the priority numbers have been entered for each task, you are done entering the planning data. Click on the "Return to Plan2Fund Main Page"

Environmental Planning Center

Burns State University

44



PLANNING AND BUDGETING DATABASE

- ☐ Input Program Planning Data
- ☐ Input Task Financial Information
- ☐ Contact List
- ☐ Report Menu

☐ Quit



After the planning data is entered, Click on "Input Task Financial Information" to enter the budget information.



Plan2Fund - [Plan2Fund: Task Financial Data]

File Help

Financial Data for Tasks

Goal: 1 Reduce nonpoint source pollution from agricultural practices for improved water quality in the Blue River Basin

Objective: 1 Increase use of agricultural Best Management Practices for nutrient reduction and fertilizer use on crop land by 25%.

Task: 1 Provide one workshop on proper chemical handling and application

Responsible Entity: Seth King Start Year: 2005 Task Priority: 2

Input the Financial Data for this Task for each Budget Category

Task Expenses:

Budget Category	Expenses	Financial Contributions	Non-Financial Contributions	Awarded Grants	Total Balance Needed
Personnel	\$1,500.00	\$500.00	\$500.00	\$0.00	\$500.00
Fringe Benefits	\$0.00	\$0.00	\$0.00	\$0.00	\$0.00
Travel	\$500.00	\$250.00	\$0.00	\$0.00	\$250.00
Equipment	\$0.00	\$0.00	\$0.00	\$0.00	\$0.00
Supplies	\$100.00	\$0.00	\$0.00	\$0.00	\$100.00
Contractual	\$0.00	\$0.00	\$0.00	\$0.00	\$0.00
Construction	\$0.00	\$0.00	\$0.00	\$0.00	\$0.00
Other	\$0.00	\$0.00	\$0.00	\$0.00	\$0.00
Total Direct Costs	\$2,100.00	\$750.00	\$500.00	\$0.00	\$950.00
Indirect Charges	\$400.00	\$0.00	\$0.00	\$0.00	\$400.00
Total Costs	\$2,500.00	\$750.00	\$500.00	\$0.00	\$1,250.00

Track Grants

Back to Previous Task

Go to Next Task

Return to Plan2Fund Main Page

Goal, objective and task information are listed at the top of the page

Enter overall expenses of the task into the expense budget column.

Budget categories are listed to the side.

Environmental Planning Center
Borlaug Institute
Borlaug Institute

Plan2Fund - [Plan2Fund: Task Financial Data]

File Help

Financial Data for Tasks

Goal: 1 Reduce nonpoint source pollution from agricultural practices for improved water quality in the Blue River Basin

Objective: 1 Increase use of agricultural Best Management Practices for nutrient reduction and fertilizer use on crop land by 25%.

Task: 1 Provide one workshop on proper chemical handling and application

Responsible Entity: Seth King Start Year: 2005 Task Priority: 2

Input the Financial Data for this Task for each Budget Category.

Task Expenses:

Budget Category	Expenses	Financial Contributions	Non-Financial Contributions	Awarded Grants	Total Balance Budgeted
Personnel	\$1,500.00	\$500.00	\$500.00	\$0.00	\$500.00
Fringe Benefits	\$0.00	\$0.00	\$0.00	\$0.00	\$0.00
Travel	\$500.00	\$250.00	\$0.00	\$0.00	\$250.00
Equipment	\$0.00	\$0.00	\$0.00	\$0.00	\$0.00
Supplies	\$100.00	\$0.00	\$0.00	\$0.00	\$100.00
Contractual	\$0.00	\$0.00	\$0.00	\$0.00	\$0.00
Construction	\$0.00	\$0.00	\$0.00	\$0.00	\$0.00
Other	\$0.00	\$0.00	\$0.00	\$0.00	\$0.00
Total Direct Costs	\$2,100.00	\$750.00	\$500.00	\$0.00	\$950.00
Indirect Charges	\$400.00	\$0.00	\$0.00	\$0.00	\$400.00
Total Costs	\$2,500.00	\$750.00	\$500.00	\$0.00	\$1,250.00

Track Grants

Back to Previous Task

Go to Next Task

Return to Plan2Fund Main Page

Environmental Finance Center

Borlaug Institute for Food and Nutrition

Borlaug Institute for Food and Nutrition

When you click on a cell to enter financial contributions, a new form will appear.

ContributionsForm

Financial Contributions

Plan2Fund

Goal: 1

Reduce nonpoint source pollution from agricultural practices for improved water quality in the Blue River Basin

Objective: 1

Increase use of agricultural Best Management Practices for nutrient reduction and fertilizer use on crop land by 25%.

Task: 2

Distribute flyers to farmers and livestock operators addressing BMPs for nutrient reduction on cropland and livestock facilities. Provide information on financial incentives for implementation of BMPs.

Budget Category:

Personnel

Contributor	Amount Pledged	Date Pledged	Date Received	Amount Received
Mrs. White	\$1,000.00	12/25/2004	12/26/2004	\$500.00

In the Financial Contributions Form, enter the name of the contributor, the date and amount pledged, and the date and amount received.

Total Expense: \$2,098.00

Total Pledged: \$1,000.00

Total Received: \$500.00

Close

Environmental Planning Center

Brescia University

48

Plan2Fund - [Plan2Fund: Task Financial Data]

File Help

Financial Data for Tasks

Plan2Fund

Goal: 1 Reduce nonpoint source pollution from agricultural practices for improved water quality in the Blue River Basin

Objective: 1 Increase use of agricultural Best Management Practices for nutrient reduction and fertilizer use on crop land by 25%.

Task: 1 Provide one workshop on proper chemical handling and application.

Responsible Entity: Seth King Start Year: 2005 Task Priority: 2

Input the Financial Data for this Task for each Budget Category.

Task Expenses:

Budget Category	Expenses	Financial Contributions	Non-Financial Contributions	Awarded Grants	Total Balance Needed
Personnel	\$1,500.00	\$500.00	\$500.00	\$0.00	\$500.00
Fringe Benefits	\$0.00	\$0.00	\$0.00	\$0.00	\$0.00
Travel	\$500.00	\$250.00	\$0.00	\$0.00	\$250.00
Equipment	\$0.00	\$0.00	\$0.00	\$0.00	\$0.00
Supplies	\$100.00	\$0.00	\$0.00	\$0.00	\$100.00
Contractual	\$0.00	\$0.00	\$0.00	\$0.00	\$0.00
Construction	\$0.00	\$0.00	\$0.00	\$0.00	\$0.00
Other	\$0.00	\$0.00	\$0.00	\$0.00	\$0.00
Total Direct Costs	\$2,100.00	\$750.00	\$500.00	\$0.00	\$850.00
Indirect Charges	\$400.00	\$0.00	\$0.00	\$0.00	\$400.00
Total Costs	\$2,500.00	\$750.00	\$500.00	\$0.00	\$1,250.00

Track Grants

Back to Previous Task

Go to Next Task

Return to Plan2Fund Main Page

When you click on a cell to enter non-financial contributions, a new form will appear.

Environmental Planning Center

Borlaug Institute for Food and Nutrition

49

49

ContributionsForm

Non-Financial Contributions

Plan2Fund

Goal: 1 Reduce nonpoint source pollution from agricultural practices for improved water quality in the Blue River Basin

Objective: 1 Increase use of agricultural Best Management Practices for nutrient reduction and fertilizer use on crop land by 25%.

Task: 2 Distribute flyers to farmers and livestock operators addressing BMPs for nutrient reduction on cropland and livestock facilities. Provide information on financial incentives for implementation of BMPs.

Budget Category: Personnel

Contributor	Description	Estimated Value Pledged	Date Pledged	Date Received	Estimated Received Value
Boy Scouts	Volunteers	\$1,000.00	12/15/2004		\$500.00

For each budget category, enter the contributors name, a description of the contribution, the date and estimated value pledged, and the date and estimated amount received.

Total Expense: \$2,098.00

Total Pledged: \$1,000.00

Total Received: \$500.00

Close

Environmental Planning Center

50

Plan2Fund - [Plan2Fund: Task Financial Data]

File Help

Financial Data for Tasks

Goal: 1 Reduce nonpoint source pollution from agricultural practices for improved water quality in the Blue River Basin

Objective: 1 Increase use of agricultural Best Management Practices for nutrient reduction and fertilizer use on crop land by 25%.

Task: 1 Provide one workshop on proper chemical handling and application

Responsible Entity: Seth King Start Year: 2005 Task Priority: 2

Input the Financial Data for this Task for each Budget Category.

Task Expenses:

Budget Category	Expenses	Financial Contributions	Non-Financial Contributions	Awarded Grants	Total Balance Needed
Personnel	\$1,500.00	\$500.00	\$500.00	\$0.00	\$500.00
Fringe Benefits	\$0.00	\$0.00	\$0.00	\$0.00	\$0.00
Travel	\$500.00	\$250.00	\$0.00	\$0.00	\$250.00
Equipment	\$0.00	\$0.00	\$0.00	\$0.00	\$0.00
Supplies	\$100.00	\$0.00	\$0.00	\$0.00	\$100.00
Contractual	\$0.00	\$0.00	\$0.00	\$0.00	\$0.00
Construction	\$0.00	\$0.00	\$0.00	\$0.00	\$0.00
Other	\$0.00	\$0.00	\$0.00	\$0.00	\$0.00
Total Direct Costs	\$2,100.00	\$750.00	\$500.00	\$0.00	\$950.00
Indirect Charges	\$400.00	\$0.00	\$0.00	\$0.00	\$400.00
Total Costs	\$2,500.00	\$750.00	\$500.00	\$0.00	\$1,250.00

Back to Previous Task

Go to Next Task

Track Grants

Return to Plan2Fund Main Page

Environmental Planning Center

Burns State University

51

Plan2Fund: Grant Tracking

Grant Tracking

Goal:
1
Reduce nonpoint source pollution from agricultural practices for improved water quality in the Blue River Basin

Objective:
1
Increase use of agricultural Best Management Practices for nutrient reduction and fertilizer use on crop land by 25%.

Task:
2
Distribute flyers to farmers and livestock operators addressing BMPs for nutrient reduction on cropland and livestock facilities. Provide information on financial incentives for implementation of BMPs.

Task Notes

Start Year:
2006
Task Priority No.:
6
Responsible Entity:
Gary Carrol

Grant Program Name	Sponsor	Contact Name	Application Deadline	Application Date Submitted	Submittal Date	Amount Requested	Awarded	Date Awarded	Award Amount	Denied
EPA Grant	EPA	Jane Smith	6/15/2005	<input checked="" type="checkbox"/>	2/15/2005	\$5,500.00	<input checked="" type="checkbox"/>	4/15/2005	\$3,500.00	<input type="checkbox"/>
USDA Grant	USDA	Bill Johnson	3/15/2005	<input checked="" type="checkbox"/>	4/15/2005	\$4,500.00	<input type="checkbox"/>		\$0.00	<input type="checkbox"/>
				<input type="checkbox"/>			<input type="checkbox"/>			<input type="checkbox"/>

When finished, click Exit to return to Financial Data for Tasks
Exit

Enter the grant name, sponsor and the contact information for the grant. Also enter the information on the application deadline, date submitted, amount requested, the date and amount awarded.

Environmental Planning Center
Borzo State University

52

Plan2Fund: Grant Tracking

Grant Tracking

Goal:
1
Reduce nonpoint source pollution from agricultural practices for improved water quality in the Blue River Basin

Objective:
1
Increase use of agricultural Best Management Practices for nutrient reduction and fertilizer use on crop land by 25%.

Task:
2
Distribute flyers to farmers and livestock operators addressing BMPs for nutrient reduction on cropland and livestock facilities. Provide information on financial incentives for implementation of BMPs.

Task Notes

Start Year:
2006
Task Priority No.:
6
Responsible Entity:
Gary Carrol

Grant Program Name	Sponsor	Contact Name	Application Deadline Date	Application Submitted	Submittal Date	Amount Requested	Awarded	Date Awarded	Award Amount	Denied
EPA Grant	EPA	Jane Smith	6/15/2005	<input checked="" type="checkbox"/>	2/15/2005	\$5,500.00	<input checked="" type="checkbox"/>	4/15/2005	\$3,500.00	<input type="checkbox"/>
USDA Grant	USDA	Bill Johnson	3/15/2005	<input checked="" type="checkbox"/>	4/15/2005	\$4,500.00	<input type="checkbox"/>		\$0.00	<input type="checkbox"/>
				<input type="checkbox"/>			<input type="checkbox"/>			<input type="checkbox"/>

When finished, click Exit to return to Financial Data for Tasks
Exit

Environmental Planning Center
Borzo State University

54

Plan2Fund: Task Notes

File Format

Goal: 1

Reduce nonpoint source pollution from agricultural practices for improved water quality in the Blue River Basin.

Objective:

1 Increase use of agricultural Best Management Practices for nutrient reduction and fertilizer use on crop land by 25%.

Task:

2 Distribute flyers to farmers and livestock operators addressing BMPs for nutrient reduction on cropland and livestock facilities. Provide information on how

Notes:

Close

Plan2Fund

es for improved water quality in the Blue River Basin.

ces for nutrient reduction and fertilizer use on crop land by 25%.

operators addressing BMPs for nutrient reduction on information on financial incentives for

Task Notes

Responsible Entity:

Gary Carrol

Application Deadline	Application Submitted	Submital Date	Amount Requested	Awarded	Date Awarded	Award Amount	Denied
6/15/2005	<input checked="" type="checkbox"/>	2/15/2005	\$5,500.00	<input checked="" type="checkbox"/>	4/15/2005	\$3,500.00	<input type="checkbox"/>
3/15/2005	<input checked="" type="checkbox"/>	4/15/2005	\$4,500.00	<input type="checkbox"/>		\$0.00	<input type="checkbox"/>
	<input type="checkbox"/>			<input type="checkbox"/>			<input type="checkbox"/>

When finished, click Exit to return to Financial Data for Tasks

Exit

You can use the "Task Notes" form to add additional notes and detailed information for each task.

Environmental Planning Center
Borzo State University

55

55

Financial Data for Tasks

Goal: 1 Reduce nonpoint source pollution from agricultural practices for improved water quality in the Blue River Basin

Objective: 1 Increase use of agricultural Best Management Practices for nutrient reduction and fertilizer use on crop land by 25%.

Task: 2 Distribute flyers to farmers and livestock operators addressing BMPs for nutrient reduction on cropland and livestock facilities; information on financial incentives for implementation of BMPs.

Responsible Entity: Gary Carol

Start Year: 2006

Task Priority: 6

Input the Financial Data for this Task for each Budget Category.

Task Expenses:

Budget Category	Expenses	Financial Contributions	Non-Financial Contributions	Awarded Grants	Total Balance Needed
Personnel	\$2,098.00	\$500.00	\$500.00	\$1,000.00	\$90.00
Fringe Benefits	\$1,000.00	\$65.00	\$0.00	\$500.00	\$435.00
Travel	\$0.00	\$0.00	\$0.00	\$0.00	\$0.00
Equipment	\$0.00	\$0.00	\$0.00	\$0.00	\$0.00
Supplies	\$2,000.00	\$0.00	\$500.00	\$1,500.00	\$0.00
Contractual	\$0.00	\$0.00	\$0.00	\$0.00	\$0.00
Construction	\$0.00	\$0.00	\$0.00	\$0.00	\$0.00
Other	\$0.00	\$0.00	\$0.00	\$0.00	\$0.00
Total Direct Costs	\$5,098.00	\$565.00	\$1,000.00	\$3,000.00	\$533.00
Indirect Charges	\$500.00	\$0.00	\$0.00	\$500.00	\$0.00
Total Costs	\$5,598.00	\$565.00	\$1,000.00	\$3,500.00	\$533.00
				Track Grants	

Once all the budget information has been entered, a balance needed amount will be totaled for the task.

Back to Previous Task

Go to Next Task

To enter budget information for the next task, click on "Go to Next Task"

Return to Plan2Fund Main Page

Financial Data for Tasks



Goal: 1 Reduce nonpoint source pollution from agricultural practices for improved water quality in the Blue River Basin

Objective: 1 Increase use of agricultural Best Management Practices for nutrient reduction and fertilizer use on crop land by 25%.

Task: 2 Distribute flyers to farmers and livestock operators addressing BMPs for nutrient reduction on cropland and livestock facilities. Provide information on financial incentives for implementation of BMPs.

Responsible Entity: Gary Carol

Start Year: 2006

Task Priority: 6

Input the Financial Data for this Task for each Budget Category.

Task Expenses:

Budget Category	Expenses	Financial Contributions	Non-Financial Contributions	Awarded Grants	Total Balance Needed
Personnel	\$2,098.00	\$500.00	\$500.00	\$1,000.00	\$90.00
Fringe Benefits	\$1,000.00	\$65.00	\$0.00	\$500.00	\$435.00
Travel	\$0.00	\$0.00	\$0.00	\$0.00	\$0.00
Equipment	\$0.00	\$0.00	\$0.00	\$0.00	\$0.00
Supplies	\$2,000.00	\$0.00	\$500.00	\$1,500.00	\$0.00
Contractual	\$0.00	\$0.00	\$0.00	\$0.00	\$0.00
Construction	\$0.00	\$0.00	\$0.00	\$0.00	\$0.00
Other	\$0.00	\$0.00	\$0.00	\$0.00	\$0.00
Total Direct Costs	\$5,098.00	\$565.00	\$1,000.00	\$3,000.00	\$533.00
Indirect Charges	\$500.00	\$0.00	\$0.00	\$500.00	\$0.00
Total Costs	\$5,598.00	\$565.00	\$1,000.00	\$3,500.00	\$533.00

Track Grants

Back to Previous Task

Go to Next Task

Return to Plan2Fund Main Page

When the budget information has been entered for all the tasks, you are done entering the financial data. Click on "Return to Plan2Fund Main Page" to return to the main page.



PLANNING AND BUDGETING DATABASE

- ☐ Input Program Planning Data
- ☐ Input Task Financial Information
- ☐ Contact List
- ☐ Report Menu

To add or edit a contact,
click on "Contact List".

Quit



ContactForm [X]

Responsible Entities [Close]

First Name

Last Name

Organization

Address

City

State Email Address

Zip Code Phone Number

Active ☒

You can scroll through the contacts entered, edit information, delete contacts or add a new contact [Delete]

[<] [<] Record: 1 6 [>] [>] [New]

Environmental Planning Center
Boise State University

59



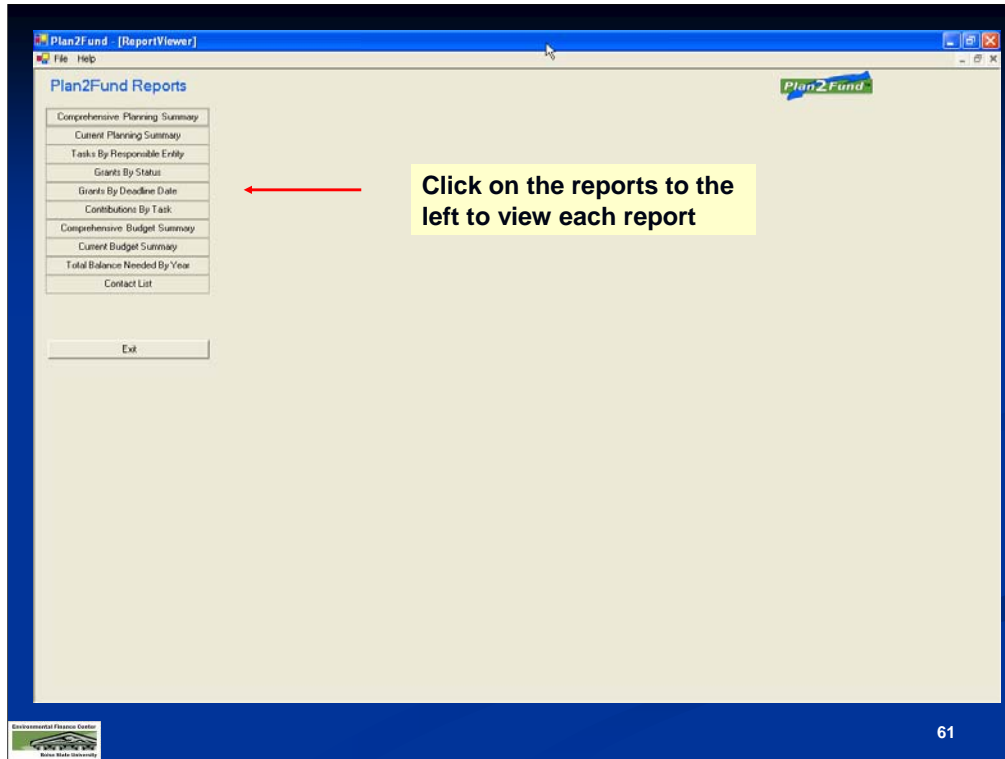
PLANNING AND BUDGETING DATABASE

- ☐ Input Program Planning Data
- ☐ Input Task Financial Information
- ☐ Contact List
- ☐ Report Menu

To view reports, click
on "Reports Menu"

☐ Quit





Plan2Fund - [ReportViewer]

File Help

Plan2Fund Reports

Close Report

Plan2Fund

MainReport

Comprehensive Planning Summary

8/2/2005

Goal: 1

Reduce nonpoint source pollution from quality in the Blue River Basin

Goal Complete: No

Objective: 1

Increase use of agricultural Best Management on crop land by 25%.

Objective Complete: No

Responsible Entity: Gary Carrol

Task: 2

Distribute flyers to farmers and livestock operators livestock facilities. Provide information on financial

Complete: Yes

Start Year: 2006

Task Priority No. 6

Responsible Entity: Seth King

Task: 1

Provide one workshop on proper chemical handling and application.

Complete: No

Start Year: 2005

Task Priority No. 2

Current Page No: 1

Total Page No: 4

Zoom Factor: 100%

Environmental Planning Center

Burns State University

The Comprehensive Planning Summary Report lists all (completed and uncompleted) Goals, Objectives, and Tasks in numeric order of Goal, Objective, and Task.

Plan2Fund [ReportViewer]

File Help

Plan2Fund Reports

Close Report

Plan2Fund

MainReport

Current Planning Summary

8/2/2005

Goal: 1

Reduce nonpoint source pollution from agricultural practices for improved water quality in the Blue River Basin

Goal Complete: No

Objective:

Increase use of agricultural Best Management Practices on cropland by 25%.

Objective Complete: No

Responsible Entity: Seth King

Task: 1

Provide one workshop on proper chemical handling

Completed: No

Start Year: 2005

Task Priority No. 2

Objective:

Protect 3 miles of critical stream segments to reduce erosion and enhance habitat.

Objective Complete: No

Responsible Entity: Seth King

Current Page No: 1

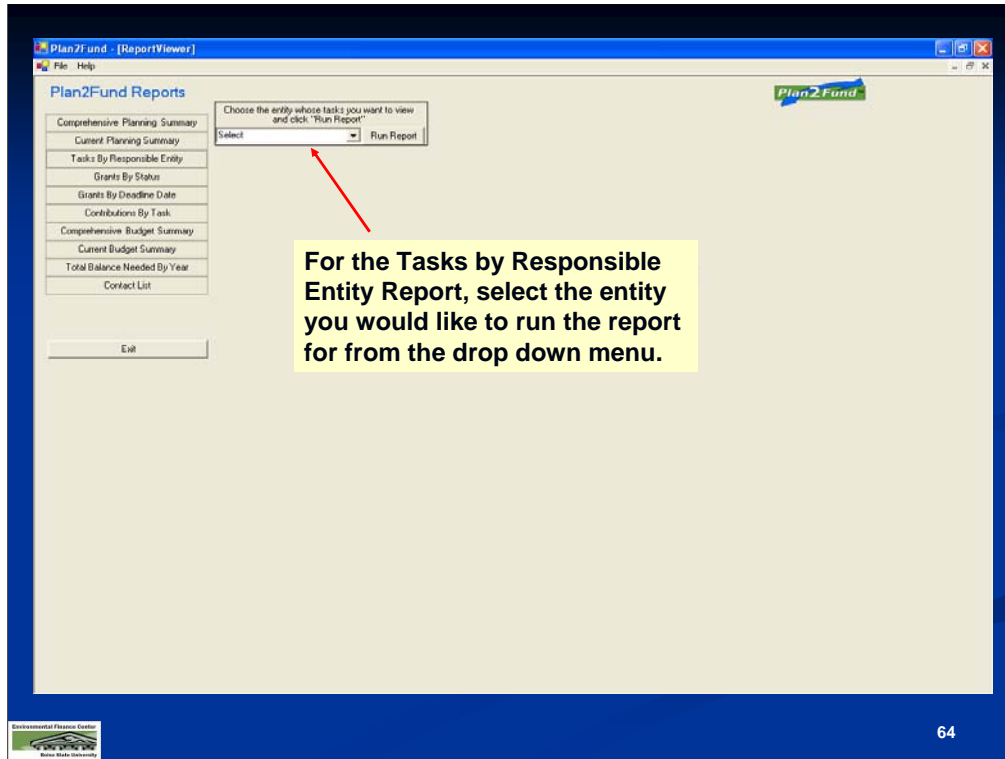
Total Page No: 4

Zoom Factor: 100%

Environmental Planning Center

Burns State University

The Current Planning Summary Report lists all *uncompleted* Goals, Objectives, and Tasks in numeric order of Goal, Objective, and Task.



Plan2Fund [ReportViewer]

File Help

Plan2Fund Reports

Close Report

Plan2Fund

Main Report

Tasks By Responsible Entity

Responsible Entity: Gary Carrol

Goal: 2 Protect and restore habitat for key ecological functions, target

Objective: 1 Decrease fish mortality by 10% by improving fish access wi

Task: 1 Work with fish and wildlife agencies to conduct an assessment to

Task Start Year: 2005

Task Priority No.: 1

Goal: 3 Improve infrastructure and stormwater systems to reduce point source pollution for improved water quality in the

Objective: 1 Work with the the county to develop a community septic / sewer system in densely populated areas within the

Task: 1 Work with the county to evaluate sites to determine need, cost and feasibility. This includes meeting with city and

Task Start Year: 2006

Task Priority No.: 5

Goal: 1 Reduce nonpoint source pollution from agricultural practices for improved water quality in the Blue River Basin

Objective: 1 Increase use of agricultural Best Management Practices for nutrient reduction and fertilizer use on crop land by

Task: 2 Distribute flyers to farmers and livestock operators addressing BMPs for nutrient reduction on cropland and livestock

Task Start Year: 2006

Task Priority No.: 6

Current Page No: 1

Total Page No: 1

Zoom Factor: 100%

Environmental Planning Center

Burns State University

The Task by Responsible Entity Report creates a report of all the tasks that the entity you selected is responsible for.

Plan2Fund [ReportViewer]

File Help

Plan2Fund Reports

Close Report

Plan2Fund

MainReport

Grant Tracking By Status

Goal: 1 Reduce nonpoint source pollution from ag

Objective: 1 Increase use of agricultural Best Management Practices for nutrient reduction and fertilizer use on crop land by 2.7%.

Task: 1 Provide one workshop on proper chemical handling and application.

Task Start Year: 2005 **Task Priority No.:** 2

Submitted

Grant Program Name	Sponsor	Contact Name	Application Deadline Date	Submit Date	Amount Requested	Date Awarded	Amount Awarded
Education Grant	EPA	Mr. Smith	12/15/2005	12/15/2005	\$700.00	1/30/2004	\$700.00

Task: 2 Distribute flyers to farmers and livestock operators addressing BMPs for nutrient reduction on cropland and livestock facilities. Provide information on financial incentives for implementation of BMPs.

Task Start Year: 2006 **Task Priority No.:** 6

Awarded

Grant Program Name	Sponsor	Contact Name	Application Deadline Date	Submit Date	Amount Requested	Date Awarded	Amount Awarded
EPA Grant	EPA	Jane Smith	6/15/2005	2/15/2005	\$5,500.00	4/15/2005	\$3,500.00

Current Page No: 1 Total Page No: 5 Zoom Factor: 100%

Environmental Planning Center

Browns State University

66

Plan2Fund - [ReportViewer]

File Help

Plan2Fund Reports

Close Report

Plan2Fund

ManReport

Grant Tracking - By Deadline Date

Goal: 3 Improve infrastructure and stormwater systems to reduce point source pollution.

Objective: 1 Work with the the county to develop a community septic / sewer system in densely populated areas within the county where city services are not available.

Task: 2 Work with the county to design a community sewage system.

Task Start Year: 2007 **Task Priority No.:** 4

Grant Program Name	Sponsor	Contact Name	Application Deadline Date	Submit Date	Amount Requested	Date Awarded	Amount Awarded
Waster Water Grant	EPA	Ms. Thomas	12/1/2006		\$7,700.00		\$0.00

Task Notes:

Current Page No: 1

Total Page No: 1

Zoom Factor: 100%

Environmental Planning Center

Bowling Green State University

67

Plan2Fund [ReportViewer]

File Help

Plan2Fund Reports

Close Report

Plan2Fund

Main Report

Contributions

Goal: 1 Reduce nonpoint source pollution from agricultural practices

Objective: 1 Increase use of agricultural Best Management Practices for nutrient reduction and fertilizer use on crop land by 25%.

Task: 1 Provide one workshop on proper chemical handling and application.

Budget Category: Personnel

Financial Contributions

Contributor	Amount Pledged	Date Pledged	Date Received	Amount Received
John Doe	\$500.00	12/15/2002	1/15/2005	\$500.00
Totals:	\$500.00			\$500.00

Non-Financial Contributions


Contributor	Description	Estimated Value	Date Pledged	Date Received	Estimated Actual Value
Volunteer	present workshop	\$500.00	2/15/2005	1/16/2005	\$500.00
Totals:		\$500.00			\$500.00

Current Page No. 1

Total Page No. 6

Zoom Factor: 100%

Environmental Planning Center



Browns State University

Contributions by Task Report lists the financial and non-financial contributions by Task. Tasks are listed in numeric order of Goal, Objective, and Task.

Plan2Fund - [ReportViewer]

File Help

Plan2Fund Reports

Close Report

Plan2Fund

MainReport

Comprehensive Budget Summary

Goal: 1 Reduce nonpoint source pollution from agricultural practices for in River Basin

Objective: 1 Increase use of agricultural Best Management Practices for fertilizer use on crop land by 25%.

Budget Summary for Objective:

Expenses	Financial Contributions	Non-Financial Contributions	Grants Awarded	Balance Needed
\$ 8,098.00	\$ 1,565.00	\$ 2,018.00	\$ 3,500.00	\$ 1,015.00

Responsible Entity: Carrol, Gary

Task Priority No.: 6 **Start Year:** 2006

Task: 2 Distribute flyers to farmers and livestock operators addressing BMPs for nutrient reduction on cropland and livestock facilities. Provide information on financial incentives for implementation of BMPs.


Budget Category	Expense	Financial Contributions	Non-Financial Contributions	Grants Awarded	Balance Needed
Personnel	\$ 2,098.00	\$ 500.00	\$ 1,000.00	\$ 1,000.00	\$-402.00
Fringe Benefits	\$ 1,000.00	\$ 65.00	\$ 0.00	\$ 500.00	\$ 435.00
Travel	\$ 0.00	\$ 0.00	\$ 0.00	\$ 0.00	\$ 0.00
Equipment	\$ 0.00	\$ 0.00	\$ 15.00	\$ 0.00	\$-15.00
Supplies	\$ 2,000.00	\$ 0.00	\$ 500.00	\$ 1,500.00	\$ 0.00
Contractual	\$ 0.00	\$ 0.00	\$ 0.00	\$ 0.00	\$ 0.00
Construction	\$ 0.00	\$ 0.00	\$ 0.00	\$ 0.00	\$ 0.00
Other	\$ 0.00	\$ 0.00	\$ 0.00	\$ 0.00	\$ 0.00
Total Direct Costs	\$ 5,098.00	\$ 565.00	\$ 1,515.00	\$ 3,000.00	\$ 18.00
Indirect Charges	\$ 500.00	\$ 0.00	\$ 0.00	\$ 500.00	\$ 0.00
Total	\$ 5,598.00	\$ 565.00	\$ 1,515.00	\$ 3,500.00	\$ 18.00

Current Page No: 1

Total Page No: 12

Zoom Factor: 100%

Environmental Finance Center



Browns State University

69

Plan2Fund [ReportViewer]

File Help

Plan2Fund Reports

Close Report

Plan2Fund

MainReport

Current Budget Summary

Goal: 1 Reduce nonpoint source pollution from agricultural River Basin

Objective: 1 Increase use of agricultural Best Management on crop land by 25%.

Budget Summary for Objective:				
Expenses	Financial Contributions	Non-Financial Contributions	Grants Awarded	Balance Needed
\$ 2,500.00	\$ 1,000.00	\$ 503.00	\$ 0.00	\$ 997.00

Task Priority No.: 2 Start Year: 2005

Task: 1 Provide one workshop on proper chemical handling and application.

Responsible Entity: King, Seth

Budget Category	Expense	Financial Contributions	Non-Financial Contributions	Grants Awarded	Balance Needed
Personnel	\$1,500.00	\$500.00	\$500.00	\$0.00	\$500.00
Fringe Benefits	\$0.00	\$0.00	\$0.00	\$0.00	\$0.00
Travel	\$500.00	\$500.00	\$3.00	\$0.00	-\$3.00
Equipment	\$0.00	\$0.00	\$0.00	\$0.00	\$0.00
Supplies	\$100.00	\$0.00	\$0.00	\$0.00	\$100.00
Contractual	\$0.00	\$0.00	\$0.00	\$0.00	\$0.00
Construction	\$0.00	\$0.00	\$0.00	\$0.00	\$0.00

Current Page No: 1

Total Page No: 11

Zoom Factor: 100%

Environmental Finance Center

Bowling Green State University

Plan2Fund - [ReportViewer]

File Help

Plan2Fund Reports Close Report

MainReport

Total Balance Needed By Year

8/2/2005

BudgetCategoryName	Expense	Financial Contributions	NonFinancial Contributions	Grants	Balance Needed
Start Year 2005					
Personnel	\$ 4,000.00	\$ 500.00	\$ 1,500.00	\$ 2,250.00	\$ 0.00
Fringe Benefits	\$ 1,000.00	\$ 0.00	\$ 0.00	\$ 500.00	\$ 500.00
Travel	\$ 1,000.00	\$ 250.00	\$ 0.00	\$ 750.00	\$ 0.00
Equipment	\$ 0.00	\$ 0.00	\$ 0.00	\$ 0.00	\$ 0.00
Supplies	\$ 100.00	\$ 0.00	\$ 0.00	\$ 100.00	\$ 0.00
Contractual	\$ 0.00	\$ 0.00	\$ 0.00	\$ 0.00	\$ 0.00
Construction	\$ 0.00	\$ 0.00	\$ 0.00	\$ 0.00	\$ 0.00
Other	\$ 0.00	\$ 0.00	\$ 0.00	\$ 0.00	\$ 0.00
Indirect Charges	\$ 1,400.00	\$ 0.00	\$ 0.00	\$ 700.00	\$ 700.00
Totals For 2005	\$ 7,500.00	\$ 750.00	\$ 1,500.00	\$ 4,300.00	\$ 1,200.00
Start Year 2006					
Personnel	\$ 38,500.00	\$ 4,000.00	\$ 4,000.00	\$ 15,000.00	\$ 1,000.00
Fringe Benefits	\$ 10,400.00	\$ 0.00	\$ 0.00	\$ 5,000.00	\$ 5,400.00
Travel	\$ 5,200.00	\$ 1,000.00	\$ 0.00	\$ 4,200.00	\$ 0.00
Equipment	\$ 2,000.00	\$ 0.00	\$ 0.00	\$ 0.00	\$ 0.00
Supplies	\$ 14,000.00	\$ 0.00	\$ 0.00	\$ 14,000.00	\$ 0.00
Contractual	\$ 15,000.00	\$ 0.00	\$ 0.00	\$ 0.00	\$ 0.00
Construction	\$ 0.00	\$ 0.00	\$ 0.00	\$ 0.00	\$ 0.00
Other	\$ 0.00	\$ 0.00	\$ 0.00	\$ 0.00	\$ 0.00
Indirect Charges	\$ 1,400.00	\$ 0.00	\$ 0.00	\$ 700.00	\$ 700.00
Totals For 2006	\$ 83,500.00	\$ 4,000.00	\$ 4,000.00	\$ 34,700.00	\$ 11,100.00

Current Page No: 1 Total Page No: 1

Environmental Finance Center
Bowie State University

The Total Balance by Year Report presents the total balance of Expenses, Financial Contributions, Non-Financial Contributions, Grants, and the Balance Needed, by budget category for each start year.

Plan2Fund - [ReportViewer]

File Help

Plan2Fund Reports

Close Report

Plan2Fund

MainReport

Responsible Entities List

8/2/2005

Organization	First Name	Last Name	Email	Phone	Address	City	State	Zip Code
	Seth	King	sking@mg-bot.com	208-422-9140	1234 Main Street	Boise	ID	83702
	Gary	Carrol	gcarrol@bsu.edu	208-445-5546	2222 Apple Street	Boise	ID	83706
	Bob	Hope						
The Network Group	John	Wayne						
	fred	Flintstone	???	1		Bedrock	flatland	1
	Barney	Rubble						

The Contact List Report gives a list of the contact data for each responsible entity.

Current Page No: 1

Total Page No: 1

Zoom Factor: 100%

Environmental Planning Center

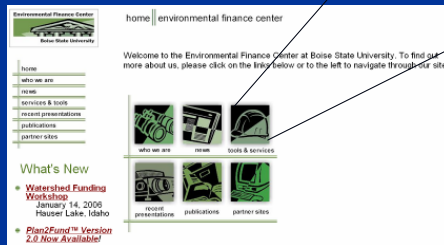
Boise State University

How Do I Get Plan2Fund?

1. Download From EFC Website



Click on
"Tools and
Services"



How Do I Get Plan2Fund?

1. Download From EFC Website

- Requirements:
 - Must have .NET Framework (download free)
 - Must have WinZip or a similar program (download evaluation version free)
- Detailed Instructions on Website

2. Request a copy on CD-ROM



Questions

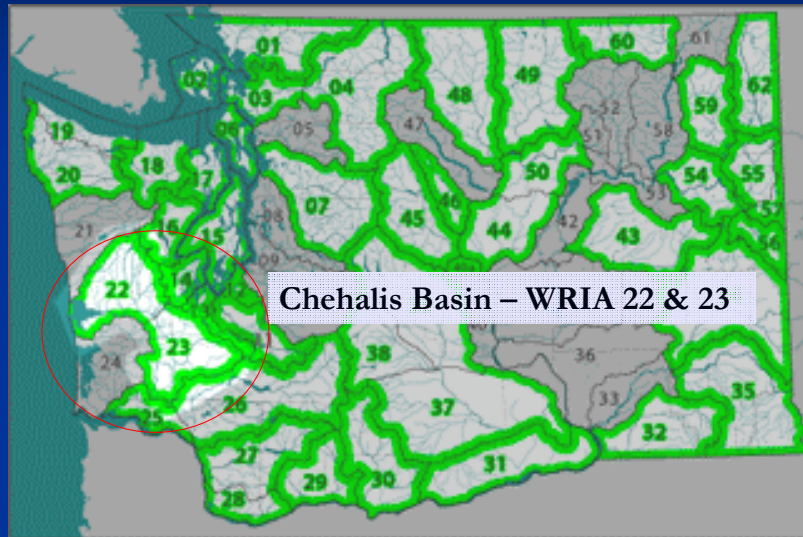


Chehalis Basin Partnership

Who We Are

- Partners and Members
- Watershed Characteristics and Location

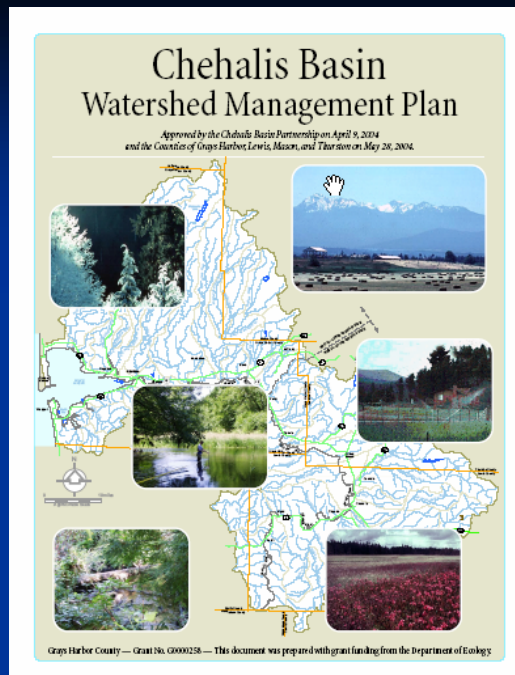
Chehalis Basin Partnership



Washington Watershed Planning Process

- Phase 1: Organization
- Phase 2: Assessment
- Phase 3: Watershed Plan Development
- Phase 4: Implementation

Chehalis Basin Partnership



Chehalis Basin Partnership



Using Plan2Fund: entering planning data from the
Chehalis Basin Watershed Management Plan

What to do first?



Demonstrate Chehalis Basin Partnership
Prioritization Process

Chehalis Watershed Partnership: Decision Rules for Prioritization of Objectives

	Decision Rules	Definitions	Range
1	Is it a primary objective?	Does something else need to happen before something else? Value added creates the potential for any other objective to be accomplished. Value added includes satisfying data gaps.	Value added independent (high) Independent (medium) or dependent (low) variable.
2	How many planning categories does the objective meet?	Accomplishes one or more of the four categories (wq, wq, h, isf) This assumes that all objectives that protect or enhance instream flows get four points because all planning components apply. Run this as a separate rule.	1-4 weighting
3	Is the objective time sensitive (deadline)?	Does this have to be done within a specific or critical time period? Each item can have its own critical time period based on experience.	Short term (3 years or less) – long term
4	How achievable is the objective?	Do we know the resources (people, data, public support, and money) are available to do it?	High-Medium-Low
5	Is it a long term or short term benefit to the Basin's health?	Limited resources	No long term or unknown benefit (0)
6	Required by local, state, or federal law or other agreements.		Yes (1) or No (0)

Chehalis Basin Prioritization Process

Decision Rules

Chehalis Watershed Partnership Decision Model: WMP Actions (Objectives)						
	Decision Rule 1		Decision Rule 2		Decision Rule 3	
Weight (%)	17%		17%		17%	
Basis of Ranking	High = 3		Range = 4 High		Short-term = 1	
	Medium = 2		to 1 Low		Long-term = 0	
	Low = 1					
WMP Action #	score		score		score	
36	2	0.170	3	0.170	1	1
7	3	0.255	4	0.227	1	1
31	2	0.170	1	0.057	1	1
53	2	0.170	1	0.057	1	1

Weight (%)

Ranking

Objectives
(action items)

Score



Chehalis Basin Prioritization Process

Equal Weight

Chehalis Watershed Partnership Decision Model: WMP Actions (Objectives)

	Decision Rule 1	Decision Rule 2	Decision Rule 3	Decision Rule 4	Decision Rule 5	Decision Rule 6	Total Weight/Score
Weight (%)	17%	17%	17%	16%	17%	16%	100%
Basis of Ranking	High = 3 Medium = 2 Low = 1	Range = 4 High to 1 Low	Short-term = 1 Long-term = 0	High = 3 Medium = 2 Low = 1	Long-term = 1 Short-term = 0	Yes = 1 No = 0	
WMP Action #	score	score	score	score	score	score	Objective sort
36	2 0.170	3 0.170	1 0.170	3 0.240	1 0.170	1 0.160	1.080
7	3 0.255	4 0.227	1 0.170	2 0.160	1 0.170	0 0.000	0.982
31	2 0.170	1 0.057	1 0.170	3 0.240	1 0.170	1 0.160	0.967
53	2 0.170	1 0.057	1 0.170	3 0.240	1 0.170	1 0.160	0.967
1	3 0.255	1 0.057	1 0.170	3 0.240	1 0.170	0 0.000	0.892
21	3 0.255	1 0.057	1 0.170	3 0.240	1 0.170	0 0.000	0.892
54	3 0.255	1 0.057	1 0.170	3 0.240	1 0.170	0 0.000	0.892
38	2 0.170	1 0.057	1 0.170	2 0.160	1 0.170	1 0.160	0.887
47	3 0.255	1 0.057	1 0.170	2 0.160	1 0.170	0 0.000	0.812
25	2 0.170	1 0.057	1 0.170	3 0.240	1 0.170	0 0.000	0.807
48	2 0.170	1 0.057	1 0.170	3 0.240	1 0.170	0 0.000	0.807
50	2 0.170	1 0.057	1 0.170	2 0.160	1 0.170	0 0.000	0.727
23	1 0.085	1 0.057	1 0.170	3 0.240	1 0.170	0 0.000	0.722
41	2 0.170	2 0.113	1 0.170	1 0.080	1 0.170	0 0.000	0.703
10	1 0.085	2 0.113	0 0.000	2 0.160	1 0.170	1 0.160	0.688
9	1 0.085	3 0.170	1 0.170	1 0.080	1 0.170	0 0.000	0.675
20	2 0.170	1 0.057	1 0.170	1 0.080	1 0.170	0 0.000	0.647
3	3 0.255	1 0.057	1 0.170	2 0.160	0 0.000	0 0.000	0.642

Chehalis Basin Prioritization Process

Higher Weight For Decision Rule 1 & 2

Chehalis Watershed Partnership Decision Model: WMP Actions (Objectives)

	Decision Rule 1	Decision Rule 2	Decision Rule 3	Decision Rule 4	Decision Rule 5	Decision Rule 6	Total Weight/Score
Weight (%)	30%	30%	10%	15%	10%	5%	100%
Basis of Ranking	High = 3 Medium = 2 Low = 1	Range = 4 High to 1 Low	Short-term = 1 Long-term = 0	High = 3 Medium = 2 Low = 1	Long-term = 1 Short-term = 0	Yes = 1 No = 0	
WMP Action #	score	score	score	score	score	score	Objective sort
7	3 0.450	4 0.400	1 0.100	2 0.150	1 0.100	0 0.000	1.200
36	2 0.300	3 0.300	1 0.100	3 0.225	1 0.100	0 0.000	1.075
1	3 0.450	1 0.100	1 0.100	3 0.225	1 0.100	0 0.000	0.975
21	3 0.450	1 0.100	1 0.100	3 0.225	1 0.100	0 0.000	0.975
54	3 0.450	1 0.100	1 0.100	3 0.225	1 0.100	0 0.000	0.975
47	3 0.450	1 0.100	1 0.100	2 0.150	1 0.100	0 0.000	0.900
31	2 0.300	1 0.100	1 0.100	3 0.225	1 0.100	1 0.050	0.875
53	2 0.300	1 0.100	1 0.100	3 0.225	1 0.100	1 0.050	0.875
25	2 0.300	1 0.100	1 0.100	3 0.225	1 0.100	0 0.000	0.825
48	2 0.300	1 0.100	1 0.100	3 0.225	1 0.100	0 0.000	0.825
38	2 0.300	1 0.100	1 0.100	2 0.150	1 0.100	1 0.050	0.800
3	3 0.450	1 0.100	1 0.100	2 0.150	0 0.000	0 0.000	0.800
41	2 0.300	2 0.200	1 0.100	1 0.075	1 0.100	0 0.000	0.775
50	2 0.300	1 0.100	1 0.100	2 0.150	1 0.100	0 0.000	0.750
9	1 0.150	3 0.300	1 0.100	1 0.075	1 0.100	0 0.000	0.725
20	2 0.300	1 0.100	1 0.100	1 0.075	1 0.100	0 0.000	0.675
23	1 0.150	1 0.100	1 0.100	3 0.225	1 0.100	0 0.000	0.675
10	1 0.150	2 0.200	0 0.000	2 0.150	1 0.100	1 0.050	0.650

Decision Rule 1: Is it a primary objective?

Decision Rule 2: Number of planning categories the objective meets



Chehalis Basin Prioritization Process

Decision Rules 3 & 5 = Zero Weight

Chehalis Watershed Partnership Decision Model: WMP Actions (Objectives)

	Decision Rule 1	Decision Rule 2	Decision Rule 3	Decision Rule 4	Decision Rule 5	Decision Rule 6	Total Weight/Score
Weight (%)	35%	35%	0%	15%	0%	15%	100%
Basis of Ranking	High = 3 Medium = 2 Low = 1	Range = 4 High to 1 Low	Short-term = 1 Long-term = 0	High = 3 Medium = 2 Low = 1	Long-term = 1 Short-term = 0	Yes = 1 No = 0	
WMP Action #	score	score	score	score	score	score	Objective sort
7	3 0.525	4 0.467	1 0.000	2 0.150	1 0.000	0 0.000	1.142
36	2 0.350	3 0.350	1 0.000	3 0.225	1 0.000	1 0.150	1.075
1	3 0.525	1 0.117	1 0.000	3 0.225	1 0.000	0 0.000	0.867
21	3 0.525	1 0.117	1 0.000	3 0.225	1 0.000	0 0.000	0.867
54	3 0.525	1 0.117	1 0.000	3 0.225	1 0.000	0 0.000	0.867
31	2 0.350	1 0.117	1 0.000	3 0.225	1 0.000	1 0.150	0.842
53	2 0.350	1 0.117	1 0.000	3 0.225	1 0.000	1 0.150	0.842
3	3 0.525	1 0.117	1 0.000	2 0.150	0 0.000	0 0.000	0.792
47	3 0.525	1 0.117	1 0.000	2 0.150	1 0.000	0 0.000	0.792
38	2 0.350	1 0.117	1 0.000	2 0.150	1 0.000	1 0.150	0.767
10	1 0.175	2 0.233	0 0.000	2 0.150	1 0.000	1 0.150	0.708
25	2 0.350	1 0.117	1 0.000	3 0.225	1 0.000	0 0.000	0.692
48	2 0.350	1 0.117	1 0.000	3 0.225	1 0.000	0 0.000	0.692
41	2 0.350	2 0.233	1 0.000	1 0.075	1 0.000	0 0.000	0.658
50	2 0.350	1 0.117	1 0.000	2 0.150	1 0.000	0 0.000	0.617
9	1 0.175	3 0.350	1 0.000	1 0.075	1 0.000	0 0.000	0.600
20	2 0.350	1 0.117	1 0.000	1 0.075	1 0.000	0 0.000	0.542
23	1 0.175	1 0.117	1 0.000	3 0.225	1 0.000	0 0.000	0.517

Decision Rule 3: Is the objective time sensitive (deadline)?

Decision Rule 5: Is it a long term or short term benefit to the Basin's health?

Chehalis Basin Prioritization Process

Zero Weight for Rules 3 & 5
Highest Weight to Decision Rule 6

Chehalis Watershed Partnership Decision Model: WMP Actions (Objectives)

Weight (%)	Decision Rule 1	Decision Rule 2	Decision Rule 3	Decision Rule 4	Decision Rule 5	Decision Rule 6	Total Weight/Score
	20%	30%	0%	15%	0%	35%	100%
Basis of Ranking	High = 3 Medium = 2 Low = 1	Range = 4 High to 1 Low	Short-term = 1 Long-term = 0	High = 3 Medium = 2 Low = 1	Long-term = 1 Short-term = 0	Yes = 1 No = 0	
WMP Action #	score	score	score	score	score	score	Objective sort
36	2 0.200	3 0.300	1 0.000	3 0.225	1 0.000	1 0.350	1.075
31	2 0.200	1 0.100	1 0.000	3 0.225	1 0.000	1 0.350	0.875
53	2 0.200	1 0.100	1 0.000	3 0.225	1 0.000	1 0.350	0.875
7	3 0.300	4 0.400	1 0.000	2 0.150	1 0.000	0 0.000	0.850
38	2 0.200	1 0.100	1 0.000	2 0.150	1 0.000	1 0.350	0.800
10	1 0.100	2 0.200	0 0.000	2 0.150	1 0.000	1 0.350	0.800
1	3 0.300	1 0.100	1 0.000	3 0.225	1 0.000	0 0.000	0.625
21	3 0.300	1 0.100	1 0.000	3 0.225	1 0.000	0 0.000	0.625
54	3 0.300	1 0.100	1 0.000	3 0.225	1 0.000	0 0.000	0.625
47	3 0.300	1 0.100	1 0.000	2 0.150	1 0.000	0 0.000	0.550
3	3 0.300	1 0.100	1 0.000	2 0.150	0 0.000	0 0.000	0.550
25	2 0.200	1 0.100	1 0.000	3 0.225	1 0.000	0 0.000	0.525
48	2 0.200	1 0.100	1 0.000	3 0.225	1 0.000	0 0.000	0.525
9	1 0.100	3 0.300	1 0.000	1 0.075	1 0.000	0 0.000	0.475
41	2 0.200	2 0.200	1 0.000	1 0.075	1 0.000	0 0.000	0.475
50	2 0.200	1 0.100	1 0.000	2 0.150	1 0.000	0 0.000	0.450
23	1 0.100	1 0.100	1 0.000	3 0.225	1 0.000	0 0.000	0.425
20	2 0.200	1 0.100	1 0.000	1 0.075	1 0.000	0 0.000	0.375

Decision Rule 6: Required by local, state, or federal law or other agreements.

Chehalis Basin Prioritization Process

100% Weight to Decision Rule 1

Chehalis Watershed Partnership Decision Model: WMP Actions (Objectives)

	Decision Rule 1	Decision Rule 2	Decision Rule 3	Decision Rule 4	Decision Rule 5	Decision Rule 6	Total Weight/Score
Weight (%)	100%	0%	0%	0%	0%	0%	100%
Basis of Ranking	High = 3 Medium = 2 Low = 1	Range = 4 High to 1 Low	Short-term = 1 Long-term = 0	High = 3 Medium = 2 Low = 1	Long-term = 1 Short-term = 0	Yes = 1 No = 0	
WMP Action #	score	score	score	score	score	score	Objective sort
7	3 1.500	4 0.000	1 0.000	2 0.000	1 0.000	0 0.000	1.500
1	3 1.500	1 0.000	1 0.000	3 0.000	1 0.000	0 0.000	1.500
21	3 1.500	1 0.000	1 0.000	3 0.000	1 0.000	0 0.000	1.500
54	3 1.500	1 0.000	1 0.000	3 0.000	1 0.000	0 0.000	1.500
47	3 1.500	1 0.000	1 0.000	2 0.000	1 0.000	0 0.000	1.500
3	3 1.500	1 0.000	1 0.000	2 0.000	0 0.000	0 0.000	1.500
36	2 1.000	3 0.000	1 0.000	3 0.000	1 0.000	1 0.000	1.000
31	2 1.000	1 0.000	1 0.000	3 0.000	1 0.000	1 0.000	1.000
53	2 1.000	1 0.000	1 0.000	3 0.000	2 0.000	1 0.000	1.000
38	2 1.000	1 0.000	1 0.000	2 0.000	1 0.000	1 0.000	1.000
25	2 1.000	1 0.000	1 0.000	3 0.000	1 0.000	0 0.000	1.000
48	2 1.000	1 0.000	1 0.000	3 0.000	1 0.000	0 0.000	1.000
50	2 1.000	1 0.000	1 0.000	2 0.000	1 0.000	0 0.000	1.000
41	2 1.000	2 0.000	1 0.000	1 0.000	1 0.000	0 0.000	1.000
20	2 1.000	1 0.000	1 0.000	1 0.000	1 0.000	0 0.000	1.000
23	1 0.500	1 0.000	1 0.000	3 0.000	1 0.000	0 0.000	0.500
10	1 0.500	2 0.000	0 0.000	2 0.000	1 0.000	1 0.000	0.500
9	1 0.500	3 0.000	1 0.000	1 0.000	1 0.000	0 0.000	0.500

Decision Rule 1: Is it a primary objective?

Prioritization Results

Weight (%) Basis of Ranking Equal Weight	Weight (%) Basis of Ranking Weights 2 1> and 2>	Weight (%) Basis of Ranking Weights 3 3 and 5 = 0	Weight (%) Basis of Ranking Weight 4 3 and 5 = 0, 6>	Weight (%) Basis of Ranking Weight 5 increase 6	Weight (%) Basis of Ranking Weight 6 100% rule 1
WMP Action #	WMP Action #	WMP Action #	WMP Action #	WMP Action #	WMP Action #
36	7	7	7	36	7
7	36	36	36	31	1
31	1	1	1	53	21
53	21	21	21	7	54
1	54	54	54	38	47
21	47	31	31	10	3
54	31	53	53	1	36
38	53	3	47	21	31
47	25	47	25	54	53
25	48	38	48	47	38
48	38	10	38	3	25
50	3	25	9	25	48
23	41	48	41	48	50
41	50	41	3	9	41
10	9	50	50	41	20
9	20	9	23	50	23
20	23	20	20	23	10
3	10	23	10	20	9

How Prioritizing Objectives Helped to Clarify Tasks

WMP Actions (Objectives)		Proposed Tasks
WMP Action # (Column B Priority = Highest to Lowest)		
36	Develop approaches to keep forestry and agriculture on the land. Clarifying point that this is more an issue about infiltration than runoff.	1. Inventory of properties (where are designated ag lands?) and mapping. 2. Determine which lands are at risk and/or provide opportunity for protection. 3. Gap analysis of existing incentives and programs. 4. Public Outreach 5. Deliver program activities. 6. Outcome measurement. (Requires database capabilities)
31	Protect healthy waters of the Chehalis Basin so they do not become impaired or need Total Maximum Daily Load (TMDL) reporting.	[Refer to 45, 44, 43, 41, 42, 37, 35, 34, 32, 31, 8] 1. Inventory of all waters. 2a. Establish monitoring and gather and interpret data. 2b. Determine which waters are at risk and/or provide opportunity for protection. 3. Gap analysis of existing programs and determine their effectiveness 4. Identify activities that would reduce risk of waters becoming unhealthy. 5. Improve stormwater functions. 6. Public Outreach 7. Deliver program activities 8. Outcome measurement. (Requires database capabilities)
53	Current regulatory flows should be retained; the Partnership wishes to preserve the 1976 priority date for those flow levels. Goals would fall under Water Quantity Goals.	Send Letter to Department of Ecology (Completed), GO TO> Action #54
7	Recommend adequate funding level for water resources management (source to be determined; funding to be distributed to those entities involved in water resources management). What activities does this encompass and what will be done? Who would be involved? This is similar to Action 1? Made both actions objectives because they are general and then identify tasks.	[Refer to Action 18, 22, 37] 1. Plan 2 Fund Development to identify required funding to accomplish WMP. 2. Decide whether to establish a separate legal organization capable of receiving public and/or private funds (such as a 501c3 organization, or Lower Columbia Basin Commission) for functions and activities. 3. Establish MOUs and MOAs for enhancing partnerships. 4. Develop strategies for maximum coordination with partners and for leveraging financial and political resources. 5. Expand the public information strategy (see P. IV-127).
38	Prevent the introduction of detrimental plant and animal species (aquatic and terrestrial) and control or eliminate species designated by the state or county as noxious, invasive, quarantined, or nuisance species.	[Refer to 31] 1. Gap analysis of existing incentives and programs [e.g., Multi-County Noxious Weeds Coalition] 2. Obtain and/or develop mapping of current infestations. 3. Determine which waters are at risk and/or provide opportunity for protection. 4. Support Public Outreach 5. Deliver program activities. 6. Outcome measurement.

Chehalis Basin Partnership

Where they are now....



Questions



Now that we know what we
want to do...

How do we pay for it?



Community Assets and Local Resources



Who are the different stakeholders who can contribute to a watershed financing plan?

Local Fundraising

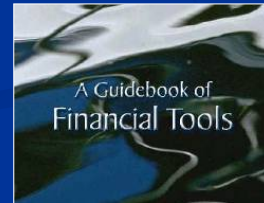


- Local fundraising campaigns have the dual benefit of raising revenues and raising awareness of the watershed initiatives.
- Since administrative costs seem to be the hardest to meet, local fundraising efforts can raise the funds needed for administrative purposes.



The Guidebook of Financial Tools

- Tools for Raising Revenue
- Tools For Acquiring Capital
- Tools For Enhancing Credit
- Tools for Building Public Private Partnerships



Directory of Watershed Resources

Federal Funding Programs
State Funding Programs
Private Funding Programs

*Directory
of Watershed
Resources*

Directory of Watershed Resources

*Directory
of Watershed
Resources*

A Searchable Database of Funding Sources

- Search Our Database
- Contact Us
- About Us
- About the Directory
- Watershed Tools and Links
- Add or Update Program Information

EFCN
environmental finance center network



Search for Funding

Search our Database



[Home](#) | [Search our Database](#) | [Contact Us](#) | [About Us](#) | [About the Directory](#) | [Watershed Tools and Links](#) | [Add or Update Program Information](#)

Search our Database

The Directory of Watershed Resources is a searchable database of resources available to assist with a variety of environmental projects. The database includes information on federal, state, private, and other funding sources and assistance. Users can search for programs through a targeted search, keyword search or through an index of federal, state and private sources.

The Directory currently includes funding information for the following states: Alaska, Connecticut, Idaho, Maine, Massachusetts, New Hampshire, Oregon, Rhode Island, Vermont and Washington. To view funding information for states not included in this database, visit http://sspa.boisestate.edu/efc/Tools_Services/Directory/funding.htm or contact an EFC in your region.

Select the Type of Search:

- ☐ Targeted Search
- ☐ Keyword Search
- ☐ Index of Federal / Interstate Agency Sources
- ☐ Index of State Agency Sources
- ☐ Index of Private / Foundation Sources

Search for Funding

Search our Database



[Home](#) | [Search our Database](#) | [Contact Us](#) | [About Us](#) | [About the Directory](#) | [Watershed Tools and Links](#) | [Add or Update Program Info](#)

[Back to Search Options](#)

Results 1 through 10 of 1089

[Next >>](#)

[*319\(h\) Nonpoint Source Pollution \(NPS\) Abatement Grants, Rhode Island Department of Environmental Management - Office of Water Resources*](#)

[*319\(h\) Nonpoint Source Pollution Grants, New Hampshire Department of Environmental Services*](#)

[*319\(h\) Nonpoint Source Pollution Projects, Vermont Agency of Natural Resources*](#)

[*A. V. Stout Fund*](#)

[*Abandoned Mine Land Reclamation Program, U. S. Dept. of Interior*](#)

[*Abbott Laboratories Fund*](#)

[*Abelard Foundation West / Common Counsel Foundation*](#)


[*Access & Habitat Program, Oregon Department of Fish & Wildlife*](#)

[*Acid Mine Drainage Grant, U.S. Dept. of Interior*](#)

[*Acorn Foundation/Common Counsel Foundation*](#)

[Next >>](#)





Water Quality Sampling

Water Quality Sampling at a Watershed Scale
[Water Quality Sampling at a Watershed Scale](#) | [Water Quality Sampling at a Watershed Scale](#) | [Water Quality Sampling at a Watershed Scale](#)

U.S. Environmental Protection Agency

Home

About Us

How to Use This Site

Complete List of All Programs

Programs listed by Region

Programs listed by State

Programs listed by Watershed

Catalog of Federal Funding Sources for Watershed Protection

The Catalog of Federal Funding Sources for Watershed Protection Web site is a searchable database of federal assistance sources (grants, loans, cost sharing, etc.) available to watershed protection and water quality programs. For particular requirements, use either of two search boxes. One is based on subject matter criteria, and the other is based on words in the title of the program.

Criteria searches include the type of organization (e.g., non-government, private landowner, state, business), type of assistance sought (grants or loans), and keywords (e.g., agriculture, wildlife habitat, water quality).

Searches result in a listing of programs by name. Click on each program name to review detailed information on the funding source.

Available Resources

Source or link to a listing on the Internet of the funding source (e.g., [Water Quality Sampling at a Watershed Scale](#), [Water Quality Sampling at a Watershed Scale](#), [Water Quality Sampling at a Watershed Scale](#))

State of the art information on the use of the funding source (e.g., [Water Quality Sampling at a Watershed Scale](#), [Water Quality Sampling at a Watershed Scale](#), [Water Quality Sampling at a Watershed Scale](#))

State of the art information on the use of the funding source (e.g., [Water Quality Sampling at a Watershed Scale](#), [Water Quality Sampling at a Watershed Scale](#), [Water Quality Sampling at a Watershed Scale](#))

State of the art information on the use of the funding source (e.g., [Water Quality Sampling at a Watershed Scale](#), [Water Quality Sampling at a Watershed Scale](#), [Water Quality Sampling at a Watershed Scale](#))

1

2

3

4

Type of Assistance:

☐ Grants
 ☐ Loans
 ☐ Technical

Eligible Organization:

Match Required:

☐ Yes
 ☐ No

Keywords:

☐ Air Quality/Exposition
 ☐ Agriculture
 ☐ Best Management Practices
 ☐ Coastal Waters
 ☐ Drinking water
 ☐ Economic Development
 ☐ Enforcement/Compliance
 ☐ Fisheries
 ☐ Food/Plant/Plant/Plant
 ☐ Forests
 ☐ Great Lakes
 ☐ Invasive Species
 ☐ Land Acquisition
 ☐ Monitoring
 ☐ Nonpoint Source Control

☐ Outwash/Erosion
 ☐ Pathways
 ☐ Point Source Control
 ☐ Pollution
 ☐ Pollution Prevention
 ☐ Research
 ☐ Restoration
 ☐ Solid Waste
 ☐ Source Water Protection
 ☐ Stormwater Management
 ☐ Wastewater
 ☐ Watershed Management
 ☐ Wetlands
 ☐ Wildlife Habitat

(If no keyword is selected, search will include all keywords)

Get Results in List Format

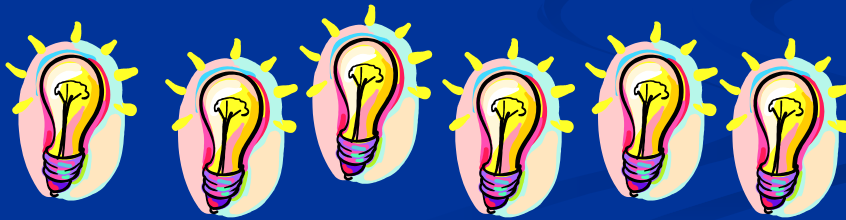
Get Results in Table Format

Search by Title [Type search keywords/criteria search]

Type is worded in the title of the funding program:

Get Results

Our belief is that even if one innovative financing idea may not be appropriate for a community, it may spark ideas, and discussion about priorities and needs and other ways of addressing issues.



Questions



- **Plan2Fund**

http://sspa.boisestate.edu/efc/Tools_Services/Plan2Fund/plan2fund.htm

- **Environmental Finance Center
Directory of Watershed Resources**

<http://efc.boisestate.edu/>

- **EPA's Catalog of Federal Funding
Sources for Watershed Protection**

www.epa.gov/watershedfunding



Plan2Fund: A Tool to Organize Your Watershed Funding



*Bill Jarocki
Environmental Finance Center
Boise State University*

*Amy Williams
Environmental Finance Center
Boise State University*

*Lee Napier
Grays Harbor County
Chehalis Basin Partnership*



105