



Welcome to the CLU-IN Internet Seminar

Brownfields Nonprofit Outreach Training

Sponsored by: Brownfields Region 6

Delivered: July 6, 2010, 1:00 PM - 3:00 PM, EDT (17:00-19:00 GMT)

Instructors: Dr. Harold Ledford, Center for Community Renewal (haroldledford@communityrenewal.us)

Camisha Scott Marshall, U.S. EPA Region 6 (scott.camisha@epa.gov)

Sam Reynolds, U.S. EPA Region 6 (reynolds.samuel@epa.gov)

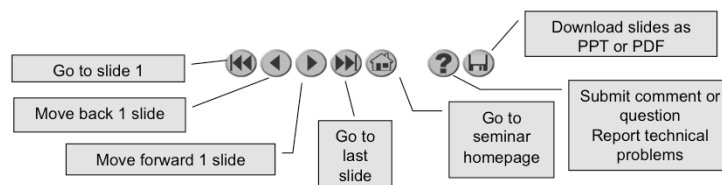
David Reel, U.S. Corps of Engineers (reel.david@epa.gov)

Moderator: Jean Balent, U.S. EPA, Technology Innovation and Field Services Division (balent.jean@epa.gov)

Visit the Clean Up Information Network online at www.cluin.org 1

Housekeeping

- Please mute your phone lines, Do NOT put this call on hold
 - press *6 to mute #6 to unmute your lines at anytime
- Q&A
- Turn off any pop-up blockers
- Move through slides using # links on left or buttons



- This event is being recorded
- Archives accessed for free <http://clu-in.org/live/archive/>

2

Although I'm sure that some of you have these rules memorized from previous CLU-IN events, let's run through them quickly for our new participants.

Please mute your phone lines during the seminar to minimize disruption and background noise. If you do not have a mute button, press *6 to mute #6 to unmute your lines at anytime. Also, please do NOT put this call on hold as this may bring delightful, but unwanted background music over the lines and interrupt the seminar.

You should note that throughout the seminar, we will ask for your feedback. You do not need to wait for Q&A breaks to ask questions or provide comments. To submit comments/questions and report technical problems, please use the ? Icon at the top of your screen. You can move forward/backward in the slides by using the single arrow buttons (left moves back 1 slide, right moves advances 1 slide). The double arrowed buttons will take you to 1st and last slides respectively. You may also advance to any slide using the numbered links that appear on the left side of your screen. The button with a house icon will take you back to main seminar page which displays our agenda, speaker information, links to the slides and additional resources. Lastly, the button with a computer disc can be used to download and save today's presentation materials.

With that, please move to slide 3.



Brownfields

**Challenging our Communities
in a Changing World**



Purpose

- The purpose of this presentation is to provide an overview of the Brownfields Program specifically targeting the Non Profit Community.
- The topics of discussion includes:
 - Definition and Examples of Brownfields
 - Program Resources Available to Non-Profits
 - Program Criteria specifically for Non-Profits



What are Brownfields?

Small Business Liability Relief and
Brownfields Revitalization Act

○ **Amends CERCLA** by:

- Providing grants to assess and cleanup sites
- Providing liability exemptions



Defines brownfields as:

- “...real property, the expansion, redevelopment or reuse of which may be complicated by the presence or potential presence of a hazardous substance, pollutant, or contaminant.”

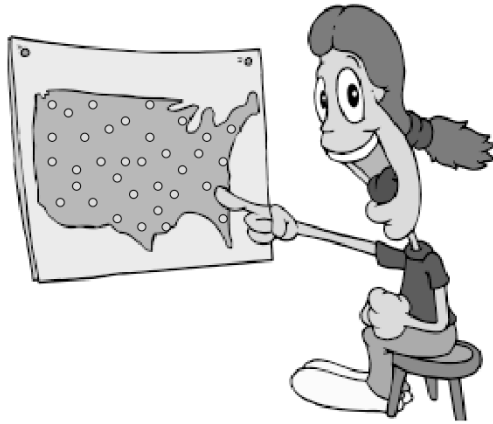
6

BF Act is actually an amendment to CERCLA - Comprehensive Environmental Response, Compensation and Liability Act. CERCLA has very strong liability language which is often a deterrent to redevelopment of sites, as we talked about earlier. The BF Act amends CERCLA to alleviate some of those liability concerns.

Current funding level is around \$75M

The Brownfields Gamut

There are an estimated 450,000 brownfields sites nationwide!



What Do Brownfields Look Like?





More Brownfields



The Brownfields Impact



Economic

Decreased
property
values and
city tax
revenues

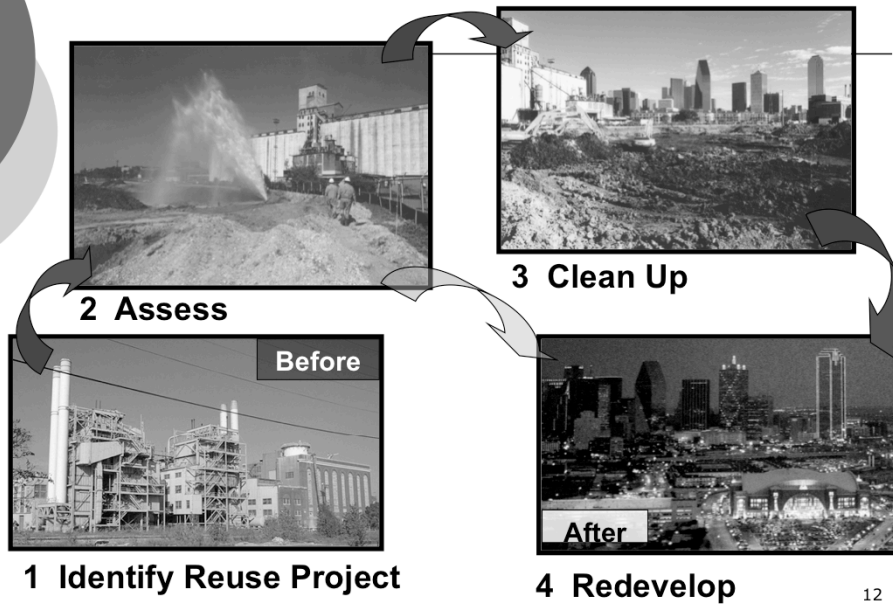
Social

Increased
urban sprawl
and inner
city blight

Environment

Potential
threats to
human health
and the
environment

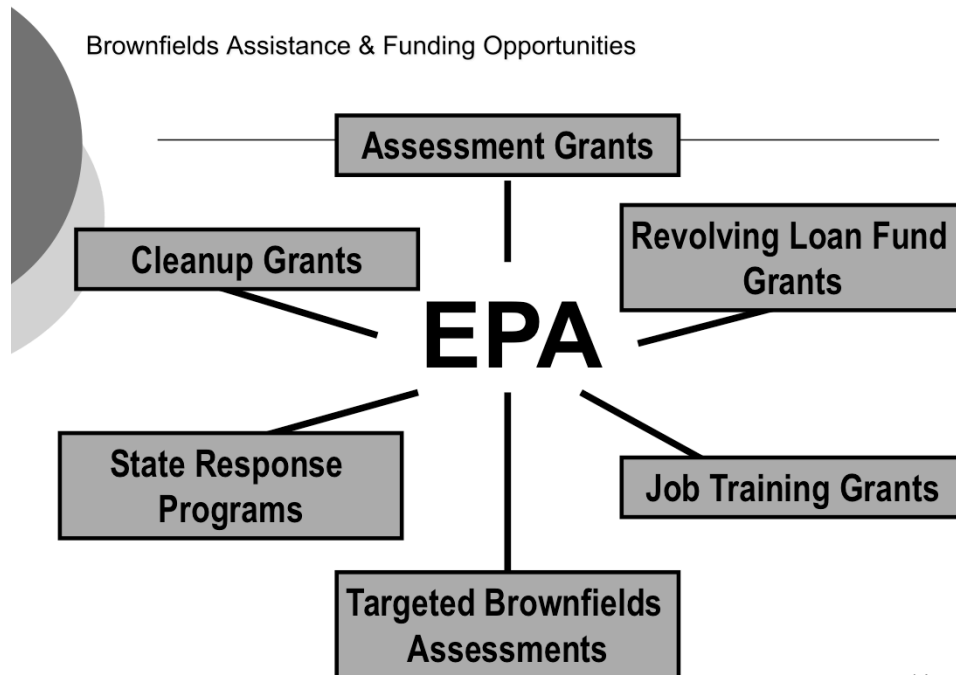
Brownfields Project Cycle

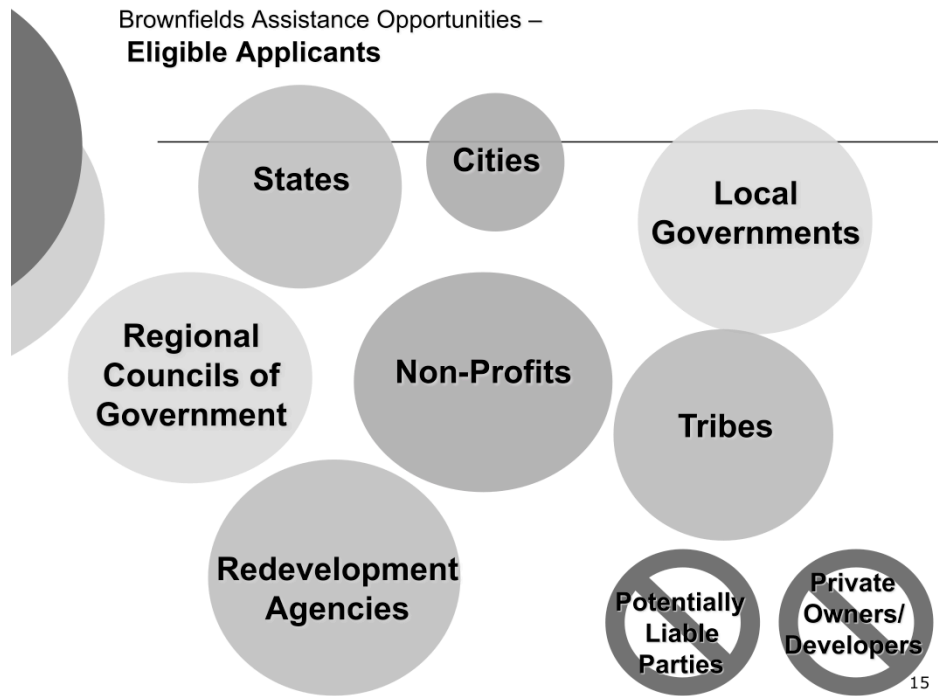




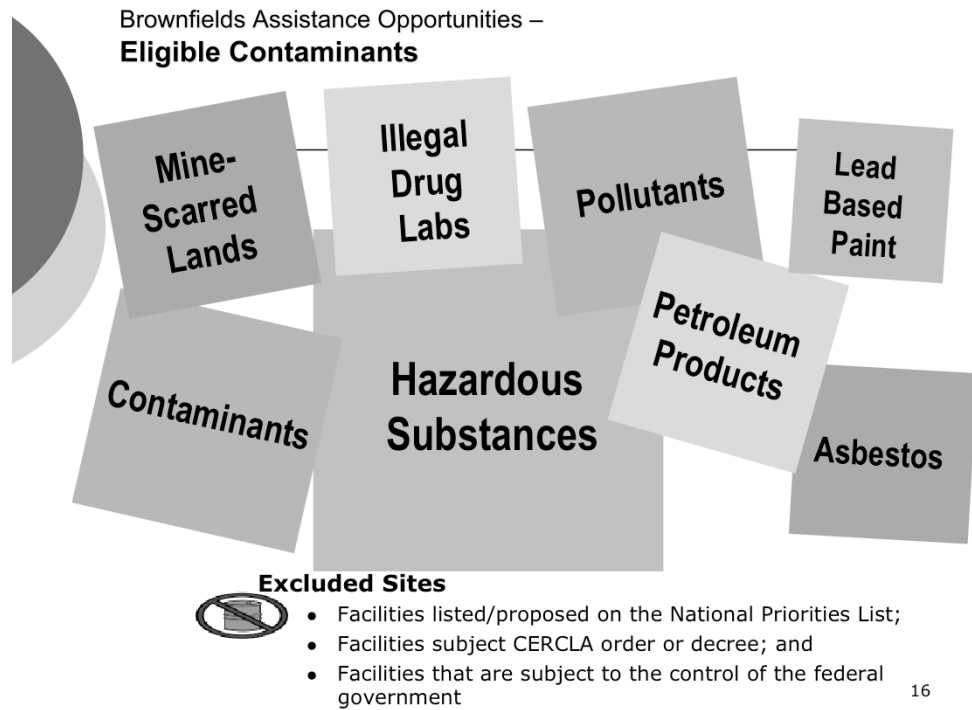
Brownfields Resources Available

Brownfields Assistance & Funding Opportunities





Since you're here, you guys must be eligible applicants with eligible sites! But just FYI . . .



Who's not eligible? Basically responsible parties and private owners.

What sites aren't eligible? Key words – NPL, any kind of state, federal or court order sites, and any site owned by the federal gov't

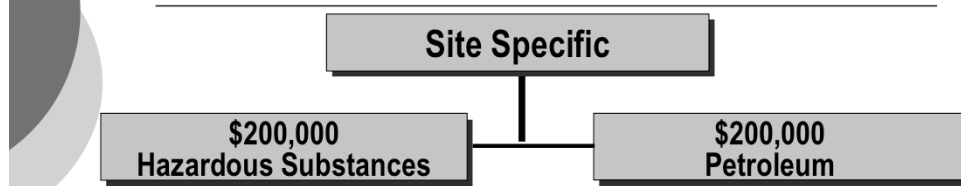
Brownfields Job Training Grants

\$200,000

- Non-profits eligible
- For environmental training and employment



Brownfields **Cleanup** Grants



- Applicant can not be potentially liable for contamination under CERCLA
- Non-profit organizations are eligible to apply
- Applicants may apply for funding at up to three sites
- Maximum funding per entity: \$600,000
- 3 year performance period
- 20% Cost Share

Example eligible activities:

- ✓ Cleanup
- ✓ Confirmatory sampling **ONLY**



Brownfields **Cleanup** Grants

- Prior to Clean up Grant proposal submittal:
 - Non profit must have EPA approved Phase I and Phase II
 - ESA's must conform to EPA's All Appropriate Inquiries (AAI) or ASTM format
 - Cost for assessments can be up to \$100K

- ESA Funding Options:
 - ❖ Non profits can fund ESA themselves or
 - ❖ Non profits may secure free ESA services from:
 - Local Brownfields Assessment Grantee
 - State Brownfields Program
 - EPA R6 Brownfields Program

FREE SERVICES

Targeted Brownfields Assessments (TBA)

➤ EPA and/or States provides Environmental Site Assessment to local governments and non profits

- Inventories – compiles a list of possible properties
- Phase I- a report prepared which identifies potential or existing environmental contamination liabilities
- Phase II – the purpose is to evaluate the recognized environmental conditions identified in the Phase I ESA through a sampling of the site
- Cleanup planning activities
- Provided on a year round basis





How to request a Targeted Brownfields Assessment

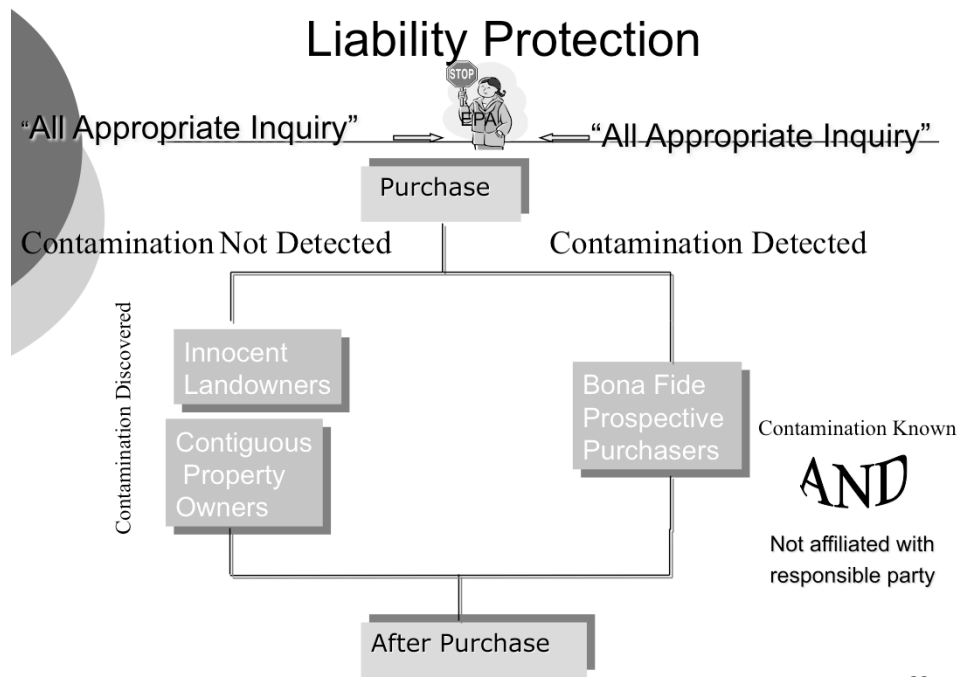
- Submit request to EPA R6 Brownfields Section Chief

Smith.monica@epa.gov

- EPA evaluates/approves request
- Environmental Site Assessment is performed
- Final report is issued to non-profit

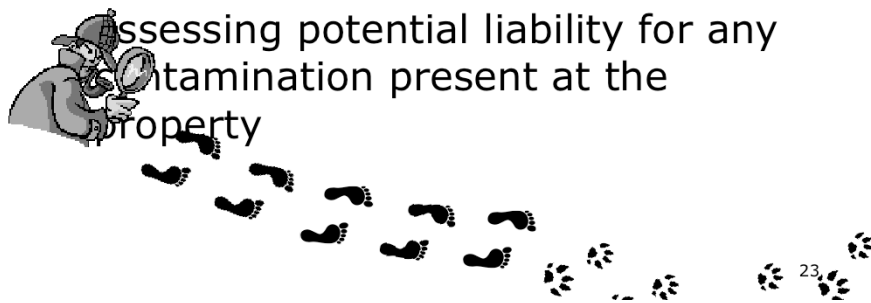
Note: EPA will offer the States or local Brownfields Assessment Programs the right of first refusal before performing the requested ESA.

21



ALL APPROPRIATE INQUIRY = Phase I Environmental Site Assessment

All Appropriate Inquiry (AAI) or Phase I environmental site assessment (ESA) is the process of evaluating a property for potential environmental contamination and assessing potential liability for any contamination present at the property





AAI=PHASE I ESA WHEN?

- BEFORE acquiring the property
- Conducted or updated within 1 **YEAR** prior to acquisition
- Update within 180 **DAYS** prior to acquisition





Brownfields Benefits

25

The Benefits of Brownfields

- Revitalize Communities
- Create Jobs and Local Revenue
- Remove Blight
- Protect the Environment

*** Each \$1 invested in Brownfields funding leverages \$2.50 in redevelopment!**



26

Creation of employment - According to a survey by the U.S. Conference of Mayors, 187 of 231 cities responded that cleaning up existing brownfields sites could generate as many as 540,000 new jobs if the land were returned to production.

Increased local revenue - Encouraging development on existing, unoccupied sites has the potential not only to rejuvenate local tax revenue, but to spawn additional development of nearby underused properties.

Revitalize urban areas - Because of their locations, brownfields promote the infill and mixed-use development of smart growth

Removal of urban eyesores – Perception of contamination; Brownfields cleanup removes signs of decay

Protection of existing greenspaces – creating incentives to attract development on existing sites curbs the urge to develop pristine areas

Improved cmty health – Curbs illegal dumping; cleanup removes potential public health threat of contamination



Cost Share Requirements



Cost Share Requirement

- Cost Share of 20% Required For
 - Brownfields Cleanup
 - Hardship Waiver available for match
- Cost Share connected to the Environmental Cleanup
- The grant recipient contributes cash or in-kind resources for cleanup cost share



Brownfields Criteria Applicable to Non Profits



Guidance and Resources

- Regulations 40 CFR 30.23 – Cost Share
- National Proposal Guidelines, Appendix 2
- OMB Cost Principles, A-122 Non-profits



What Determines Eligible Cost Share?

- Reasonable
- Allocable
- Necessary (Project Objectives)
- Not Prohibited
- Not Federal
 - Unless Federal Program Has Provision to Allow
- Not Other Federal Grant Cost Share
- Verifiable (e.g., documented)
- In Budget



What are Eligible Cost Share Resources?

- Cash
- Non-Federal Grants
- Labor
- Material
- Supplies
- Services



Highlights

- What is a BF
- What is the Impact
 - Social, Economic and Environmental
- Project Cycle
 - Identify, assess, cleanup, redevelopment
- Eligible Programs/ Services for Non profits
 - Job Training
 - Cleanup
 - TBA
- Types of Contaminants
 - LBP, Hazardous, Petroleum,
 - Asbestos, Mine scarred lands
 - Illegal drug labs
- Cleanup requires 20% match
- Cost Share is not from grant
- Remember to refer to the regulations or EPA for clarification
- Cost Eligibility
 - Reasonable
 - Allocable

33



Brownfields Grant Competition

- **General Brownfields (ARC) Grant Schedule**
 - Expected Guidelines posted August XX, 2010:
<http://www.epa.gov/swerosps/bf/applicat.htm>
 - Proposals Due October XX, 2010
 - Selections Spring 2011
 - Award Summer 2011

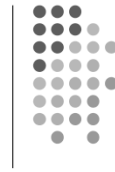
- **Questions?**
 - Monica Smith, Brownfields Section Chief
214-665-6780 or via email smith.monica@epa.gov
 - 1-800-533-3508 and ask for the Brownfields Team

National Center for Community Renewal



Green Building for
Renewing Communities





Who we are:



Community Renewal International, Inc.



- CRI is a non-profit comprehensive community initiative working to reverse the disintegration of cities by helping to restore safe neighborhoods through caring relationships
- This model for increasing social capital systematically rebuilds the system of caring relationships as efficient and effective platforms in neighborhoods.

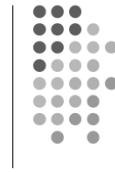


Community Renewal International



- CRI's model has three primary strategies designed to bring about environments that nurture whole persons:
 - Renewal Team
 - Haven House
 - Friendship House





Our situation:



National Center for Community Renewal



Goals

- Dissemination of the CRI program model
- Being a catalyst for renewal through sustainable design
- Economic development



National Center for Community Renewal



- **Expected Outcomes**

- New industry of “social technology”
- Dissemination of a working model
- Training and support
- Academic certification
- Curricula/internships
- On-site and distance learning
- Research
- Better communities



National Center for Community Renewal



Why Build Green?

In the United States, buildings account for:

- 36% of total energy use
- 65% of electricity consumption
- 30% of greenhouse gas emissions
- 30% of raw materials used
- 30% of waste output (136 million tons annually)
- 12% of potable water consumption

Environmental benefits:

- Enhance and protect ecosystems and biodiversity
- Improve air and water quality
- Reduce solid waste
- Conserve natural resources

Economic benefits:

- Reduced operating costs
- Enhanced asset value and profits
- Improved employee productivity and satisfaction
- Optimized life-cycle economic performance

Health and community benefits:

- Improved air, thermal, and acoustic environments
- Enhanced occupant comfort and health
- Minimized strain on local infrastructure
- Contribution to overall quality of life





Our plan and how we carried it out:



NATIONAL CENTER FOR COMMUNITY RENEWAL
PHASED PLANNING EFFORT



Phase One—Abatement and demolition process for asbestos and other hazardous waste. **COMPLETED**

Phase Two—replication model development, overall curriculum framework, fund-raising plan development and implementation design, launching Marketing for National Center, plan development **ONGOING**

- Phase Three**
- Design completion **ONGOING**
 - Curriculum development **ONGOING**
 - Initiate National Center training **ONGOING**
 - Replication design **ONGOING**
 - Selection of contractor **ONGOING**
 - Marketing for National Center **ONGOING**

Phase Four—construction

Phase Five—move in and operation

*Currently \$2.77 million secured for Phase I and Phase II

National Center for Community Renewal



- To accomplish Phase I—remediation and demolition, CRI:
 - Attended Annual Region VI EPA Brownfields Partners Forum
 - Attended Louisiana EPA Brownfields workshop
 - Communicated extensively with the project manager from Region VI and the City of Shreveport Brownfields Coordinator
 - Issued an RFP for Phase II Assessment and a project manager using HUD/EDI funds
 - Selected ALTEC Environmental Consultants, Inc. for the assessment and as project manager
 - Utilized EPA Brownfields Training grant through the City of Shreveport and Southern University, Shreveport to train hurricane evacuees and local at-risk individuals as certified abatement workers and employed them in the building for real-life experience





How we used outside funding to support Phase I:

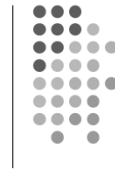


National Center for Community Renewal



How CRI utilized outside funding to support Phase I:





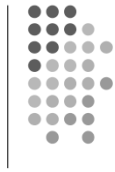
Results to date:



National Center for Community Renewal

- 1670 cubic yards
or 56 truckloads of
friable and non-
friable asbestos
waste
- 6260 cubic yards
or 209 truckloads
of construction
debris
- 32,420 man-hours





Next Steps:

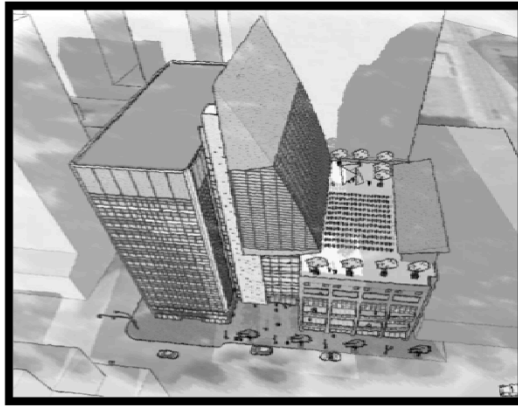


National Center for Community Renewal



- **Vision**

- Housing
- Training facilities
- Technical support



Concept Study for
National Center for Community Renewal
Elevation, section and form studies
MHSM Architects
3.24.06



National Center for Community Renewal

Parameters for design

- The building must reflect a sustainable and renewable concept in all of its functions.
 - **Energy production** will be renewable and sustainable
 - **Internal environment** will be safe and sustainable
 - **Individual work and living environments** will be healthy and safe
 - **Building operation and maintenance** will be environmentally sound and sustainable
 - **Teaching/Meeting spaces** will be on-site and virtual
 - **Structure and functioning** will lead to the training of others in the CRI model both on-site and virtually
 - **Promote community enhancement** of downtown Shreveport in terms of economic and workforce development.



National Center for Community Renewal



- **Green building technologies to be featured:**

- Roof top gardens
- Rain water capture and recycling
- Recycled building materials
- Solar/photovoltaic energy systems
- Biodiesel energy system
- Wind generated system within building
- 'Smart' light and climate controls
- 'Smart' training areas and residential rooms



National Center for Community Renewal



- **Building will be for mixed use:**
 - Training facilities
 - Meeting rooms
 - Library/resource center
 - Hotel/dormitory rooms for extended training/conferences
 - Corporate offices
 - Small retail on ground floor



National Center for Community Renewal



Funding Formula

Major Focus:

- The Model/Programs/Replication
- Sustainable LEED Certified Green Building
- Training and Certification Programs
- Product Donations/Partnerships with Corporations—20%
- Grants from Private Corporations/Individuals—20%
- Government Funding—10%
- Grants from Foundations—20%
- Tax credits—30%



National Center for Community Renewal



Replication Efforts

The CRI model has been completely replicated in Abilene, Texas, by the non-profit Connecting Caring Communities. Groups in Minneapolis, MN; New Orleans; Doumbouo, Cameroon, Africa; and other cities are in various stages of replication.



National Center for Community Renewal



Program Efforts

- Trainings—Individuals from over 50 cities and three foreign countries, including 38 cities in Region VI's five states have attended CRI's workshops in Shreveport to observe the model in action
- Curricula—under development through congressional appropriation through HHS
- Evaluations—ongoing yearly
- Websites-www.communityrenewal.us, crigreen.org, africarenewal.us
- Tours—over 3000 individuals have toured the CRI sites, getting an overview of the CRI model





Virtual tour— National Center for Community Renewal

<http://www.youtube.com/watch?v=pbvrHZjCqI0>



58

National Center for Community Renewal



For more information:

Dr. Harold Ledford
P. O. Box 4678
Shreveport LA 71134
318-425-3222
Fax 318-425-8999
haroldledford@communityrenewal.us
www.communityrenewal.us



FY 11 Workforce Development and Job Training Grant Program : For Non-Profit Organizations



Presented by U.S. EPA Region 6
July 6, 2010

When and Why was the Job Training Program Established



- The Job Training Program was established in the early 1990s.
- EPA staff discovered that many communities affected by environmentally contaminated sites were not benefiting from the jobs created from site cleanup due to lack of environmental training in the local workforce.
- EPA designed its Job Training program to help ensure that graduates would benefit from local job opportunities.

Process and Statistics



- EPA awards competitive grants to develop environmental cleanup and health and safety training programs for unemployed and underemployed, predominately low-income and minority residents of brownfields-impacted communities.
- **To date**, EPA has funded 169 Brownfields Job Training grants totaling over \$35 million.
- **As of June 2010**, more than 5,800 people have completed training, over 3,800 have obtained employment in the environmental field, with an average starting hourly wage of \$14.65.

**Non-Profit and Public/or Non-Profit
Private Educational Institution
Partnering Strongly Encouraged**



As a Non-Profit we strongly encourage you partner with a educational institution.

The educational institution will be responsible for helping establish and implementing the curriculum and also provide the necessary instructors required for your job training program.

Community Benefits/No Cost Share



- Promotes your community goals of sustainable land reuse and environmental protection, through cleanup of site contamination and sustainable redevelopment of brownfields.
- Graduates apply knowledge and skills learned by obtaining environmental jobs to help clean up the communities contaminates properties.
- There is no cost share requirement for this grant!

Overall Community Benefits to Program



- Promotes partnerships by seeking input from local stakeholders—including workforce development entities and representatives from private industry.
- Strengthens community bonds and produce graduates that are attractive to local employers.

Brownfields Job Training Grants The Competition Process



EPA awards 12-13 Brownfields Job Training grants each year

Maximum value for each grant is \$200,000

The Statistics!

1 out of 4 proposals are funded

90% of unfunded proposals are funded upon re-applying

FY 11 Workforce Development and Job Training Program

The American Recovery and Reinvestment Act of 2009 includes a provision granting \$100 million to the EPA Brownfields Program for clean up, revitalization, and sustainable reuse of contaminated properties. Job Training grants are a key component of funds being awarded.

On March 19, 2009, EPA issued a request for applications (RFA) from eligible governmental entities and nonprofit organizations to provide environmental job training projects that will facilitate job creation in the assessment, remediation, or preparation of brownfields sites for sustainable reuse. The closing date for receipt of applications is April 20, 2009.

Types of jobs Obtained After Graduation



Environmental Technician
Air Quality Technician
Emergency Response Technician
Energy Conservation Specialist
GIS Technician
Forklift Operator
Health & Safety Technician/Trainer
Biotechnology Technician/Analyst
Sampling/Calibration/Analysis Technician
Wastewater Treatment Plant Operator
Hazardous Materials Transporter
Treatment, Storage, & Disposal Facility Technician
Construction/plumber/electrician

Workforce and Development Job Training Program Required Core Curriculum !



Required Core Curriculum!

Occupational Safety And Health Administration (OSHA) Hazardous Waste Operations and Emergency Response (HAZWOPER)

Lead Renovation, Repair and Paint (RRP)

Underground Storage Tank Leak Prevention

Solid Waste Management or Cleanup Related Training

(Recycling, Landfill Remediation and Capping, Demolition and Debris Collection, etc.)

Innovative and Alternative Treatment Technologies (Solar Installation, Green Remediation Technologies, Phytoremediation, Soil Amendments etc.)

Workforce and Development Job Training Non-Required Training



Non-Required Training Examples:

Mold Remediation

Energy Auditing

Weatherization

Heavy Machinery Operations

Industrial and Oil Spill Response

Native Plant Revegetation

Low-Impact Development

Green Building Design

Los Angeles Conservation Corps Success Story



Students learn asbestos remediation within a "decontamination station"

- Teamed with a local trade college and a Non-Profit Organization and trained students in renewable energy, such as , solar power, weatherization.
- Completed 5 training sessions, graduated over 175 students, 85% placement rate.

JFYNetworks Boston, MA. EPA Job Training Program Success Story



Students performing job training at JFY NetWorks in Boston.

- Provides 3 types of environmental training, cleanup, renewable energy, and weatherization.
- To Date, has produced 330 graduates, 80% to 90% placement rate.
- Average entry- level job pays \$27.000 per year.

King County Work Training Program Success Story



Students of the King County Work Training Program participate in HAZMAT training

- Job Training Program provides a 238-hour curriculum, which includes HAZWOPER and Bioremediation.
- Graduated over 260 students, of whom 183 have been placed in jobs with wages ranging from \$12-\$35 per hour.

Southern University at Shreveport Louisiana Success Story



Hazwoper Training in Progress

- SUSLA has received 2 EPA Job Training Awards to Date.
- SUSLA has conducted several 8 week courses over a 4 year period.
- SUSLA has graduated 68 students and has placed 50 students into environmental jobs.

Goodwill Industries New Orleans, LA. Success Story



Student receiving hands-on training installing a radiant barrier in a New Orleans home

- Goodwill received a Job Training Grant in 2008.
- Goodwill trained over 50 students in environmental skills including HAZWOPER and Weatherization.
- Goodwill graduated 46 students and placed 39 students in environmental Jobs.

Limitless Vistas New Orleans 2009 Job Training Award Associated Press Announcement



EPA grant teaches youth about environmental skills

Associated Press - April 10, 2010 1:44 PM ET

NEW ORLEANS (AP) - The federal Environmental Protection Agency has issued a \$200,000 grant for a New Orleans company to teach inner-city youth job skills aimed at employing them in the environmental industry.

Limitless Vistas Inc. plans to train 40 students with the goal of placing at least 80 percent of them in environmental jobs. The company will track their progress over the next year.

The students will be trained in hazardous waste management, weatherization, construction safety, removing asbestos and abatement of lead and mold.

Additional training will come from environmental contractors. Limitless Vistas will assist in job placement.

**Limitless Vistas Job Training
Ceremony, Lisa Jackson, EPA
Administrator Speaking**



Web-based Resources



EPA Brownfields Job Training Information: www.epa.gov/brownfields/job.htm

Guidelines

Frequently Asked Questions

Job Training Report: Improving Land and Lives

EPA Brownfields Region 6 Information: www.epa.gov/region6/brownfields/

Check here to ensure non-duplication of similar Job Training programs:
www.niehs.nih.gov/wetp

List of previous Brownfields Job Training Grant Recipients: www.epa.gov/brownfields/pilot.htm//previous

List of previous Brownfields EPA Brownfields Grant Recipients:
www.epa.gov/brownfields/plocat.htm

Workforce Development and Job Training Competition Timeline



August 31st, 2010 – EPA Webinar/Conference Call. (More Details to follow).

October 1st, 2010 - Fiscal Year 11 Job Training instructions for proposals will be posted on grants.gov and OBLR website

January 14th, 2011 - Proposals due to EMS and EPA

April 2011- Announcement of Awards

Mid-Spring 2011 - Funds Awarded

EPA Region 6 Job Training Program Managers



- Sam Reynolds, EPA Region 6 Brownfields Team
214.665.6682
reynolds.samuel@epa.gov
- Amber Perry, EPA Region 6 Brownfields Team
214.665.3172
perry.amber@epa.gov

Contact Us If You are Interested in Applying!!!

Resources & Feedback

- To view a complete list of resources for this seminar, please visit the **Additional Resources**
- Please complete the **Feedback Form** to help ensure events like this are offered in the future

U.S. EPA Technical Support Project Engineering Forum
Green Remediation: Opening the Door to Field Use Session C (Green Remediation Tools and Examples)
Seminar Feedback Form

We would like to receive any feedback you might have that would make this service more valuable.
Please take the time to fill out this form before leaving the site.

First Name:

Last Name:

Daytime Phone Number:

Email Address:

Date of Seminar:

☐ Please send a copy of my feedback confirmation as a record of my participation to this address.

Need confirmation of
your participation
today?

Fill out the feedback
form and check box for
confirmation email.