



## **Welcome to the CLU-IN Internet Seminar**

### **Brownfields Nonprofit Outreach Training**

Sponsored by: Brownfields Region 6

Delivered: July 6, 2010, 1:00 PM - 3:00 PM, EDT (17:00-19:00 GMT)

Instructors: Dr. Harold Ledford, Center for Community Renewal ([haroldledford@communityrenewal.us](mailto:haroldledford@communityrenewal.us))

Camisha Scott Marshall, U.S. EPA Region 6 ([scott.camisha@epa.gov](mailto:scott.camisha@epa.gov))

Sam Reynolds, U.S. EPA Region 6 ([reynolds.samuel@epa.gov](mailto:reynolds.samuel@epa.gov))

David Reel, U.S. Corps of Engineers ([reel.david@epa.gov](mailto:reel.david@epa.gov))

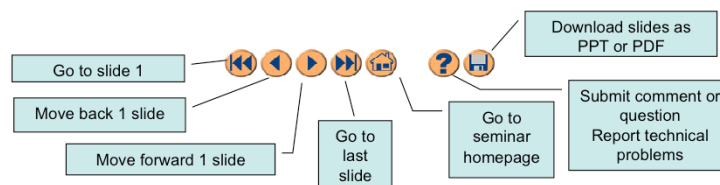
Moderator: Jean Balent, U.S. EPA, Technology Innovation and Field Services Division ([balent.jean@epa.gov](mailto:balent.jean@epa.gov))

*Visit the Clean Up Information Network online at [www.cluin.org](http://www.cluin.org)*

1

# Housekeeping

- Please mute your phone lines, Do NOT put this call on hold
  - press \*6 to mute #6 to unmute your lines at anytime
- Q&A
- Turn off any pop-up blockers
- Move through slides using # links on left or buttons



- This event is being recorded
- Archives accessed for free <http://clu.in.org/live/archive/>

2

Although I'm sure that some of you have these rules memorized from previous CLU-IN events, let's run through them quickly for our new participants.

Please mute your phone lines during the seminar to minimize disruption and background noise. If you do not have a mute button, press \*6 to mute #6 to unmute your lines at anytime. Also, please do NOT put this call on hold as this may bring delightful, but unwanted background music over the lines and interrupt the seminar.

You should note that throughout the seminar, we will ask for your feedback. You do not need to wait for Q&A breaks to ask questions or provide comments. To submit comments/questions and report technical problems, please use the ? Icon at the top of your screen. You can move forward/backward in the slides by using the single arrow buttons (left moves back 1 slide, right moves advances 1 slide). The double arrowed buttons will take you to 1<sup>st</sup> and last slides respectively. You may also advance to any slide using the numbered links that appear on the left side of your screen. The button with a house icon will take you back to main seminar page which displays our agenda, speaker information, links to the slides and additional resources. Lastly, the button with a computer disc can be used to download and save today's presentation materials.

With that, please move to slide 3.



# Brownfields

**Challenging our Communities  
in a Changing World**



## Purpose

---

- The purpose of this presentation is to provide an overview of the Brownfields Program specifically targeting the Non Profit Community.
- The topics of discussion includes:
  - Definition and Examples of Brownfields
  - Program Resources Available to Non-Profits
  - Program Criteria specifically for Non-Profits





---

## **What are Brownfields?**

Small Business Liability Relief and  
**Brownfields Revitalization Act**

○ **Amends CERCLA** by:

- Providing grants to assess and cleanup sites
- Providing liability exemptions



**Defines brownfields** as:

- “...real property, the expansion, redevelopment or reuse of which may be complicated by the presence or potential presence of a hazardous substance, pollutant, or contaminant.”

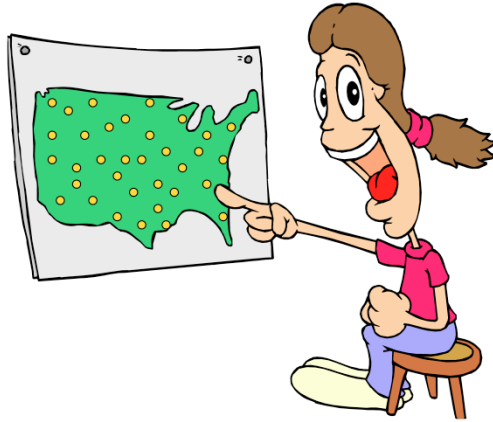
6

BF Act is actually an amendment to CERCLA - Comprehensive Environmental Response, Compensation and Liability Act. CERCLA has very strong liability language which is often a deterrent to redevelopment of sites, as we talked about earlier. The BF Act amends CERCLA to alleviate some of those liability concerns.

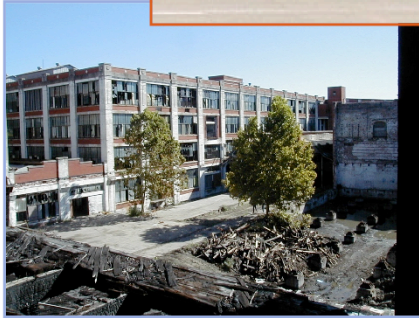
Current funding level is around \$75M

## The Brownfields Gamut

There are an estimated **450,000** brownfields sites nationwide!



## What Do Brownfields Look Like?





## More Brownfields



## The Brownfields Impact



### Economic

Decreased  
property  
values and  
city tax  
revenues

### Social

Increased  
urban sprawl  
and inner  
city blight

### Environment

Potential  
threats to  
human health  
and the  
environment

11

## Brownfields Project Cycle



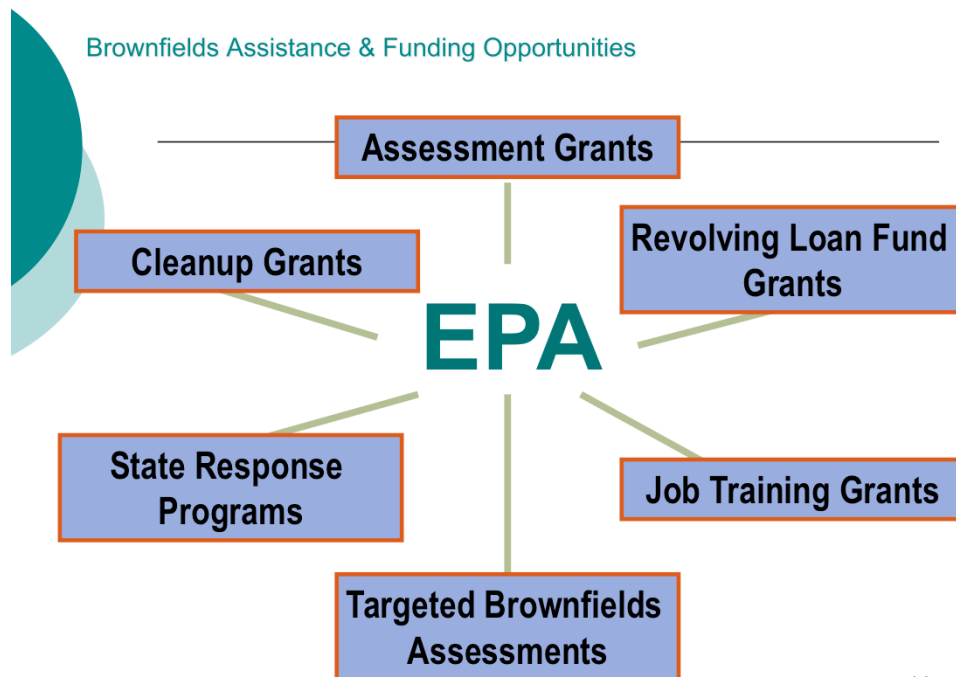




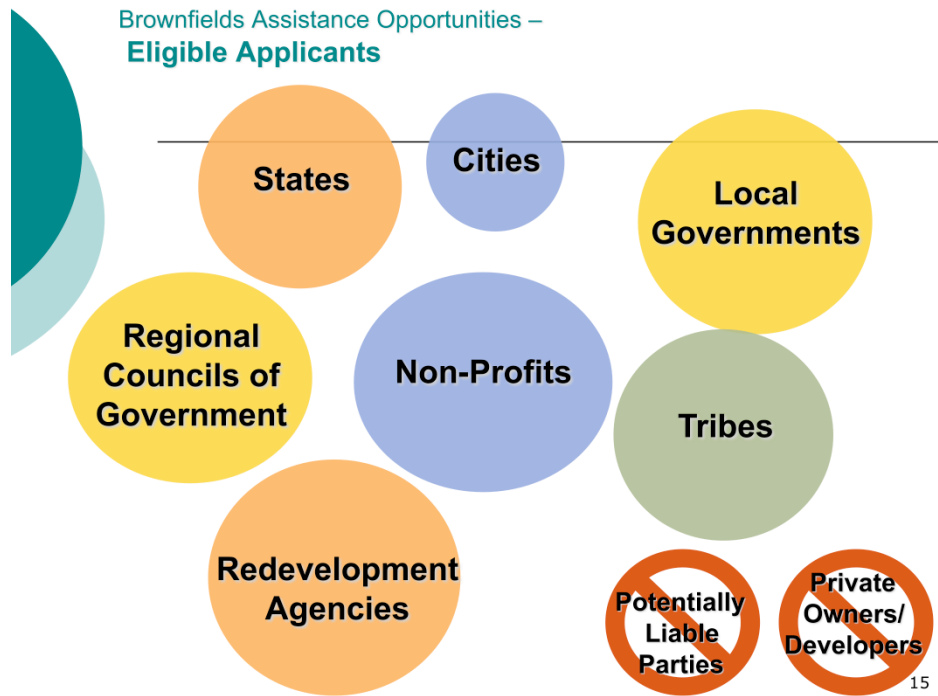
---

## **Brownfields Resources Available**

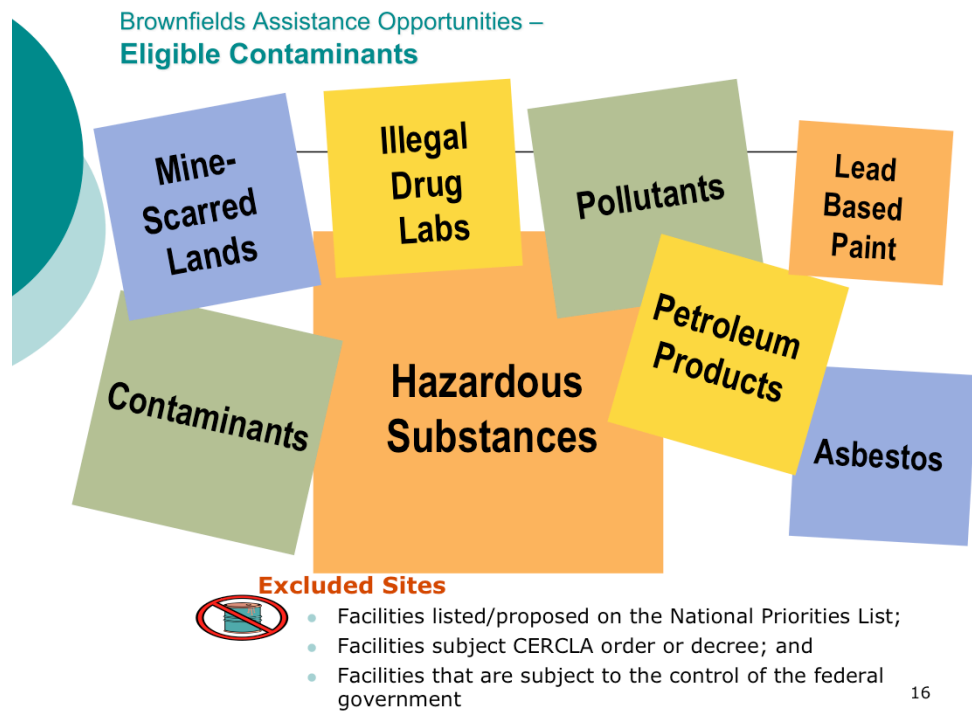
Brownfields Assistance & Funding Opportunities



14



Since you're here, you guys must be eligible applicants with eligible sites! But just FYI . . .



Who's not eligible? Basically responsible parties and private owners.

What sites aren't eligible? Key words – NPL, any kind of state, federal or court order sites, and any site owned by the federal gov't

## Brownfields Job Training Grants

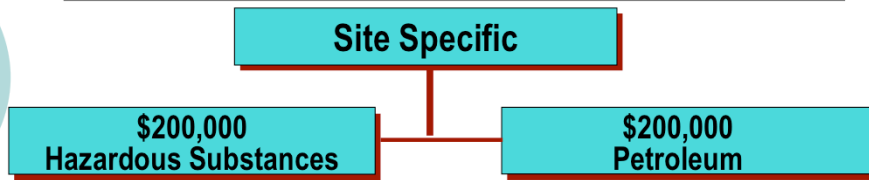
---

**\$200,000**

- Non-profits eligible
- For environmental training and employment



## Brownfields **Cleanup** Grants



- Applicant can not be potentially liable for contamination under CERCLA
- Non-profit organizations are eligible to apply
- Applicants may apply for funding at up to three sites
- Maximum funding per entity: \$600,000
- 3 year performance period
- 20% Cost Share

Example eligible activities:

- ✓ Cleanup
- ✓ Confirmatory sampling **ONLY**

18



## Brownfields Cleanup Grants

---

- Prior to Clean up Grant proposal submittal:
  - Non profit must have EPA approved Phase I and Phase II
  - ESA's must conform to EPA's All Appropriate Inquiries (AAI) or ASTM format
  - Cost for assessments can be up to \$100K
  
- ESA Funding Options:
  - ❖ Non profits can fund ESA themselves or
  - ❖ Non profits may secure free ESA services from:
    - Local Brownfields Assessment Grantee
    - State Brownfields Program
    - EPA R6 Brownfields Program

## FREE SERVICES

### Targeted Brownfields Assessments (TBA)

➤ EPA and/or States provides Environmental Site Assessment to local governments and non profits

- Inventories – compiles a list of possible properties
- Phase I- a report prepared which identifies potential or existing environmental contamination [liabilities](#)
- Phase II – the purpose is to evaluate the recognized environmental conditions identified in the Phase I ESA through a sampling of the site
- Cleanup planning activities
- Provided on a year round basis







## How to request a Targeted Brownfields Assessment

---

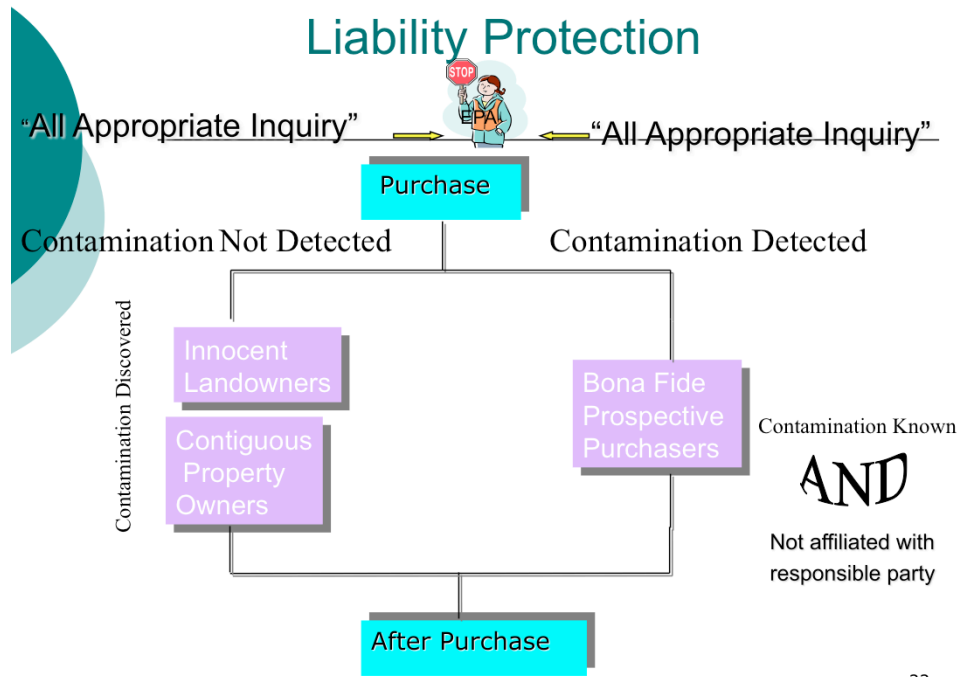
- Submit request to EPA R6 Brownfields Section Chief

[Smith.monica@epa.gov](mailto:Smith.monica@epa.gov)

- EPA evaluates/approves request
- Environmental Site Assessment is performed
- Final report is issued to non-profit

**Note:** EPA will offer the States or local Brownfields Assessment Programs the right of first refusal before performing the requested ESA.

21



## ALL APPROPRIATE INQUIRY = Phase I Environmental Site Assessment

All Appropriate Inquiry (AAI) or Phase I environmental site assessment (ESA) is the process of evaluating a property for potential environmental contamination and assessing potential liability for any contamination present at the property





## AAI=PHASE I ESA WHEN?

- BEFORE acquiring the property
- Conducted or updated within **1 YEAR** prior to acquisition
- Update within **180 DAYS** prior to acquisition



24



---

## **Brownfields Benefits**

25

## The Benefits of Brownfields

- Revitalize Communities
- Create Jobs and Local Revenue
- Remove Blight
- Protect the Environment

**\* Each \$1 invested in Brownfields funding leverages \$2.50 in redevelopment!**



26

Creation of employment - According to a survey by the U.S. Conference of Mayors, 187 of 231 cities responded that cleaning up existing brownfields sites could generate as many as 540,000 new jobs if the land were returned to production.

Increased local revenue - Encouraging development on existing, unoccupied sites has the potential not only to rejuvenate local tax revenue, but to spawn additional development of nearby underused properties.

Revitalize urban areas - Because of their locations, brownfields promote the infill and mixed-use development of smart growth

Removal of urban eyesores – Perception of contamination; Brownfields cleanup removes signs of decay

Protection of existing greenspaces – creating incentives to attract development on existing sites curbs the urge to develop pristine areas

Improved cmty health – Curbs illegal dumping; cleanup removes potential public health threat of contamination



---

## **Cost Share Requirements**



## Cost Share Requirement

---

- Cost Share of 20% Required For
  - Brownfields Cleanup
    - Hardship Waiver available for match
- Cost Share connected to the Environmental Cleanup
- The grant recipient contributes cash or in-kind resources for cleanup cost share





---

## **Brownfields Criteria Applicable to Non Profits**



## Guidance and Resources

---

- Regulations 40 CFR 30.23 – Cost Share
- National Proposal Guidelines, Appendix 2
- OMB Cost Principles, A-122 Non-profits



## What Determines Eligible Cost Share?

---

- Reasonable
- Allocable
- Necessary (Project Objectives)
- Not Prohibited
- Not Federal
  - Unless Federal Program Has Provision to Allow
- Not Other Federal Grant Cost Share
- Verifiable (e.g., documented)
- In Budget



## What are Eligible Cost Share Resources?

---

- Cash
- Non-Federal Grants
- Labor
- Material
- Supplies
- Services



## Highlights

---

- What is a BF
- What is the Impact
  - Social, Economic and Environmental
- Project Cycle
  - Identify, assess, cleanup, redevelopment
- Eligible Programs/ Services for Non profits
  - Job Training
  - Cleanup
  - TBA
- Types of Contaminants
  - LBP, Hazardous, Petroleum,
  - Asbestos, Mine scarred lands
  - Illegal drug labs
- Cleanup requires 20% match
- Cost Share is not from grant
- Remember to refer to the regulations or EPA for clarification
- Cost Eligibility
  - Reasonable
  - Allocable

33



## Brownfields Grant Competition

---

- **General Brownfields (ARC) Grant Schedule**
  - Expected Guidelines posted August XX, 2010:  
<http://www.epa.gov/swerosps/bf/applicat.htm>
  - Proposals Due October XX, 2010
  - Selections Spring 2011
  - Award Summer 2011
- **Questions?**
  - Monica Smith, Brownfields Section Chief  
214-665-6780 or via email [smith.monica@epa.gov](mailto:smith.monica@epa.gov)
  - 1-800-533-3508 and ask for the Brownfields Team

# National Center for Community Renewal



Green Building for  
Renewing Communities





# Who we are:





## Community Renewal International, Inc.



- CRI is a non-profit comprehensive community initiative working to reverse the disintegration of cities by helping to restore safe neighborhoods through caring relationships
- This model for increasing social capital systematically rebuilds the system of caring relationships as efficient and effective platforms in neighborhoods.



## Community Renewal International



- CRI's model has three primary strategies designed to bring about environments that nurture whole persons:
  - Renewal Team
  - Haven House
  - Friendship House





# Our situation:



# National Center for Community Renewal



## Goals

- Dissemination of the CRI program model
- Being a catalyst for renewal through sustainable design
- Economic development



# National Center for Community Renewal



- **Expected Outcomes**

- New industry of “social technology”
- Dissemination of a working model
- Training and support
- Academic certification
- Curricula/internships
- On-site and distance learning
- Research
- Better communities



# National Center for Community Renewal



## Why Build Green?

In the United States, buildings account for:

- 36% of total energy use
- 65% of electricity consumption
- 30% of greenhouse gas emissions
- 30% of raw materials used
- 30% of waste output (136 million tons annually)
- 12% of potable water consumption

### Environmental benefits:

- Enhance and protect ecosystems and biodiversity
- Improve air and water quality
- Reduce solid waste
- Conserve natural resources

### Economic benefits:

- Reduced operating costs
- Enhanced asset value and profits
- Improved employee productivity and satisfaction
- Optimized life-cycle economic performance

### Health and community benefits:

- Improved air, thermal, and acoustic environments
- Enhanced occupant comfort and health
- Minimized strain on local infrastructure
- Contribution to overall quality of life





# Our plan and how we carried it out:



## NATIONAL CENTER FOR COMMUNITY RENEWAL PHASED PLANNING EFFORT



**Phase One**—Abatement and demolition process for asbestos and other hazardous waste. **COMPLETED**

**Phase Two**—replication model development, overall curriculum framework, fund-raising plan development and implementation design, launching Marketing for National Center, plan development **ONGOING**

### Phase Three

- Design completion **ONGOING**
- Curriculum development **ONGOING**
- Initiate National Center training **ONGOING**
- Replication design **ONGOING**
- Selection of contractor **ONGOING**
- Marketing for National Center **ONGOING**

**Phase Four**—construction

**Phase Five**—move in and operation

\*Currently \$2.77 million secured for Phase I and Phase II

44



## National Center for Community Renewal



- To accomplish Phase I—remediation and demolition, CRI:
  - Attended Annual Region VI EPA Brownfields Partners Forum
  - Attended Louisiana EPA Brownfields workshop
  - Communicated extensively with the project manager from Region VI and the City of Shreveport Brownfields Coordinator
  - Issued an RFP for Phase II Assessment and a project manager using HUD/EDI funds
  - Selected ALTEC Environmental Consultants, Inc. for the assessment and as project manager
  - Utilized EPA Brownfields Training grant through the City of Shreveport and Southern University, Shreveport to train hurricane evacuees and local at-risk individuals as certified abatement workers and employed them in the building for real-life experience





# How we used outside funding to support Phase I:



# National Center for Community Renewal



How CRI utilized outside funding to support Phase I:





# Results to date:



## National Center for Community Renewal

- 1670 cubic yards or 56 truckloads of friable and non-friable asbestos waste
- 6260 cubic yards or 209 truckloads of construction debris
- 32,420 man-hours





# Next Steps:



# National Center for Community Renewal



- **Vision**

- Housing
- Training facilities
- Technical support



Concept Study for  
**National Center for Community Renewal**  
Elevation, section and form studies  
MHSM Architects   
3.24.06



# National Center for Community Renewal

## Parameters for design

- The building must reflect a sustainable and renewable concept in all of its functions.
  - **Energy production** will be renewable and sustainable
  - **Internal environment** will be safe and sustainable
  - **Individual work and living environments** will be healthy and safe
  - **Building operation and maintenance** will be environmentally sound and sustainable
  - **Teaching/Meeting spaces** will be on-site and virtual
  - **Structure and functioning** will lead to the training of others in the CRI model both on-site and virtually
  - **Promote community enhancement** of downtown Shreveport in terms of economic and workforce development.





## National Center for Community Renewal



- **Green building technologies to be featured:**

- Roof top gardens
- Rain water capture and recycling
- Recycled building materials
- Solar/photovoltaic energy systems
- Biodiesel energy system
- Wind generated system within building
- 'Smart' light and climate controls
- 'Smart' training areas and residential rooms



## National Center for Community Renewal



- **Building will be for mixed use:**
  - Training facilities
  - Meeting rooms
  - Library/resource center
  - Hotel/dormitory rooms for extended training/conferences
  - Corporate offices
  - Small retail on ground floor



# National Center for Community Renewal



## Funding Formula

Major Focus:

- The Model/Programs/Replication
- Sustainable LEED Certified Green Building
- Training and Certification Programs
- Product Donations/Partnerships with Corporations—20%
- Grants from Private Corporations/Individuals—20%
- Government Funding—10%
- Grants from Foundations—20%
- Tax credits—30%



# National Center for Community Renewal



## Replication Efforts

**The CRI model has been completely replicated in Abilene, Texas, by the non-profit Connecting Caring Communities. Groups in Minneapolis, MN; New Orleans; Doumbouo, Cameroon, Africa; and other cities are in various stages of replication.**



# National Center for Community Renewal



## Program Efforts

- Trainings—Individuals from over 50 cities and three foreign countries, including 38 cities in Region VI's five states have attended CRI's workshops in Shreveport to observe the model in action
- Curricula—under development through congressional appropriation through HHS
- Evaluations—ongoing yearly
- Websites—[www.communityrenewal.us](http://www.communityrenewal.us), [crigreen.org](http://crigreen.org), [africarenewal.us](http://africarenewal.us)
- Tours—over 3000 individuals have toured the CRI sites, getting an overview of the CRI model





# Virtual tour— National Center for Community Renewal

<http://www.youtube.com/watch?v=pbvrHZjCqI0>



58

# National Center for Community Renewal



For more information:

Dr. Harold Ledford  
P. O. Box 4678  
Shreveport LA 71134  
318-425-3222  
Fax 318-425-8999

[haroldledford@communityrenewal.us](mailto:haroldledford@communityrenewal.us)

[www.communityrenewal.us](http://www.communityrenewal.us)



## FY 11 Workforce Development and Job Training Grant Program : For Non-Profit Organizations



Presented by U.S. EPA Region 6  
July 6, 2010



## When and Why was the Job Training Program Established



- The Job Training Program was established in the early 1990s.
- EPA staff discovered that many communities affected by environmentally contaminated sites were not benefiting from the jobs created from site cleanup due to lack of environmental training in the local workforce.
- EPA designed its Job Training program to help ensure that graduates would benefit from local job opportunities.

## Process and Statistics



- EPA awards competitive grants to develop environmental cleanup and health and safety training programs for unemployed and underemployed, predominately low-income and minority residents of brownfields-impacted communities.
- **To date**, EPA has funded 169 Brownfields Job Training grants totaling over \$35 million.
- **As of June 2010**, more than 5,800 people have completed training, over 3,800 have obtained employment in the environmental field, with an average starting hourly wage of \$14.65.

**Non-Profit and Public/or Non-Profit  
Private Educational Institution  
Partnering Strongly Encouraged**



As a Non-Profit we strongly encourage you partner with a educational institution.

The educational institution will be responsible for helping establish and implementing the curriculum and also provide the necessary instructors required for your job training program.

## Community Benefits/No Cost Share



- Promotes your community goals of sustainable land reuse and environmental protection, through cleanup of site contamination and sustainable redevelopment of brownfields.
- Graduates apply knowledge and skills learned by obtaining environmental jobs to help clean up the communities contaminates properties.
- **There is no cost share requirement for this grant!**

## Overall Community Benefits to Program



- Promotes partnerships by seeking input from local stakeholders—including workforce development entities and representatives from private industry.
- Strengthens community bonds and produce graduates that are attractive to local employers.

## Brownfields Job Training Grants The Competition Process



EPA awards 12-13 Brownfields Job Training grants each year

Maximum value for each grant is \$200,000

### The Statistics!

1 out of 4 proposals are funded

90% of unfunded proposals are funded upon re-applying

*FY 11 Workforce Development and Job Training Program*

The American Recovery and Reinvestment Act of 2009 includes a provision granting \$100 million to the EPA Brownfields Program for clean up, revitalization, and sustainable reuse of contaminated properties. Job Training grants are a key component of funds being awarded.

On March 19, 2009, EPA issued a request for applications (RFA) from eligible governmental entities and nonprofit organizations to provide environmental job training projects that will facilitate job creation in the assessment, remediation, or preparation of brownfields sites for sustainable reuse. The closing date for receipt of applications is April 20, 2009.

## Types of jobs Obtained After Graduation



Environmental Technician  
Air Quality Technician  
Emergency Response Technician  
Energy Conservation Specialist  
GIS Technician  
Forklift Operator  
Health & Safety Technician/Trainer  
Biotechnology Technician/Analyst  
Sampling/Calibration/Analysis Technician  
Wastewater Treatment Plant Operator  
Hazardous Materials Transporter  
Treatment, Storage, & Disposal Facility Technician  
Construction/plumber/electrician

## Workforce and Development Job Training Program **Required Core Curriculum !**



### **Required Core Curriculum!**

Occupational Safety And Health Administration (OSHA) Hazardous Waste Operations and Emergency Response (HAZWOPER)

Lead Renovation, Repair and Paint (RRP)

Underground Storage Tank Leak Prevention

Solid Waste Management or Cleanup Related Training  
(Recycling, Landfill Remediation and Capping, Demolition and Debris Collection, etc.)

Innovative and Alternative Treatment Technologies (Solar Installation, Green Remediation Technologies, Phytoremediation, Soil Amendments etc.)



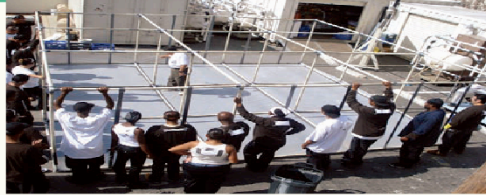
## Workforce and Development Job Training Non-Required Training



### Non-Required Training Examples:

- Mold Remediation
- Energy Auditing
- Weatherization
- Heavy Machinery Operations
- Industrial and Oil Spill Response
- Native Plant Revegetation
- Low-Impact Development
- Green Building Design

## Los Angeles Conservation Corps Success Story



*Students learn asbestos remediation within a "decontamination station"*

- Teamed with a local trade college and a Non-Profit Organization and trained students in renewable energy, such as , solar power, weatherization.
- Completed 5 training sessions, graduated over 175 students, 85% placement rate.

## JFYNetworks Boston, MA. EPA Job Training Program Success Story



*Students performing job training at JFY NetWorks in Boston.*

- Provides 3 types of environmental training, cleanup, renewable energy, and weatherization.
- To Date, has produced 330 graduates, 80% to 90% placement rate.
- Average entry- level job pays \$27.000 per year.

## King County Work Training Program Success Story



*Students of the King County Work Training Program participate in HAZMAT training*

- Job Training Program provides a 238-hour curriculum, which includes HAZWOPER and Bioremediation.
- Graduated over 260 students, of whom 183 have been placed in jobs with wages ranging from \$12-\$35 per hour.

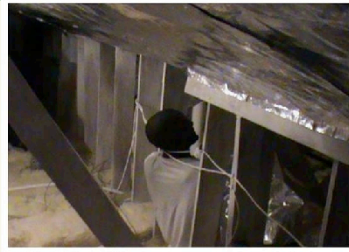
## Southern University at Shreveport Louisiana Success Story



*Hazwoper Training in Progress*

- SUSLA has received 2 EPA Job Training Awards to Date.
- SUSLA has conducted several 8 week courses over a 4 year period.
- SUSLA has graduated 68 students and has placed 50 students into environmental jobs.

## Goodwill Industries New Orleans, LA. Success Story



### ***Student receiving hands-on training installing a radiant barrier in a New Orleans home***

- Goodwill received a Job Training Grant in 2008.
- Goodwill trained over 50 students in environmental skills including HAZWOPER and Weatherization.
- Goodwill graduated 46 students and placed 39 students in environmental Jobs.

## Limitless Vistas New Orleans 2009 Job Training Award Associated Press Announcement



EPA grant teaches youth about environmental skills

Associated Press - April 10, 2010 1:44 PM ET

NEW ORLEANS (AP) - The federal Environmental Protection Agency has issued a \$200,000 grant for a New Orleans company to teach inner-city youth job skills aimed at employing them in the environmental industry.

Limitless Vistas Inc. plans to train 40 students with the goal of placing at least 80 percent of them in environmental jobs. The company will track their progress over the next year.

The students will be trained in hazardous waste management, weatherization, construction safety, removing asbestos and abatement of lead and mold.

Additional training will come from environmental contractors. Limitless Vistas will assist in job placement.

**Limitless Vistas Job Training  
Ceremony, Lisa Jackson, EPA  
Administrator Speaking**





## Web-based Resources



### **EPA Brownfields Job Training Information: [www.epa.gov/brownfields/job.htm](http://www.epa.gov/brownfields/job.htm)**

Guidelines  
Frequently Asked Questions  
Job Training Report: Improving Land and Lives

### **EPA Brownfields Region 6 Information: [www.epa.gov/region6/brownfields/](http://www.epa.gov/region6/brownfields/)**

**Check here to ensure non-duplication of similar Job Training programs:**  
[www.niehs.nih.gov/wetp](http://www.niehs.nih.gov/wetp)

**List of previous Brownfields Job Training Grant Recipients:** [www.epa.gov/brownfields/pilot.htm//previous](http://www.epa.gov/brownfields/pilot.htm//previous)

**List of previous Brownfields EPA Brownfields Grant Recipients:**  
[www.epa.gov/brownfields/plocat.htm](http://www.epa.gov/brownfields/plocat.htm)

## Workforce Development and Job Training Competition Timeline



**August 31st, 2010 – EPA Webinar/Conference Call. (More Details to follow).**

**October 1st, 2010 - Fiscal Year 11 Job Training instructions for proposals will be posted on grants.gov and OBLR website**

**January 14th, 2011 - Proposals due to EMS and EPA**

**April 2011- Announcement of Awards**

**Mid-Spring 2011 - Funds Awarded**

## EPA Region 6 Job Training Program Managers



- Sam Reynolds, EPA Region 6 Brownfields Team  
214.665.6682  
reynolds.samuel@epa.gov
- Amber Perry, EPA Region 6 Brownfields Team  
214.665.3172  
perry.amber@epa.gov

Contact Us If You are Interested in Applying!!!

# Resources & Feedback

- To view a complete list of resources for this seminar, please visit the [Additional Resources](#)
- Please complete the [Feedback Form](#) to help ensure events like this are offered in the future

U.S. EPA Technical Support Project Engineering Forum  
Green Remediation: Opening the Door to Field Use Session C (Green Remediation Tools and Examples)  
Seminar Feedback Form

We would like to receive our feedback via email that would make this service more valuable.  
Please take a minute to fill out this form before leaving the site.

First Name:

Last Name:

Title:

Email Address:

Date of Seminar: ☐ December 15, 2009 ☐ December 16, 2009

☐ I would like to receive our feedback via email that would make this service more valuable.

Need confirmation of  
your participation  
today?

Fill out the feedback  
form and check box for  
confirmation email.