

# Welcome to Superfund Redevelopment



Office of Superfund Remediation and Technology Innovation  
Superfund Redevelopment

Wednesday, April 29, 2009



***In July, SRI celebrates its  
10<sup>th</sup> Anniversary!***

## Session Overview

- What is SRI?
  - Purpose and History of SRI
  - Key SRI Tools
  - SRI Today
- A Closer look at Reuse
  - Types of Reuse
  - Sites in Reuse
  - What's Ahead



## Superfund Redevelopment Initiative

### **Superfund Redevelopment**



*Working with communities and other partners in considering future use opportunities and integrating appropriate reuse options into the cleanup process*





## Building on the Past: SRI's Pilot Sites

### Avtex Fibers: 1999 Pilot Grant

#### Region 3



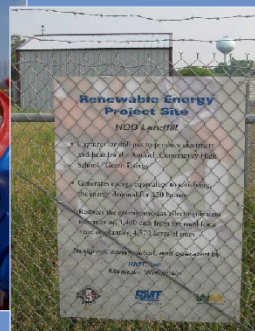
5

In collaboration with the US soccer Foundation, the local economic development committee and EPA were able to support construction of soccer fields that now cover a portion of this site. Additional commercial and ecological reuses are planned for the future.

## H.O.D. Landfill: 2002 Pilot Grant Region 5

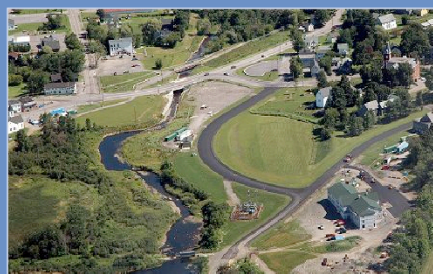


Innovative thinking by local stakeholders and support from EPA allowed this 121-acre landfill to transform to provide a playground and sports fields to the neighboring high school. Energy converted from methane gas from the landfill meets all of the high school's energy needs and wetlands on-site also serve environmental education purposes.



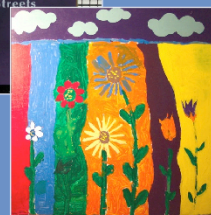


## Eastland Woolen Mill: 2001 Pilot Grant Region 1



Most of the cleanup has been completed and construction of a senior housing facility on the back portion of the site was completed in 2005. A historic structure that was relocated as part of the site cleanup now serves as a restaurant and general store. Over 80% of the area that was formerly contaminated or impacted by the cleanup action is now available for use.

## Many Diversified Interests (MDI): 1999 Pilot Grant Region 6



EPA worked with developers to negotiate the site's redevelopment, which offer a much needed residential development in downtown Huston.

## Woolfolk Chemical: 2002 Pilot Grant Region 4



A reuse planning process allowed for community members to play an active role in determining the anticipated future uses of this 31-acre former pesticide plant.

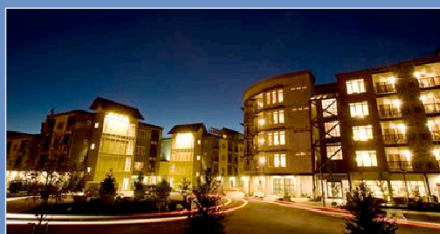
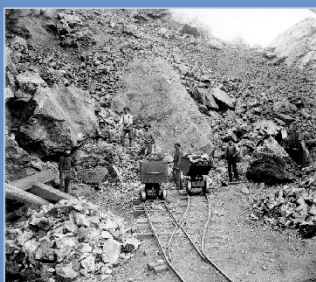
## Wyckoff Harbor: 2002 Pilot Grant Region 10



A portion of this former wood treatment facility now serves as the Japanese American memorial on Bainbridge Island. Other parts of the site provide parking at the Washington State Ferries Maintenance Terminal, and on a two-acre portion of the containment facility EPA created an estuarine habitat that attracts mussels and barnacles.



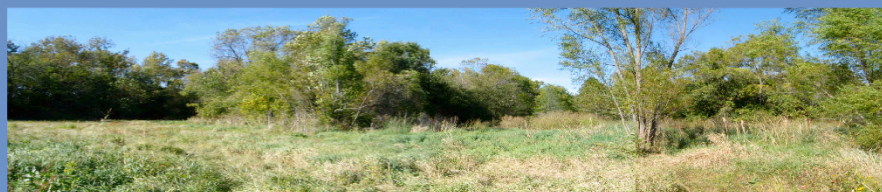
## Bunker Hill Mining and Metallurgical Complex: 2001 Pilot Grant Region 10



The Bunker Hill Superfund site is now home to the Silver Mountain Resort, a mixed residential neighborhood and commercial development and 18-hole golf course; the 78-acre Silver Valley Business Center, which supports industrial and commercial development; and light manufacturing, outdoor recreation, telecommunications, workforce training, environmental remediation businesses.

### SRI's Tools

- Regional SRI Coordinators
- SRI website: general reuse information
- Regional SRI websites
- Reuse help desk
- Return to Use
- Targeted assessments
- Regional seeds





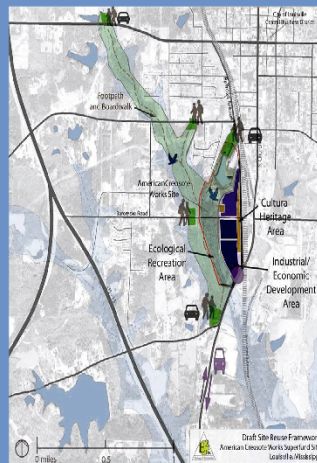
## Reuse Planning

A reuse plan can provide information about the future use of the site that may be more specific than what EPA could determine, or provide information about end uses have a broader acceptance in the community



## Why do Reuse Planning?

- Potential for targeted remedial process and lower remedial costs
- Establishment of realistic community expectations
- Strengthened working relationships between communities and EPA
- Environmental and smart growth benefits
- Enhancement of Long-Term Stewardship



## Return to Use Initiative



**Goal:** Remove barriers to reuse that are not necessary for the protection of human health, the environment, or the remedy at sites where remedies are already in place

## SRI Today: New & Improved Tools

- Case Studies:
  - Alternative Energy
  - Agriculture
  - MDI
- Videos:
  - Soaring in the Superfund Sky
  - Life After Superfund
- Top Ten Questions to Ask When Buying a Superfund Site
- SW RAU Performance Measures



## Top Ten Questions to Ask When Buying a Superfund Site

- Created by EPA for prospective purchasers of privately owned Superfund sites
- Answers key questions prospective purchasers may have about Superfund sites



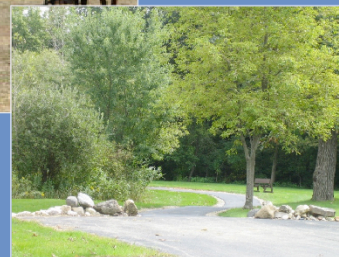


## Sitewide Ready for Anticipated Use (SWRAU) Measure

- EPA developed the SWRAU measure in a coordinated effort to report on Superfund's accomplishments in making land ready for reuse
- This effort demonstrates just how important land revitalization is to EPA!

## Types of Reuse

- Commercial
- Public Service
- Green Space
  - Recreational
  - Ecological
- Agricultural
- Residential
- Industrial
- Mixed Use



## Sites in Actual and Continued Use Today

Reuse Type	Actual	Continued	Total
Commercial	85	34	119
Public services	53	18	71
Recreational	75	11	86
Ecological	37	5	42
Agricultural	14	8	22
Residential	42	34	76
Industrial	74	113	187
<b>Total</b>	380	223	603



## Commercial Reuse Tinkham Garage Region 1: Londonderry, New Hampshire

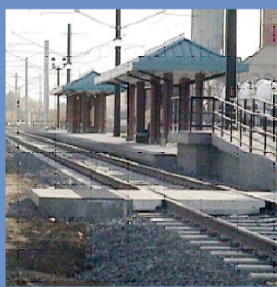




# Public Service Reuse

## Murray Smelter

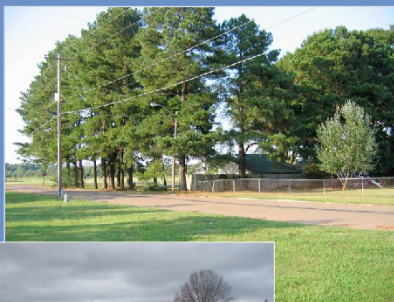
Region 8: Murray City, Utah



## Recreational Reuse

### Arlington Blending & Packaging

#### Region 4: Arlington, TN



## Auburn Road

Region 1: Londonderry, NH





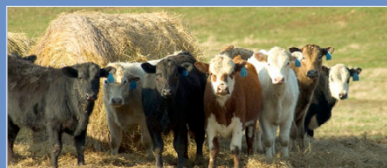
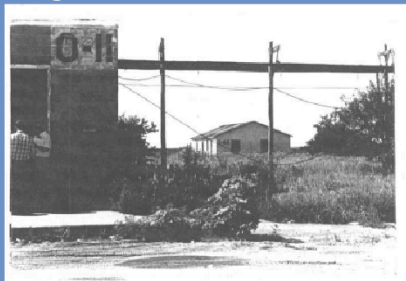
## Ecological Reuse Calumet Container Region 5: Hammond, Indiana





# Agricultural Reuse Nebraska Ordinance Plant

Region 7: Mead, Nebraska





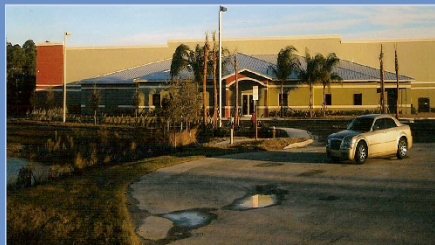
## Residential Reuse

### Midvale Slag

Region 8: Midvale, Utah



## Industrial Reuse Solitron Microwave Region 4: Port Salerno, Florida





## What's Ahead for SRI?

- Alternative energy at Superfund sites
- Performance measures
- National conferences, such as Brownfields and NARPM
- New informational tools, such as case studies, fact sheets, etc.

## 10<sup>th</sup> Anniversary Activities:

- More CLU-IN webinars
- Updated website: new reuse success stories and snapshots
- New videos posted
- New RTU demonstration projects
- New articles and brochure



Questions?

After viewing the links to additional resources,  
please complete our online feedback form.

**Thank You**

[Links to Additional Resources](#)

[Feedback Form](#)