



# Site Redevelopment? There's an App for That – Superfund Redevelopment Mapper Training

Casey Luckett Snyder, EPA Superfund Redevelopment Program/EPA Region 6  
Alison Frost, Skeo Solutions  
Bianca Boggs, Skeo Solutions

*Wednesday, January 26, 2022; 1:00 PM – 3:00 PM EST*

# Overview



- **Introduction to Superfund Redevelopment**  
Casey Luckett Snyder, EPA Superfund Redevelopment Program/EPA Region 6
- **Superfund Redevelopment Mapper Training**  
Alison Frost, Skeo  
Bianca Boggs, Skeo
- **Wrap Up: Resources and Contacts**
- **Question and Answer Session**

# Superfund Redevelopment Program



Brick Township Landfill  
Superfund site in Brick, New Jersey



Bunker Hill Mining & Metallurgical Complex  
Superfund site in Smelterville, Idaho



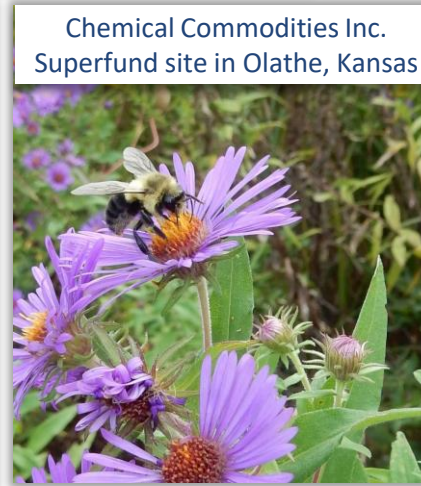
Libby Asbestos  
Superfund site in Libby, Montana



Chisman Creek  
Superfund site in York County, Virginia



PJP Landfill  
Superfund site in Jersey City, New Jersey



Chemical Commodities Inc.  
Superfund site in Olathe, Kansas



Blackburn & Union Privileges Superfund site  
in Walpole, Massachusetts

# Solar System of Contaminated Properties

*53% of the  
U.S. population lives  
within 3 miles of one of  
these sites.*

**6,400 RCRA Sites**



**100,000 – 200,000  
Underground Storage  
Tanks (abandoned)**



**40,000 Superfund sites  
(removal & remedial)**

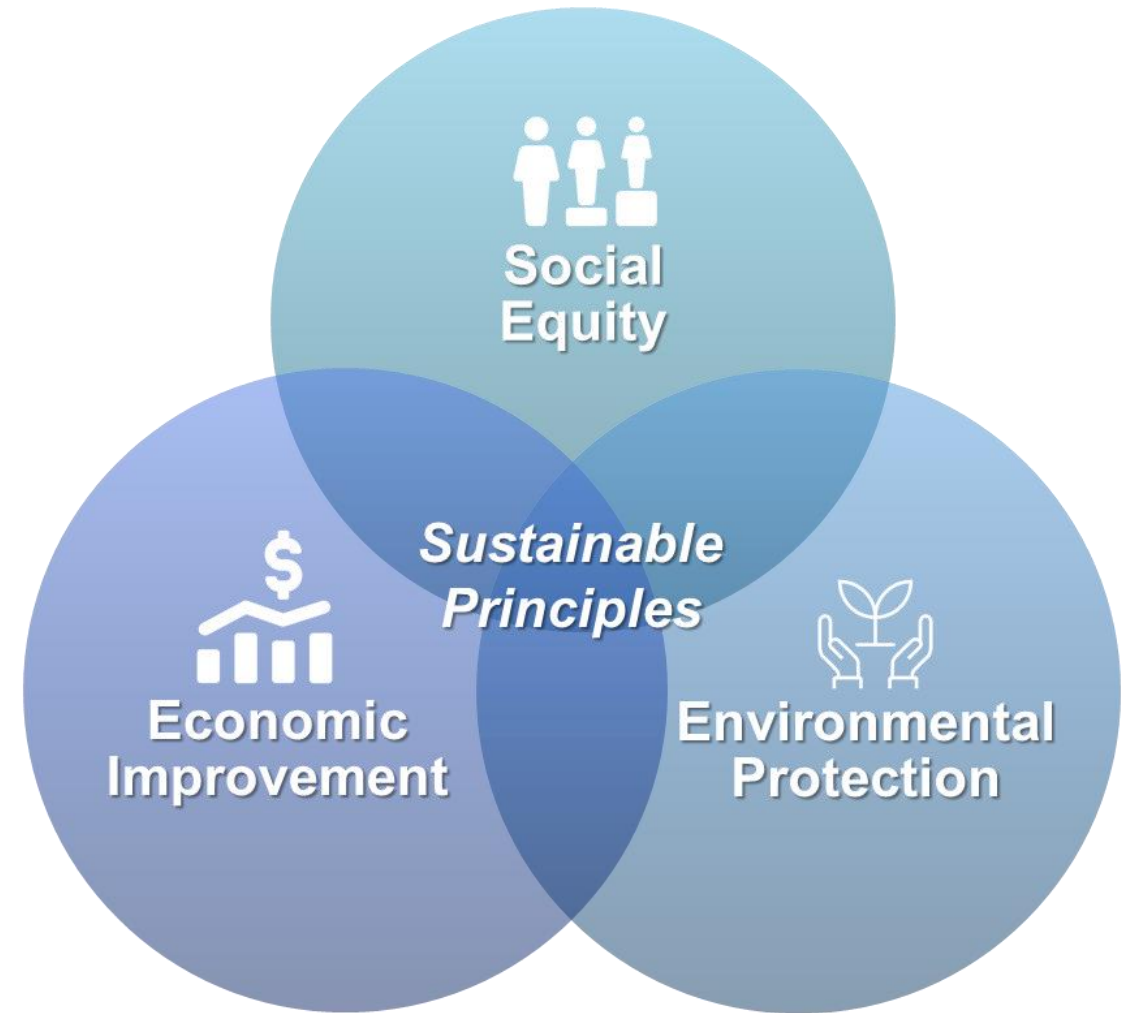


**450,000 – 600,000  
Brownfields**



# Benefits of Reuse at Superfund Sites

Sales generated by businesses at Superfund sites in reuse totaled \$63.3 billion in just one year (2020), which is more than four times the \$15.7 billion that EPA spent cleaning up these sites cumulatively.



# EPA's ultimate goal with the Superfund program is to return sites back to productive use in a protective manner.



Longhorn Army  
Ammunition Plant  
Superfund site in  
Karnack, Texas

Kansas City Structural  
Steel Superfund site in  
Kansas City, Kansas



Elizabeth Mine  
Superfund site in  
Strafford, Vermont

Roebing Steel Co.  
Superfund site in  
Florence, New Jersey



Oeser Co.  
Superfund site in  
Bellingham, Washington

*Reuse is fun and the possibilities can be endless!*

# Examples of Successful Superfund Redevelopment



**Havertown PCP Superfund site  
in Haverford, Pennsylvania**



**Eagle-Picher Henryetta Superfund site  
in Henryetta, Oklahoma**

# Sites Can and Are Redeveloped at Any Stage of Cleanup

*EPA benefits from reuse information at any stage of the cleanup process because EPA continues to ensure sites meet protectiveness standards.*



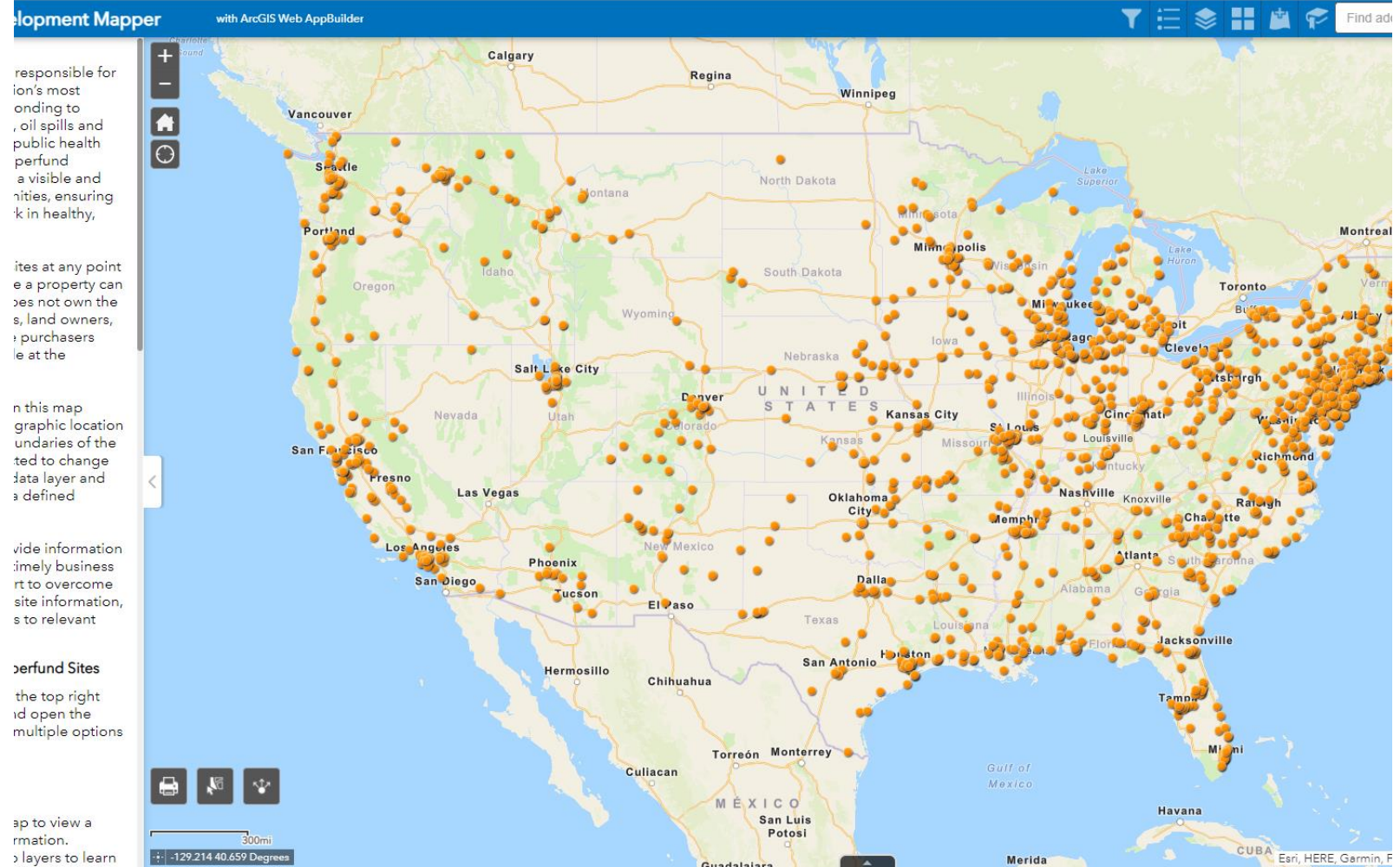
Before and After  
PJP Landfill Superfund site in Jersey City, New Jersey

# Superfund Redevelopment Mapper

Web-based mapping tool created to interactively explore reuse opportunities on or near Superfund Sites

Useful For:

- Developers
- Land Managers
- Local, state and tribal governments
- Community development organizations
- Community Members



# Introduction to the Superfund Redevelopment Mapper

**Alison Frost, Skeo Solutions**

**Bianca Boggs, Skeo Solutions**

# Agenda



- Introduction to the Tool
- Review All Data Layers Available
- Scenario Demonstrations
- Additional Resources
- Contact Information

# Introduction

- Web-based mapping tool created to interactively explore reuse opportunities on or near Superfund Sites
- Provides users with Superfund site locations and key information highlighting site features and surrounding area characteristics.

The screenshot shows the EPA's Superfund Redevelopment Mapper website. At the top, there's a header with the EPA logo and the text "United States Environmental Protection Agency". To the right of the logo is a search bar labeled "Search EPA.gov". Below the header is a navigation bar with links: "Environmental Topics", "Laws & Regulations", "Report a Violation", and "About EPA". The main content area is titled "Superfund Redevelopment Program" and includes a "CONTACT US" link. On the left side of the main content area is a sidebar with links: "Superfund Redevelopment Program Home", "What is Superfund Redevelopment?", "Promoting Redevelopment", "Benefits of Redevelopment", "Reuse Success Stories", "Training & Tools", "Site-Specific Reuse Support", and "Redevelopment Contacts". The main content area features a large heading "Superfund Redevelopment Mapper" followed by a paragraph explaining the tool's purpose: "To help communities affected by Superfund sites reclaim and return land to safe and beneficial use, EPA has developed the Superfund Redevelopment Mapper. This web-based mapping tool helps stakeholders explore potential reuse opportunities. It provides users with Superfund site locations and options for adding data layers that highlight site features and site surroundings. Any existing GIS data layer can be added to the tool, allowing users to explore more information about their communities, such as income levels, unemployment numbers and land features. Examples of the tool's uses include:". Below this paragraph is a bulleted list of two examples: "A shopping mall developer interested in properties near freeways, shipping services or affordable housing for workers." and "A solar farm developer focused on rural locations with solar potential and access to high-voltage power lines."

An official website of the United States government [Here's how you know](#)

**EPA** United States Environmental Protection Agency

Search EPA.gov

**Environmental Topics** **Laws & Regulations** **Report a Violation** **About EPA**

**Superfund Redevelopment Program** [CONTACT US](#)

Superfund Redevelopment Program Home

What is Superfund Redevelopment?

Promoting Redevelopment

Benefits of Redevelopment

Reuse Success Stories

Training & Tools

Site-Specific Reuse Support

Redevelopment Contacts

## Superfund Redevelopment Mapper

To help communities affected by Superfund sites reclaim and return land to safe and beneficial use, EPA has developed the Superfund Redevelopment Mapper. This web-based mapping tool helps stakeholders explore potential reuse opportunities. It provides users with Superfund site locations and options for adding data layers that highlight site features and site surroundings. Any existing GIS data layer can be added to the tool, allowing users to explore more information about their communities, such as income levels, unemployment numbers and land features. Examples of the tool's uses include:

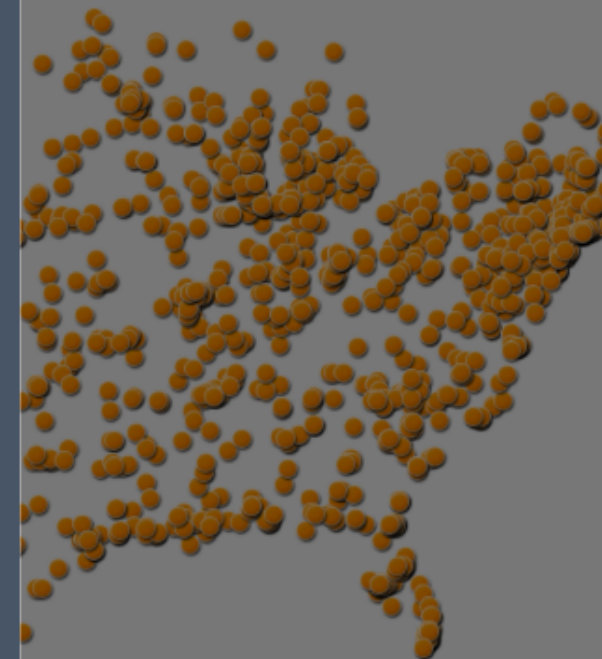
- A shopping mall developer interested in properties near freeways, shipping services or affordable housing for workers.
- A solar farm developer focused on rural locations with solar potential and access to high-voltage power lines.



The Agency is providing this geospatial information as a public service and does not vouch for the accuracy, completeness or currency of data. Data provided by external parties is not independently verified by EPA. These data are made available to the public strictly for informational purposes. Data do not represent EPA's official position, viewpoint, or opinion, express or implied. This information is not intended for use in establishing liability or calculating Cost Recovery Statutes of Limitations and cannot be relied upon to create any rights, substantive or procedural, enforceable by any party in litigation with the United States or third parties. EPA reserves the right to change these data at any time without public notice.

☐ Do not show this splash screen again.

OK



App State

Click to restore the map extent and layers visibility where you left off.

Esri, Garmin, FAO, NOAA, EPA



600mi

Move mouse to get coordinates

EPA's Superfund program is responsible for cleaning up some of the nation's most contaminated land and responding to environmental emergencies, oil spills and natural disasters. To protect public health and the environment, the Superfund program focuses on making a visible and lasting difference in communities, ensuring that people can live and work in healthy, vibrant places.

EPA encourages the use of sites at any time in the cleanup process where a property can be used safely. While EPA does not own properties that make up sites, land owners, developers, and prospective purchasers want to understand EPA's role at the property.

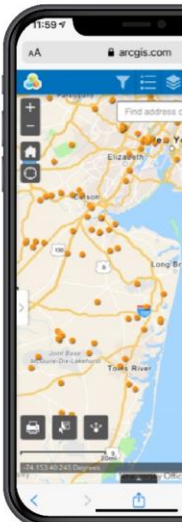
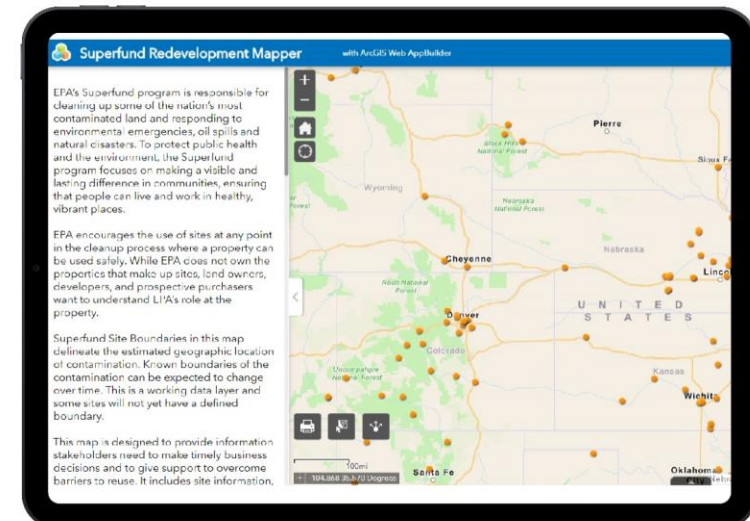
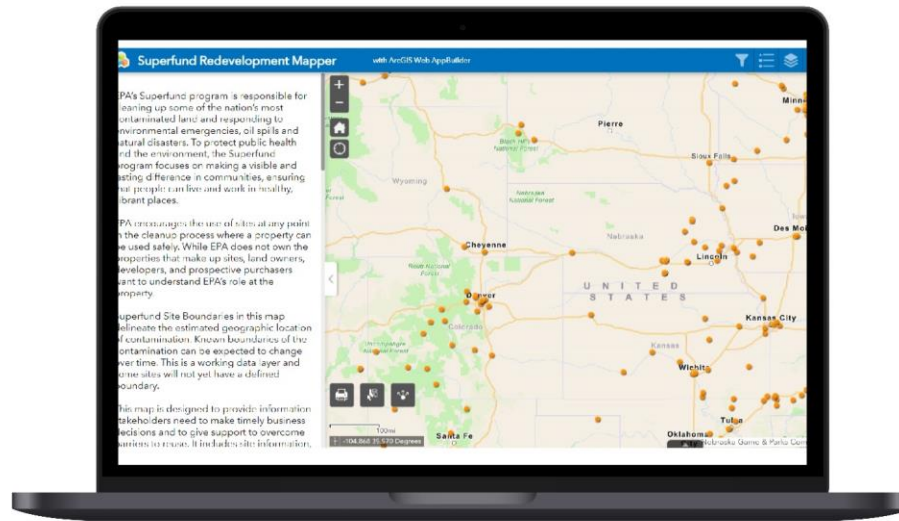
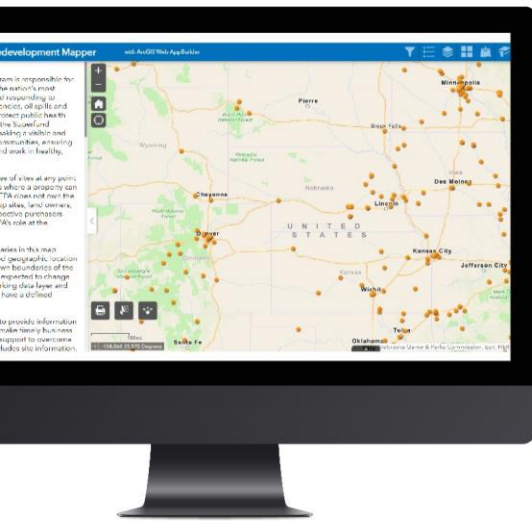
Superfund Site Boundaries in this map delineate the estimated geographic location of contamination. Known boundaries of contamination can be expected to change over time. This is a working data layer and some sites will not yet have a defined boundary.

This map is designed to provide information for stakeholders need to make timely business decisions and to give support to overcome barriers to reuse. It includes site information, community context, and links to relevant resources.

How to Search and Filter Superfund Sites

# Scenario Demonstrations

1. Green Grocer in a Food Desert in Jacksonville, Florida
2. Community Park and Solar in Providence County, Rhode Island
3. Commercial, Industrial, Transportation in Murray City, Utah



# Green Grocer in a Food Desert Example – Fairfax Street Wood Treaters Superfund site, Jacksonville, Florida

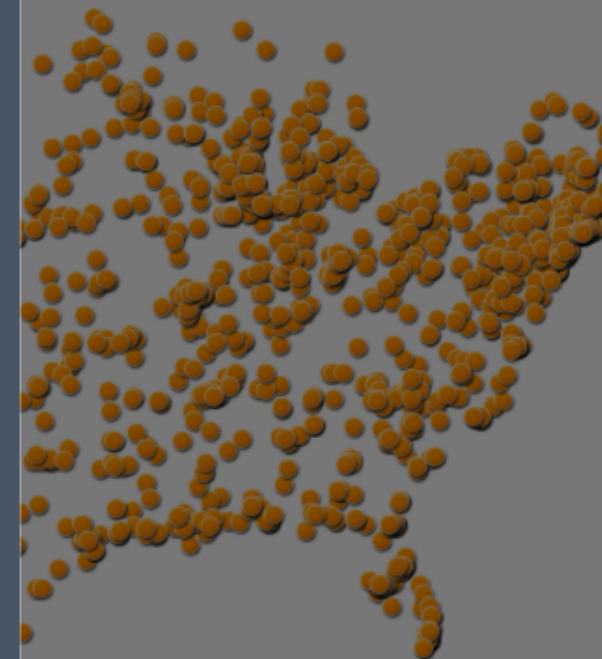




The Agency is providing this geospatial information as a public service and does not vouch for the accuracy, completeness or currency of data. Data provided by external parties is not independently verified by EPA. These data are made available to the public strictly for informational purposes. Data do not represent EPA's official position, viewpoint, or opinion, express or implied. This information is not intended for use in establishing liability or calculating Cost Recovery Statutes of Limitations and cannot be relied upon to create any rights, substantive or procedural, enforceable by any party in litigation with the United States or third parties. EPA reserves the right to change these data at any time without public notice.

☐ Do not show this splash screen again.

OK



App State

Click to restore the map extent and layers visibility where you left off.

Esri, Garmin, FAO, NOAA, EPA



600mi

Move mouse to get coordinates

EPA's Superfund program is responsible for cleaning up some of the nation's most contaminated land and responding to environmental emergencies, oil spills and natural disasters. To protect public health and the environment, the Superfund program focuses on making a visible and lasting difference in communities, ensuring that people can live and work in healthy, vibrant places.

EPA encourages the use of sites at any time in the cleanup process where a property can be used safely. While EPA does not own properties that make up sites, land owners, developers, and prospective purchasers want to understand EPA's role at the property.

Superfund Site Boundaries in this map delineate the estimated geographic location of contamination. Known boundaries of contamination can be expected to change over time. This is a working data layer and some sites will not yet have a defined boundary.

This map is designed to provide information for stakeholders need to make timely business decisions and to give support to overcome barriers to reuse. It includes site information, community context, and links to relevant resources.

How to Search and Filter Superfund Sites

# Community Park and Solar Example – Peterson/Puritan, Inc. Superfund site, Providence County, Rhode Island

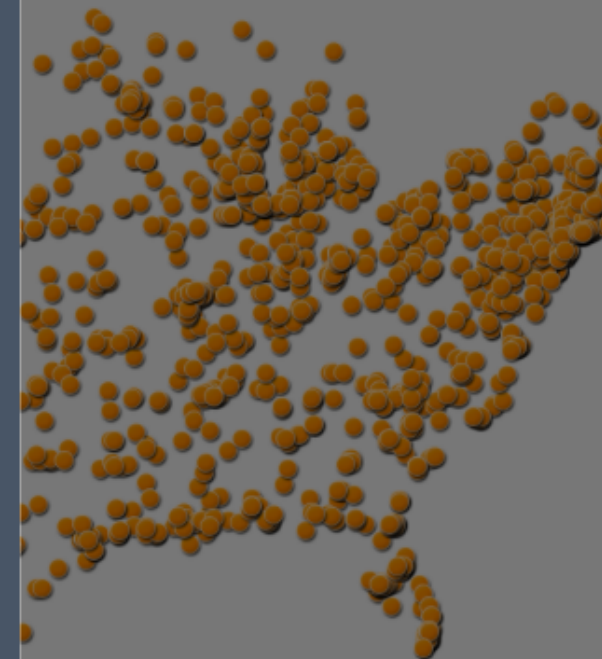




The Agency is providing this geospatial information as a public service and does not vouch for the accuracy, completeness or currency of data. Data provided by external parties is not independently verified by EPA. These data are made available to the public strictly for informational purposes. Data do not represent EPA's official position, viewpoint, or opinion, express or implied. This information is not intended for use in establishing liability or calculating Cost Recovery Statutes of Limitations and cannot be relied upon to create any rights, substantive or procedural, enforceable by any party in litigation with the United States or third parties. EPA reserves the right to change these data at any time without public notice.

☐ Do not show this splash screen again.

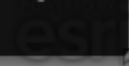
OK



App State

Click to restore the map extent and layers visibility where you left off.

Esri, Garmin, FAO, NOAA, EPA



600mi

Move mouse to get coordinates

EPA's Superfund program is responsible for cleaning up some of the nation's most contaminated land and responding to environmental emergencies, oil spills and natural disasters. To protect public health and the environment, the Superfund program focuses on making a visible and lasting difference in communities, ensuring that people can live and work in healthy, vibrant places.

EPA encourages the use of sites at any time in the cleanup process where a property can be used safely. While EPA does not own properties that make up sites, land owners, developers, and prospective purchasers want to understand EPA's role at the property.

Superfund Site Boundaries in this map delineate the estimated geographic location of contamination. Known boundaries of contamination can be expected to change over time. This is a working data layer and some sites will not yet have a defined boundary.

This map is designed to provide information for stakeholders need to make timely business decisions and to give support to overcome barriers to reuse. It includes site information, community context, and links to relevant resources.

## How to Search and Filter Superfund Sites

# Commercial, Industrial, Transportation Example – Murry Smelter Superfund site, Murray City, Utah

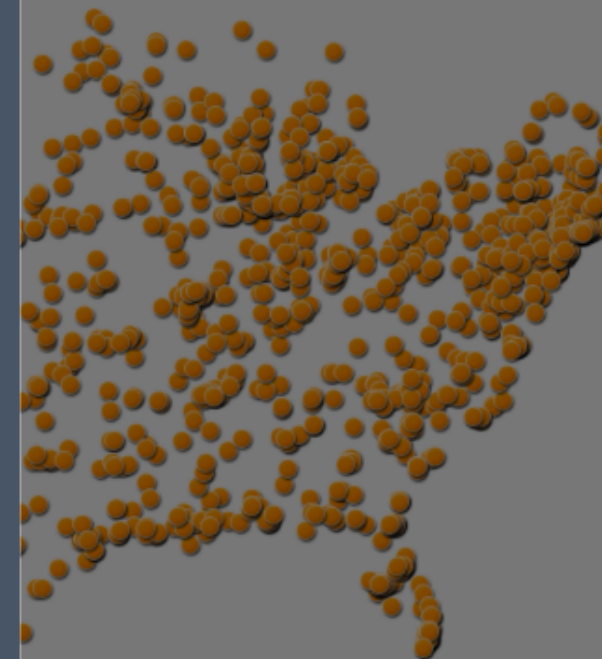




The Agency is providing this geospatial information as a public service and does not vouch for the accuracy, completeness or currency of data. Data provided by external parties is not independently verified by EPA. These data are made available to the public strictly for informational purposes. Data do not represent EPA's official position, viewpoint, or opinion, express or implied. This information is not intended for use in establishing liability or calculating Cost Recovery Statutes of Limitations and cannot be relied upon to create any rights, substantive or procedural, enforceable by any party in litigation with the United States or third parties. EPA reserves the right to change these data at any time without public notice.

☐ Do not show this splash screen again.

OK



App State

Click to restore the map extent and layers visibility where you left off.

Esri, Garmin, FAO, NOAA, EPA



600mi

Move mouse to get coordinates

EPA's Superfund program is responsible for cleaning up some of the nation's most contaminated land and responding to environmental emergencies, oil spills and natural disasters. To protect public health and the environment, the Superfund program focuses on making a visible and lasting difference in communities, ensuring that people can live and work in healthy, vibrant places.

EPA encourages the use of sites at any time in the cleanup process where a property can be used safely. While EPA does not own properties that make up sites, land owners, developers, and prospective purchasers want to understand EPA's role at the property.

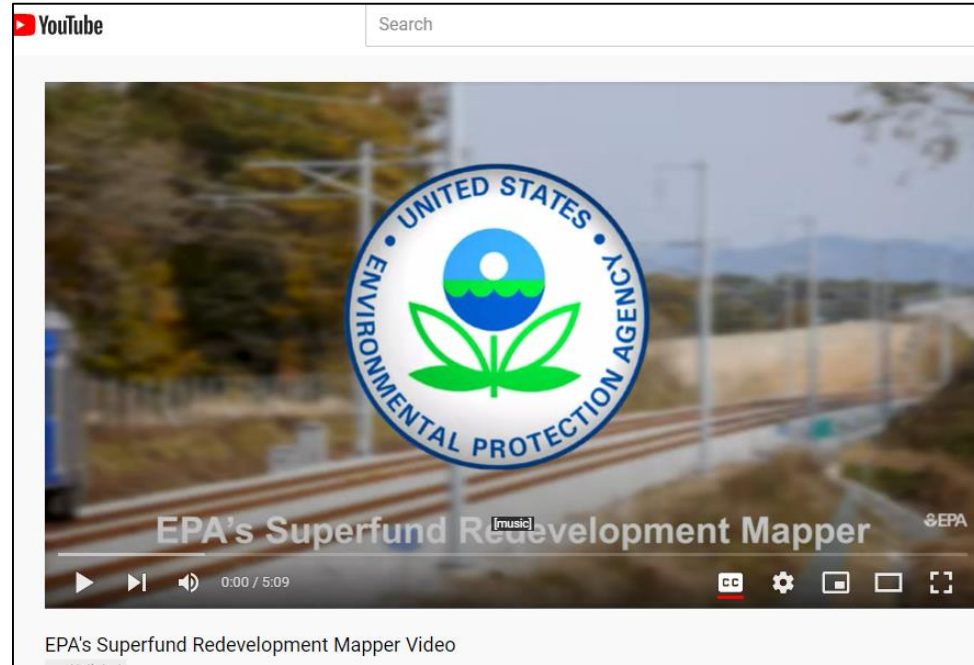
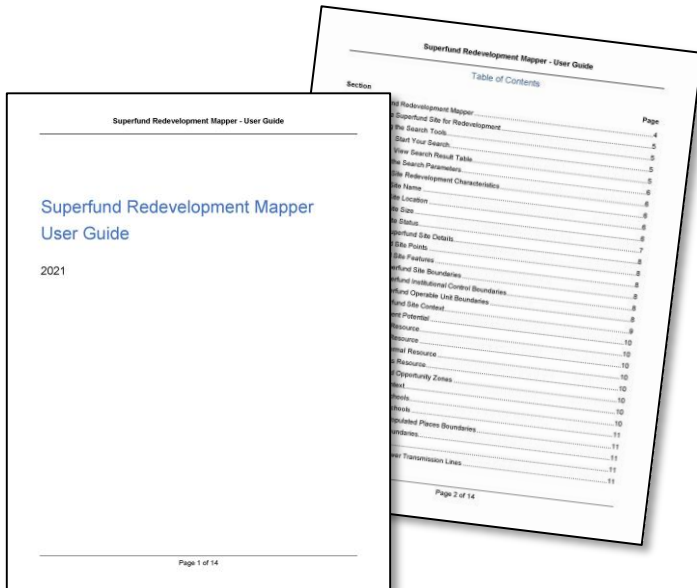
Superfund Site Boundaries in this map delineate the estimated geographic location of contamination. Known boundaries of contamination can be expected to change over time. This is a working data layer and some sites will not yet have a defined boundary.

This map is designed to provide information for stakeholders need to make timely business decisions and to give support to overcome barriers to reuse. It includes site information, community context, and links to relevant resources.

## How to Search and Filter Superfund Sites

# Additional Resources

1. User Guide
2. Explainer Video
3. Fact Sheet



# Contact Information

**Alison Frost**

Skeo Solutions

(307) 202-9482

[afrost@skeo.com](mailto:afrost@skeo.com)

**Bianca Boggs**

Skeo Solutions

(240) 673-1537

[bqboggs@skeo.com](mailto:bqboggs@skeo.com)

**Questions? Suggestions?  
or Need Further Help?**

[SRPtools@epa.gov](mailto:SRPtools@epa.gov)

# Superfund Redevelopment Resources & Contacts

Casey Luckett Snyder, EPA Superfund Redevelopment Program/EPA Region 6

# Superfund Redevelopment Resources & Tools

- Regional Seed Resources & Reuse Planning
- EPA Guidance, Handbooks & Fact Sheets
- Prospective Purchaser Inquiry (PPI) calls
- Comfort Letters
- EPA Agreements



# Superfund Redevelopment Coordinators by Region

Region	Name	Phone	Email
1	Joe LeMay	617-918-1323	<a href="mailto:lemay.joe@epa.gov">lemay.joe@epa.gov</a>
2	Jaclyn Kondrk	212-637-4317	<a href="mailto:kondrk.jaclyn@epa.gov">kondrk.jaclyn@epa.gov</a>
3	Chris Thomas	215-814-5555	<a href="mailto:thomas.christopher@epa.gov">thomas.christopher@epa.gov</a>
4	Shelby Johnston Scott Miller Joydeb Majumder	404-562-8287 404-562-9120 404-562-9121	<a href="mailto:johnston.shelby@epa.gov">johnston.shelby@epa.gov</a> <a href="mailto:miller.scott@epa.gov">miller.scott@epa.gov</a> <a href="mailto:majumder.joydeb@epa.gov">majumder.joydeb@epa.gov</a>
5	Thomas Bloom	312-886-1967	<a href="mailto:bloom.thomas@epa.gov">bloom.thomas@epa.gov</a>
6	Casey Luckett Snyder	214-665-7393	<a href="mailto:luckett.casey@epa.gov">luckett.casey@epa.gov</a>
7	Tonya Howell	913-551-7589	<a href="mailto:howell.tonya@epa.gov">howell.tonya@epa.gov</a>
8	Fran Costanzi	303-312-6571	<a href="mailto:costanzi.frances@epa.gov">costanzi.frances@epa.gov</a>
9	Grace Ma	415-947-4212	<a href="mailto:ma.grace@epa.gov">ma.grace@epa.gov</a>
10	Dustan Bott Piper Peterson	206-553-5502 206-553-4951	<a href="mailto:bott.dustan@epa.gov">bott.dustan@epa.gov</a> <a href="mailto:peterston.piper@epa.gov">peterston.piper@epa.gov</a>

# For More Information

## Casey Luckett Snyder

EPA Superfund Redevelopment  
Program/EPA Region 6  
(214) 665-7393

[luckett.casey@epa.gov](mailto:luckett.casey@epa.gov)

## Dion Novak

EPA Superfund Redevelopment  
Program/EPA Region 5  
(312) 886-4737

[novak.dion@epa.gov](mailto:novak.dion@epa.gov)

## Chelsea Sebetich

OSRTI Community Involvement  
& Program Initiatives Branch  
(202) 566-1151

[sebetich.chelsea@epa.gov](mailto:sebetich.chelsea@epa.gov)



Visit the Superfund Redevelopment Program Website at:  
[www.epa.gov/superfund-redevelopment](http://www.epa.gov/superfund-redevelopment)

# Questions?



Chevron Questa Mine Superfund site  
in Questa, New Mexico

**Would you like to receive more information about Superfund Redevelopment webinars, trainings, conferences, tools and other updates?**

**Please submit your email and affiliation into the Q&A box to be added to the Superfund Redevelopment distribution list!**