



# Management and Interpretation of Data Under a Triad Approach

OSWER, OSRTI, TIFSD  
Technology Information & Integration Branch

Jean Balent, [balent.jean@epa.gov](mailto:balent.jean@epa.gov), 703.603.9924  
Stephen Dymont, [dymont.stephen@epa.gov](mailto:dymont.stephen@epa.gov), 703.603.9903  
Michael Adam, [adam.michael@epa.gov](mailto:adam.michael@epa.gov), 703.603.9915




1



*Brownfields and Land Revitalization Technology Support Center*  
***<http://www.brownfieldstsc.org>***

# Housekeeping

---

- Please mute your phone lines
  - press \*6 to mute #6 to unmute your lines at anytime
- Do NOT put this call on hold
- We will ask for your feedback today. You do not need to wait for Q&A breaks to ask questions or provide comments
- To report technical problems, please use the ? Icon at the top of your screen 
- You can move forward/backward in the slides by using the arrow buttons  

2

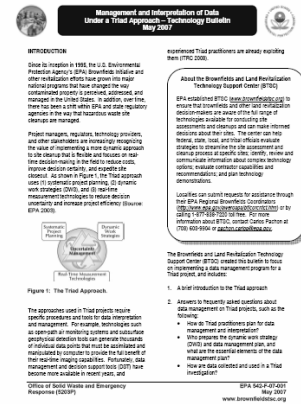


*Brownfields and Land Revitalization Technology Support Center*  
***<http://www.brownfieldstsc.org>***

# Brownfields Technology Support Center (BTSC)

- Basis for this presentation is on a BTSC Publication:
  - Management and Interpretation of Data Under a Triad Approach – Technology Bulletin (EPA 542-F-07-001)

<http://www.cluin.org/download/char/epa542f07001.pdf>



3



**Brownfields and Land Revitalization Technology Support Center**  
**<http://www.brownfieldstsc.org>**

# Overview of Seminar

---

## 1. Introduction to the Triad approach

## 2. Answers to frequently asked questions:

- How do Triad practitioners plan for data management and interpretation?
- Who prepares the dynamic work strategy (DWS) and data management plan, and what are the essential elements of the data management plan?
- How are data collected and used in a Triad investigation?
- What types of tools are used to manage, interpret, and communicate data?
- How do Triad practitioners balance the need for data review with the need for rapid data turnaround?

## 3. Three examples of data management

- Milltown Redevelopment Site, Milltown, New Jersey
- Metal Etching Site, Freeport, New York
- Underground Storage Tank (UST) Sites, South Dakota

## 4. Sources of additional information on a data management program in support of a Triad project

## 5. Q/A with instructors

**4**



*Brownfields and Land Revitalization Technology Support Center*  
***<http://www.brownfieldstsc.org>***

---

# Introduction to the Triad Approach



*Brownfields and Land Revitalization Technology Support Center*  
*<http://www.brownfieldstsc.org>*

# Introduction to Triad Approach

- **Triad is a three-pronged approach for improving decision-making and streamlining environmental cleanup projects.**

✓Draws on advancing science, technology, and practitioner experience to develop strategies for making site work **more defensible**, resource-effective, and **responsive to stakeholder concerns**.

✓Data management is an essential cross-cutting component to the three elements of the Triad approach



**6**



*Brownfields and Land Revitalization Technology Support Center*  
<http://www.brownfieldstsc.org>

# Introduction to Triad Approach

---

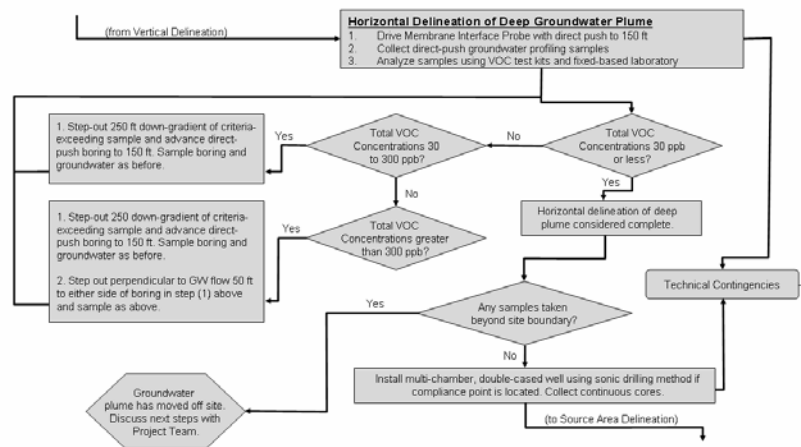
- **Systematic Project Planning**
  - provides the overarching framework for project planning, contracting, and stakeholder communication
- **Dynamic Work Strategies**
  - dynamic (flexible) planning documents that includes is a defined *decision logic* that members of the field team can follow as they collect and evaluate data.
- **Real-time Measurement Technologies**
  - allow data to be collected or analyzed at a much greater density or rate than is typically obtained through a conventional methods
  - drives the Dynamic Work Strategy



*Brownfields and Land Revitalization Technology Support Center*  
***<http://www.brownfieldstsc.org>***

RTM drives the dynamic work strategy

# Decision Logic Diagram



8



**Brownfields and Land Revitalization Technology Support Center**  
<http://www.brownfieldstsc.org>

Different levels of Decision Logic Diagrams

Programmatic

High-level site decisions/strategies

Field Implementation

Technology

Sample Design

Performance Metrics for Tools

Logistics (if DP cannot go below X depth, what do we do now)



# Introduction to Triad Approach

---

- The primary tool that guides a Triad project is the ***conceptual site model (CSM)***.
  - a **planning tool** that **organizes what is known about a site** and helps the project team identify what more must be known to make defensible project decisions.
  - **unifies existing data** into a concise description of a site's physical setting, contaminant release, transport mechanisms, and exposure points that describe the problem.
  - a **working hypothesis of site conditions** that ***will be refined and improved over the course of the project***

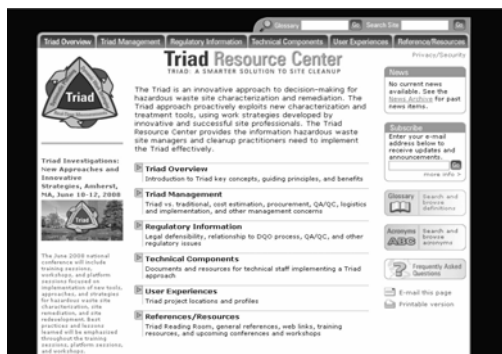
2



Brownfields and Land Revitalization Technology Support Center  
<http://www.brownfieldstsc.org>

# More Information

- Triad Resource Center  
[www.triadcentral.org](http://www.triadcentral.org)



Visitors will find:

- **30 detailed profiles** related to the Triad approach as applied to various sites across the US
- **15 items in the Triad Reading Room**
- A complete **glossary** of important terms and acronyms
- And much more!

**10**



*Brownfields and Land Revitalization Technology Support Center*  
<http://www.brownfieldstsc.org>

---

# Frequently Asked Questions

11



*Brownfields and Land Revitalization Technology Support Center*  
***<http://www.brownfieldstsc.org>***

## FAQ 1: How do Triad practitioners plan for data management & interpretation?

- Triad investigations are **dynamic!**
- **Dynamic Work Strategy (DWS)**
  - is developed before mobilization and guides the investigation
  - may identify # of initial sampling locations, subsequent locations based on predetermined criteria, driven by collection and interpretation of real-time data
  - must have a parallel data management strategy that allows real-time data interpretation and decision-making by project stakeholders
- Planning documents must include a **data management plan**
  - detailed discussion of data management procedures,
  - equipment (software and hardware),
  - lines of communication,
  - reporting guidelines,
  - time frames

12



*Brownfields and Land Revitalization Technology Support Center*  
***<http://www.brownfieldstsc.org>***

Carefully planning allows you to adequately assess costs & resource needs associated with data management

## **FAQ 2: Who prepares the dynamic work strategy (DWS) & data management plan?**

- Preparation of the DWS and data management plan is usually the **responsibility of the core technical team**
  - should not be prepared until stakeholder input and concerns are obtained during systematic planning meetings
- A successful data management strategy depends on input from those **who will be generating and using the data**:
  - vendors/contractors,
  - geoscientists,
  - chemists,
  - risk assessors and
  - other technical specialists



**13**



*Brownfields and Land Revitalization Technology Support Center*  
***<http://www.brownfieldstsc.org>***

Make sure the regulator is comfortable with the information that you are collecting as well as its format and decisions that will be made with this information

Timing/segway to sampling approach

## FAQ 2: What are the essential elements of the data management plan?

- Origin of data streams
  - Formats, tools to collect
- Data pathways and communication
  - Assign responsibility for all aspects of data management
- Level and timing of quality assurance and quality control (QA/QC)
  - May need to develop QC protocols customized to site-specific needs
- Data analyses (visualization and statistical)
  - Have clear understanding of tools that will be used to process data and help make decisions

14



*Brownfields and Land Revitalization Technology Support Center*  
<http://www.brownfieldstsc.org>

### **Origin of data streams**

Data may be generated by a variety of field or laboratory instruments  
results may be documented using various manual and electronic formats

### **Data pathways and communication**

key participants for decision-making may be remote from the site during significant periods of time

provide for the rapid turnaround and distribution of results and data analysis to stakeholders  
assign responsibility for all aspects of the management and security of the data throughout the project life cycle

### **Level and timing of quality assurance and quality control (QA/QC)**

QA/QC components that are either unique or significantly different in scope and nature from conventional program

fewer QC requirements are typically pre-defined for real-time measurement systems that are deployed in the field

offers the opportunity to develop QC protocols that are customized to the site-specific needs and performance goals of a project

### **Data analyses (visualization and statistical)**

have a clear idea of the statistical analyses, geostatistical programs, and visualization software

Plan for data evaluation up front so data are formatted appropriately for the analytical tool

Be sure analytical suite is appropriate for the project's objective and the site's characteristics.

## FAQ 2: What are the essential elements of the data management plan?

- Data stream integration
  - Be careful of mixing data sets
- Correspondence between data and the decisions they support
  - Use table or matrix to define linkage between data and decisions
- Data archive and repository
  - Approach to create and maintain records
  - Use appropriate methods to collect correct documentation

15



*Brownfields and Land Revitalization Technology Support Center*  
<http://www.brownfieldstsc.org>

### **Data stream integration**

Care is required if databases are used to store collaborative data sets. Do not mix data sets together because they often will **not** be statistically comparable.

Clear, consistent data identification protocols should be used to minimize time-consuming errors in identifying and managing data.

### **Correspondence between data and the decisions they support**

understand how the data will be used to support different decisions as the project progresses.

Use table or matrix to define linkage between data and decisions

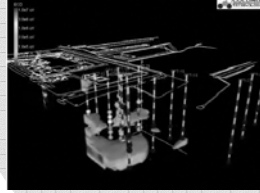
### **Data archive and repository**

be aware of the records that must be included in the project archives as well as mechanisms to collect them

### FAQ 3: How are data collected and used in a Triad investigation?

---

- Drive decision-making in the field
  - ensure that the data are readily available as the investigation is being conducted (internet access may be critical)
  - Real-time methods may yield immediate graphical results



16



*Brownfields and Land Revitalization Technology Support Center*  
<http://www.brownfieldstsc.org>

Images courtesy Columbia Technologies Website

Columbia can upload individual MIP points to someone back at office, who updates the 3d rendering



## **FAQ 4: What types of tools are used to manage, interpret, & communicate data?**

**Decision Support Tools (DSTs)** = interactive software tools used to answer questions, solve problems, and support or refute conclusions.

- Help with data acquisition, spatial data management, modeling, and cost estimation
- bring data management & interpretation capabilities as close to collection activities & decision-making as possible

- **Resource: DST matrix**

(<http://www.frtr.gov/decisionsupport/>)

- assist Triad practitioners in selecting a DST to meet project objectives
- detailed information for 25 publicly available DSTs

**17**



*Brownfields and Land Revitalization Technology Support Center*  
**<http://www.brownfieldstsc.org>**

DST covers publically available – FREE applications

All fed \$ tools

## **FAQ 4: What types of tools are used to manage, interpret, & communicate data?**

- **Example: Scribe**

**([http://www.ertsupport.org/scribe\\_home.htm](http://www.ertsupport.org/scribe_home.htm))**

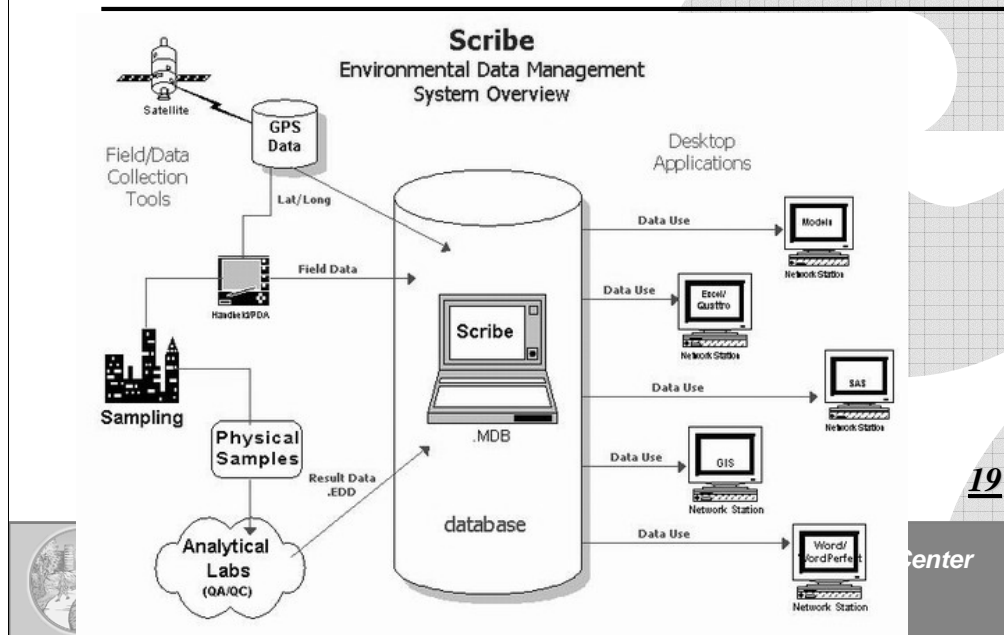
- Free software tool developed by the USEPA's Environmental Response Team (ERT) to assist in the process of **managing environmental data**
- **Captures** sampling, observational, and monitoring field **data** (Soil Sampling, Water Sampling, Air Sampling and Biota Sampling)
- Can **import electronic data** including Analytical Lab Result data (EDD) and Sampling Location data such as GPS.
- Scribe supports handheld extensions, *Scriblets*, to capture and import sampling and monitoring **data collected on handheld PDAs**
- Scribe.NET provides a method of **storing and sharing Scribe projects** among stakeholders

**18**



*Brownfields and Land Revitalization Technology Support Center*  
**<http://www.brownfieldstsc.org>**

# Scribe Screenshot



19

Center

# Scribe Screenshot

Microsoft Excel - Demo Project Soil Sample Results.csv

Samp_No	Location	Matrix_ID	Analysis	Analyte	Result	Result_Un	Result_Ou	Lab_Resul	MDL	MDL_Unit	Date_Anal	EventID	Lab_Name	Lab_S...	
1	SS-0001	R1	Soil	SW6010	ALUMINUM	6000	mg/Kg			19	mg/Kg	6/3/2004	Soil Samp	STL	21565
3	SS-0001	R1	Soil	SW6010	ANTIMONY	0.86	mg/Kg	B	B	1.9	mg/Kg	6/3/2004	Soil Samp	STL	21565
4	SS-0001	R1	Soil	SW6010	ARSENIC	9.4	mg/Kg			0.94	mg/Kg	6/3/2004	Soil Samp	STL	21565
5	SS-0001	R1	Soil	SW6010	BARIIUM	120	mg/Kg			0.94	mg/Kg	6/3/2004	Soil Samp	STL	21565
6	SS-0001	R1	Soil	SW6010	BERYLLIUM	0.66	mg/Kg			0.78	mg/Kg	6/3/2004	Soil Samp	STL	21565

Ready

Scribe

Import Data Wizard

Data To Be Imported

Lab Results # Records: 110

Samp_No	Result_Un	Analyte	Analysis	Result_Quallier
SS-0001	mg/Kg	ALUMINUM	SW6010	
SS-0001	mg/Kg	ANTIMONY	SW6010	B
SS-0001	mg/Kg	ARSENIC	SW6010	
SS-0001	mg/Kg	BARIIUM	SW6010	
SS-0001	mg/Kg	BERYLLIUM	SW6010	
SS-0001	mg/Kg	CADMIUM	SW6010	
SS-0001	mg/Kg	CALCIUM	SW6010	
SS-0001	mg/Kg	CHROMIUM	SW6010	
SS-0001	mg/Kg	COBALT	SW6010	
SS-0001	mg/Kg	COPPER	SW6010	
SS-0001	mg/Kg	IRON	SW6010	H

File Name: C:\Pro\locbel\project\Scribe Demo Project MDB 10/26/2006 3:14 PM

20  
Center

## **FAQ 4: What types of tools are used to manage, interpret, & communicate data?**

- Example: Spatial Analysis and Decision Assistance (SADA)  
(<http://www.tiem.utk.edu/~sada> )
  - Free software that incorporates tools from environmental assessment fields into an effective problem solving environment
  - Integrated modules for visualization, geospatial analysis, statistical analysis, human health risk assessment, ecological risk assessment, cost/benefit analysis, sampling design, and decision analysis.

**21**



*Brownfields and Land Revitalization Technology Support Center*  
**<http://www.brownfieldstsc.org>**

# SADA Screenshots

**Set Human Health Contaminant Toxicity**

Substance: Inorganic

General  
Inorganic  
CAS # = 7440382  
Volatil = NO  
Bolt

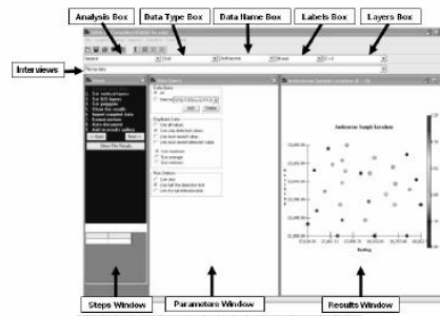
Noncarcinogenic Toxicity

	Water	Soil	Diet	Unit
Oral Reference Dose	0.0003	0.0003	0.0003	(mg/kg-d)
Subchronic Oral Reference Dose	0.005	0.005	0.005	(mg/kg-d)
Inhalation Reference Concentration				(mg/m <sup>3</sup> )
Subchronic Inhalation Reference Concentration				(mg/m <sup>3</sup> )
Dermal Reference Dose	0.000123	0.000123		(mg/kg-d)
Subchronic Dermal Reference Dose	0.0005	0.0005		(mg/kg-d)

Carcinogenic Toxicity

	Water	Soil	Diet	Unit
Oral Slope Factor	1.5	1.5	1.5	1/(mg/kg)
Inhalation Unit Risk/Slope Factor	75.1	4.3		1/(mg/m <sup>3</sup> )
Dermal Slope Factor	3.66	3.66		1/(mg/kg)
External Slope Factor				risk/hr per

Save Changes Help Exit

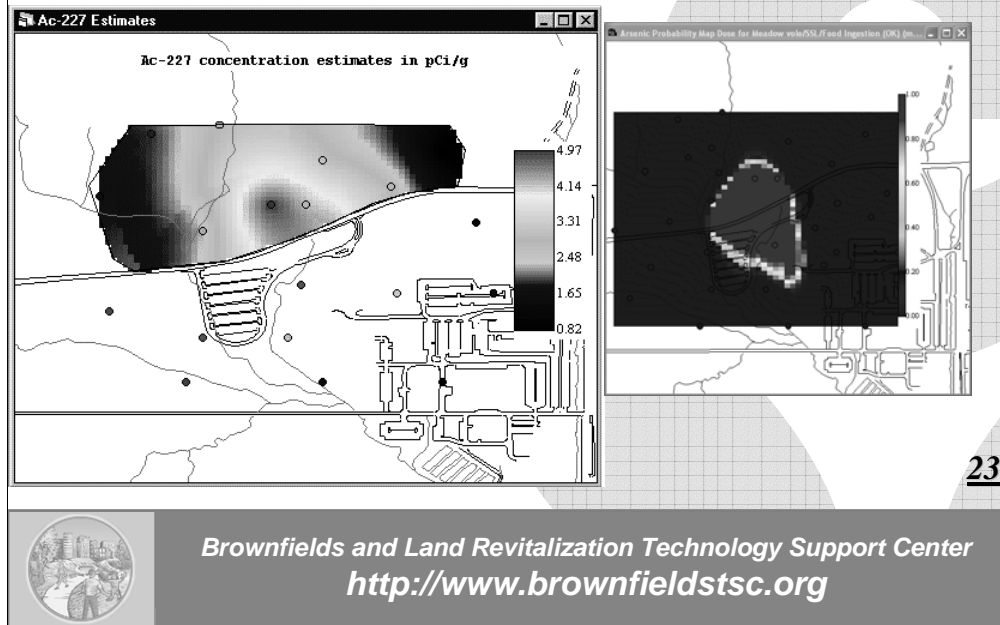


22



**Brownfields and Land Revitalization Technology Support Center**  
<http://www.brownfieldstsc.org>

# SADA Screenshots



These are tools, need to watch statistical approaches used by these apps

## **FAQ 5: How to balance the need for data review with need for rapid data turnaround?**

- Triad practitioners use many techniques to maintain data quality while expediting processing, reviewing, and reporting field data
- Before designing sampling program around a real-time sampling/analysis technique, test it during a ***demonstration of methods applicability (DMA)***

24



*Brownfields and Land Revitalization Technology Support Center*  
<http://www.brownfieldstsc.org>



## **FAQ 5: How to balance the need for data review with need for rapid data turnaround?**

- DMA
  - **initial site-specific performance evaluation** for a method, a series of related methods, or a data collection tool
  - consists of **using the real-time technology on a limited suite of samples** while sending **paired samples to an off-site laboratory** for standard laboratory analysis for the same analytes or parameters
  - results are evaluated using statistical methods such as regression analysis

25



*Brownfields and Land Revitalization Technology Support Center*  
***<http://www.brownfieldstsc.org>***

## **FAQ 5: How to balance the need for data review with need for rapid data turnaround?**

- DMA can
  - **evaluate the adequacy** of the real-time method for achieving the project's data quality objectives (DQO)s
  - **establish appropriate sampling and analysis procedures**, and
  - **develop action levels** for the real-time methods
- By conducting the DMA before the field sampling program, many problems and data “bottlenecks” that may arise can be anticipated and corrective measures can be established
- Make full use of collaborative data sets!

**26**



*Brownfields and Land Revitalization Technology Support Center*  
**<http://www.brownfieldstsc.org>**

### DMA can

evaluate the adequacy of the real-time method for achieving the project's data quality objectives (DQO)s

establish appropriate sampling and analysis procedures, and  
develop action levels for the real-time methods.

By conducting the DMA before the field sampling program, many problems and data “bottlenecks” that may arise during the sampling program can be anticipated and corrective measures can be established proactively.

### Making full use of collaborative data sets

integrate data obtained rapidly using real-time techniques with analytical data from an off-site laboratory.

Real-time data can be used to support most aspects of the DWS, as long as the adequacy of the real-time techniques is established ahead of time during the DMA

Data review requirements should be documented in the quality assurance project plan (QAPP)

# Examples of Data Management

---

1. Milltown Redevelopment Site, Milltown, New Jersey
2. Metal Etching Site, Freeport, New York
3. Underground Storage Tank (UST) Sites, South Dakota

Other profiles available at

**<http://triadcentral.org/user/index.cfm>**

**27**



*Brownfields and Land Revitalization Technology Support Center*  
***<http://www.brownfieldstsc.org>***

---

# Examples of Data Management

28



*Brownfields and Land Revitalization Technology Support Center*  
*<http://www.brownfieldstsc.org>*

# Milltown Site, NJ

- 22-acre Brownfields site in downtown Milltown, NJ
- 50 % + site is warehouses and industrial buildings
- Industrial use began with a rubber manufacturing plant in the late 1800s
- Milltown Redevelopment Authority and Middlesex County Improvement Agency entered into an agreement with a developer to improve the parcel for mixed uses
- Principal contaminants of concern (COC) included VOCs, PAHs, PCBs



29



*Brownfields and Land Revitalization Technology Support Center*  
**<http://www.brownfieldstsc.org>**

more than 300 age-restricted residential units, commercial space, and open space along Mill Pond, the main waterway through central Milltown.

# Milltown, NJ

---

Project goals:

- (1) develop and revise a CSM** of site geology, hydrology, and contaminant fate and transport by collecting soil, sediment, and ground water samples and geologic logs on a regular grid, and
- (2) delineate potential areas of concern (AOC)** on a closer grid spacing of adaptive sampling locations.

30

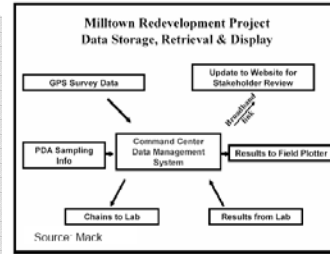


*Brownfields and Land Revitalization Technology Support Center*  
***<http://www.brownfieldstsc.org>***

Alias "Ford Ave Redevelopment Project"

# Milltown Site, NJ

- Identified several concerns at systematic planning meetings
  - management of the large volume of data that would be generated by field analytical methods over a relatively short, 2-month time frame
- Identified Scribe and Scriplets as DSTs for data management



31



*Brownfields and Land Revitalization Technology Support Center*  
<http://www.brownfieldstsc.org>

## Milltown Site NJ

---

- Scribe was used as the central data management software, with Scriblets used on PDAs to feed field data to Scribe.
  - **Allowed the project team to make real-time decisions and update CSM in real-time during the sampling mobilization**
- After each round, the data were imported to Scribe, reviewed, queried, and exported to AutoCAD (visualization software)
- Decision logic diagrams provided general rules to support adaptive sampling
  - **Ground water plume delineation was expedited**

32



*Brownfields and Land Revitalization Technology Support Center*  
***<http://www.brownfieldstsc.org>***



## Milltown Site, NJ

---

- Project-specific Web site was set up on the EPA ERT's Web server
  - [http://www.epaosc.org/site\\_profile.asp?site\\_id=MRP](http://www.epaosc.org/site_profile.asp?site_id=MRP)
- Maps, progress reports, and meeting information were posted to the Web site daily
- All stakeholders (on-site and remote) reviewed tables and maps summarizing team's updated understanding of the distribution of COCs at the end of each day and then provide input for the next day's sampling.

33



*Brownfields and Land Revitalization Technology Support Center*  
***<http://www.brownfieldstsc.org>***

## Milltown Site, NJ

---

- The field team was able to **sample more than 400 locations** in approximately **5 weeks**.
- Collected more than 130+ ground water samples and 600+ soil samples
- Generates 30,000 analytical results
  - All loaded into the database and underwent QC review in a short time
- Triad DWS provided a flexible means to adapt the sampling strategy
  - **Discovery and characterization of unknown vat while in field**

See complete Triad Project Profile: <http://www.triadcentral.org/user>

**34**



*Brownfields and Land Revitalization Technology Support Center*  
<http://www.brownfieldstsc.org>

# Metal Etching Site, NY

---

- 2 acre New York State Superfund site in Freeport, Nassau County, NY used for commercial boat storage, sales, and maintenance
- 1966 -1999, operational facility, print/etch using anodization, chromate conversion, and chrome or nickel plating processes
- disposal of sanitary and industrial wastes through sanitary sewer lines
- AOCs: former plating area, chemical and waste storage areas, wastewater treatment operations, failed sewer lines and connections, waste storage areas, and historical spill areas
- COCs included chromium, cadmium, nickel, and chlorinated hydrocarbons (PCE and TCE)

35



*Brownfields and Land Revitalization Technology Support Center*  
***<http://www.brownfieldstsc.org>***

Mike

## Metal Etching Site, NY

---

- NYSDEC conducted an RI of the site to identify and delineate contamination in surface and subsurface soil, sediment, soil gas; source areas; ground water contamination; and impacts to surface water
- Project Goal: **use Triad to complete the RI during one mobilization effort**

36



*Brownfields and Land Revitalization Technology Support Center*  
*<http://www.brownfieldstsc.org>*

Mike

## Metal Etching Site, NY

---

- Surface soil, subsurface soil, and ground water samples collected on a grid spacing of 70 feet
- DWS called for **adaptive samples** to be collected at two new locations offset 10 feet from areas where contaminants were **detected above cleanup goals**
- Nearby laboratory analyzed samples using modified EPA SW-846 methods, which required less QA/QC
- Samples were delivered to the laboratory by noon, **results were returned to the field team by 11:00 a.m. the next day**<sup>37</sup>



*Brownfields and Land Revitalization Technology Support Center*  
***<http://www.brownfieldstsc.org>***

Mike

## Metal Etching Site, NY

---

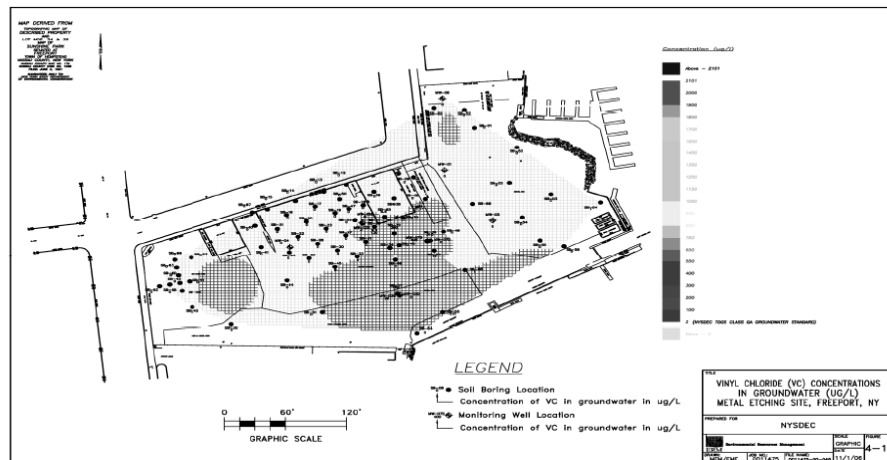
- Relational database was constructed using geographical information system (GIS)
  - chemical data, water levels, and survey data
  - Tables of analytical results
  - Maps of contaminant distribution and ground water flow
- Field personnel obtained EDDs from the lab daily
- Updated contaminant distribution maps were quickly prepared and the field program was redirected as indicated by the DWS
- Data were shared with the stakeholders through e-mail messages

38



*Brownfields and Land Revitalization Technology Support Center*  
***<http://www.brownfieldstsc.org>***

# Metal Etching Site, NY



39



Brownfields and Land Revitalization Technology Support Center  
<http://www.brownfieldstsc.org>

## Metal Etching Site, NY

---

- Collecting data in real time gave the most complete “snapshot” of contaminant distribution that time and budget would allow
- Confirmation sampling indicated real-time GW data did not meet all of the DQOs for making decisions
  - ground water monitoring wells were installed and samples collected for analysis using EPA SW-846 methods

40



*Brownfields and Land Revitalization Technology Support Center*  
***<http://www.brownfieldstsc.org>***



## Metal Etching Site, NY

---

- Daily analysis permitted early elimination of hexavalent chromium as a COC
  - Resulted in **significant cost savings**
- Real-time analysis coupled with the GIS software **permitted stakeholder input** in redirecting sample collection to more accurately define the affected areas

41



*Brownfields and Land Revitalization Technology Support Center*  
<http://www.brownfieldstsc.org>

## UST Sites, SD

- Five sites including three active gas stations, one closed gas station, and a railroad fueling site.
- Three sites had underground storage tanks (USTs) and associated piping removed
- The time since the petroleum releases had been first discovered on the sites ranged from 1 to 14 years.
- Several of the sites had remained in the investigation phase for more than 10 years
- 3 sites previously assessed at costs ranging from \$35,000 to \$103,000 with little to reduction in decision uncertainty
- All sites considered “legacy” sites because, although the petroleum releases had been known about for years, none were moving toward regulatory closure.
- COCs included: BTEX, Diesel fuel, EDB, Gasoline, MTBE, Naphthalene, TPA, TPH

42



*Brownfields and Land Revitalization Technology Support Center*  
<http://www.brownfieldstsc.org>

### **Contaminant(s) of Concern**

Benzene-toluene-ethylbenzene-xylene (BTEX)

Diesel fuel

Ethylene dibromide (EDB)

Gasoline

Methyl tert butyl ether (MTBE)

Naphthalene

Terephthalic acid (TPA)

Total petroleum hydrocarbons (TPH)

# UST Sites, SD

---

**Project Goal: 1) Determine if the Triad approach could be used to reduce decision uncertainties associated with petroleum release sites on a real-time basis.**

**2) Reduce time when the samples were sent to an off-site lab to when stakeholders are notified additional information is needed from 12-18 weeks to a few days**



**43**



*Brownfields and Land Revitalization Technology Support Center*  
<http://www.brownfieldstsc.org>

## UST Sites, SD

---

- Existing assessment data and 3-d models made available to all stakeholders at the planning meeting
- Stakeholders established objectives, ground rules, and generic protocol for use at each site
- MIP used as the primary investigation tool
- Logs of sensor response were printed immediately after the MIP profile was conducted.
- MIP borehole location was established on the site coordinate system within minutes after it was completed using GPS survey equipment

44

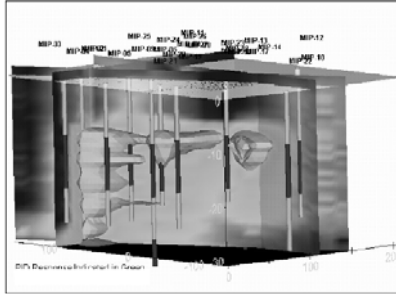


*Brownfields and Land Revitalization Technology Support Center*  
**<http://www.brownfieldstsc.org>**

(such as the required participation of all project team members at the site every day)

# UST Sites, SD

- Team uploaded the MIP results and the GPS survey data to the vendor's proprietary data processing and contouring program twice daily to update the existing 3-d model
- On-site, 3-d renderings allowed team to identify data gaps immediately and fill them before demobilizing



- Each morning, results from the previous day were evaluated and compared to project objectives.
- Results uploaded to a project Web site daily.
- Allowed project team members who could not be present in the field to fully participate in the ongoing evaluation of data.

45



*Brownfields and Land Revitalization Technology Support Center*  
<http://www.brownfieldstsc.org>

## UST Sites, SD

---

- In total 133 borings were advanced, generating almost **350,000 MIP data points**
  - Only about 1,400 data points would have been generated with conventional drilling methods
- Greater data density not only reduced the potential for data gaps, but **three previously unknown USTs were found**
- Stakeholders met after the assessment to select the next course of action
  - Additional corrective action is planned for two sites, consisting of monitored natural attenuation
  - Another site is expected to be eligible for a no further action (NFA) determination

**46**



*Brownfields and Land Revitalization Technology Support Center*  
***<http://www.brownfieldstsc.org>***

## UST Sites, SD

---

- Costs of the Triad investigations at the two sites that had not been previously investigated were \$25,000 and \$32,000 (**much less than previous work**)
- Costs of the Triad investigation hard to compare with the conventional investigations because they built on knowledge gained from the conventional assessments
- Conventional assessments left the investigators with uncertainty regarding the CSM, while the **Triad assessments tended to remove those uncertainties**

See complete Triad Project Profile: <http://www.triadcentral.org/user>

47



*Brownfields and Land Revitalization Technology Support Center*  
<http://www.brownfieldstsc.org>

# Summary

---

- When properly applied, the Triad approach can lead to significant cost and time savings as well as improved confidence in site clean-up decisions.
- Data management is critical to any site, particularly Triad projects.
- Data management feeds the DWS.
- In turn this drives the development and refinement of the CSM and ultimately aids in decision-making at the site.

48



*Brownfields and Land Revitalization Technology Support Center*  
***<http://www.brownfieldstsc.org>***

Triad sites generate huge amounts of data

Use different tools that need to communicate with each other



---

## Sources of Additional Information

49



*Brownfields and Land Revitalization Technology Support Center*  
***<http://www.brownfieldstsc.org>***

## Sources of Additional Information

---

- BTSC Primer Series document “Using the Triad Approach to Streamline Brownfields Site Assessment and Cleanup”
  - <http://www.brownfieldstsc.org>
- Project profiles, case studies, and other information on applying the Triad approach
  - <http://www.triadcentral.org>
- Guide to developing a Dynamic Work Strategy
  - [http://www.triadcentral.org/tech/dsp\\_sub.cfm?id=23](http://www.triadcentral.org/tech/dsp_sub.cfm?id=23)
- FRTR Decision Support Tools Matrix
  - <http://www.frtr.gov/decisionsupport/index.htm>
- Technical Bulletin on DMAs & the Triad approach
  - [http://www.triadcentral.org/tech/dsp\\_sub.cfm?id=4](http://www.triadcentral.org/tech/dsp_sub.cfm?id=4)
- How PBMS may be integrated with the Triad systematic planning process
  - <http://www.clu-in.org/search/t.focus/id/195/>

**50**



*Brownfields and Land Revitalization Technology Support Center*  
**<http://www.brownfieldstsc.org>**

---

## Questions & Answers

- Please feel free to ask the instructors and questions
  - press \*6 to mute #6 to unmute your lines at anytime
  - Submit questions online using the ? button
  - You may also email them to the speakers for later response

51



*Brownfields and Land Revitalization Technology Support Center*  
***<http://www.brownfieldstsc.org>***

# Triad Conference

International Conference and Training  
**Triad Investigations**  
New Approaches and Innovative Strategies

**Registration is  
still open!**

June 10, 11, and 12, 2008  
University of Massachusetts Amherst

**<http://www.umass.edu/tei/conferences/triad.html>**

#### **Conference Highlights**

- Full day of Triad **basic and advanced training tracks** to kick off the three-day conference
- 54 **conference platform presentations** on leading-edge technologies and field practices
- Specialized evening workshops on Triad tools and techniques
- Posters featuring new and emerging field procedures, tools, techniques, and equipment
- Interactive "**Tool Room**" for hands on experience with the latest software and tools
- Interactive **vendor demonstrations** showcasing the latest field equipment and services

**52**



*Brownfields and Land Revitalization Technology Support Center*  
***<http://www.brownfieldstsc.org>***

---

Links to additional resources

Feedback form

53



*Brownfields and Land Revitalization Technology Support Center*  
*<http://www.brownfieldstsc.org>*